

**ACTA1 / ASMA Antibody (clone 3B3)**  
**Mouse Monoclonal Antibody**  
**Catalog # ALS14861****Specification**

---

**ACTA1 / ASMA Antibody (clone 3B3) - Product Information**

Application	IHC
Primary Accession	<a href="#">P68133</a>
Reactivity	Human, Rat, Rabbit, Pig, Goat
Host	Mouse
Clonality	Monoclonal
Calculated MW	42kDa KDa

**ACTA1 / ASMA Antibody (clone 3B3) - Additional Information****Gene ID 58****Other Names**

Actin, alpha skeletal muscle, Alpha-actin-1, ACTA1, ACTA

**Target/Specificity**

Highly specific for alpha- skeletal actin, and does not cross react with other actin isoforms. The epitope recognized by 3B3 is highly conserved. Therefore the antibody cross-reacts with many other species.

**Reconstitution & Storage**

Long term: -20°C; Short term: +4°C. Avoid repeat freeze-thaw cycles.

**Precautions**

ACTA1 / ASMA Antibody (clone 3B3) is for research use only and not for use in diagnostic or therapeutic procedures.

**ACTA1 / ASMA Antibody (clone 3B3) - Protein Information****Name** ACTA1**Synonyms** ACTA**Function**

Actins are highly conserved proteins that are involved in various types of cell motility and are ubiquitously expressed in all eukaryotic cells.

**Cellular Location**

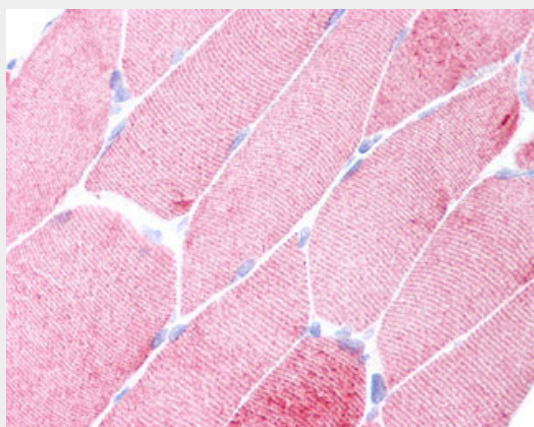
Cytoplasm, cytoskeleton.

**ACTA1 / ASMA Antibody (clone 3B3) - Protocols**

Provided below are standard protocols that you may find useful for product applications.

- [Western Blot](#)
- [Blocking Peptides](#)
- [Dot Blot](#)
- [Immunohistochemistry](#)
- [Immunofluorescence](#)
- [Immunoprecipitation](#)
- [Flow Cytometry](#)
- [Cell Culture](#)

#### **ACTA1 / ASMA Antibody (clone 3B3) - Images**



Anti-ACTA1 / ASMA antibody IHC of human skeletal muscle.

#### **ACTA1 / ASMA Antibody (clone 3B3) - Background**

Actins are highly conserved proteins that are involved in various types of cell motility and are ubiquitously expressed in all eukaryotic cells.

#### **ACTA1 / ASMA Antibody (clone 3B3) - References**

Hanauer A., et al. Nucleic Acids Res. 11:3503-3516(1983).  
Taylor A., et al. Genomics 3:323-336(1988).  
Nowak K.J., et al. Nat. Genet. 23:208-212(1999).  
Ebert L., et al. Submitted (JUN-2004) to the EMBL/GenBank/DDBJ databases.  
Gregory S.G., et al. Nature 441:315-321(2006).