

PKP3 / Plakophilin 3 Antibody (clone 23E3/4)
Mouse Monoclonal Antibody
Catalog # ALS14881

Specification

PKP3 / Plakophilin 3 Antibody (clone 23E3/4) - Product Information

Application	IHC
Primary Accession	O9Y446
Reactivity	Human, Mouse, Dog
Host	Mouse
Clonality	Monoclonal
Calculated MW	87kDa KDa

PKP3 / Plakophilin 3 Antibody (clone 23E3/4) - Additional Information

Gene ID 11187

Other Names

Plakophilin-3, PKP3

Target/Specificity

Reacts with an epitope located between residues 570-589 in human plakophilin-3.

Reconstitution & Storage

Short term 4°C, long term aliquot and store at -20°C, avoid freeze thaw cycles. Store undiluted.

Precautions

PKP3 / Plakophilin 3 Antibody (clone 23E3/4) is for research use only and not for use in diagnostic or therapeutic procedures.

PKP3 / Plakophilin 3 Antibody (clone 23E3/4) - Protein Information

Name PKP3

Function

May play a role in junctional plaques.

Cellular Location

Nucleus. Cell junction, desmosome. Note=Nuclear and associated with desmosomes

Tissue Location

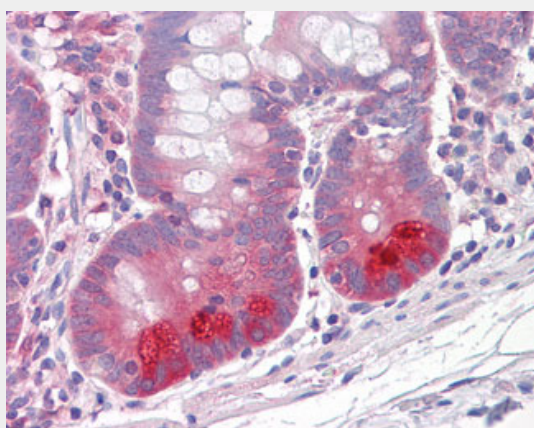
Isoform PKP3a is found in desmosomes of most simple and stratified epithelia. Not found in foreskin fibroblasts and various sarcoma-derived cell lines. Beside dendritic reticular cells of lymphatic follicles not found in non-epithelial desmosome-bearing tissues. Isoform PKP3b is abundant in the desmosomes of stratified epithelial cell but absent in simple epithelial cells, it is also expressed in the colon and its tumors.

PKP3 / Plakophilin 3 Antibody (clone 23E3/4) - Protocols

Provided below are standard protocols that you may find useful for product applications.

- [Western Blot](#)
- [Blocking Peptides](#)
- [Dot Blot](#)
- [Immunohistochemistry](#)
- [Immunofluorescence](#)
- [Immunoprecipitation](#)
- [Flow Cytometry](#)
- [Cell Culture](#)

PKP3 / Plakophilin 3 Antibody (clone 23E3/4) - Images



Anti-PKP3 / Plakophilin 3 antibody IHC of human small intestine.

PKP3 / Plakophilin 3 Antibody (clone 23E3/4) - Background

May play a role in junctional plaques.

PKP3 / Plakophilin 3 Antibody (clone 23E3/4) - References

- Schmidt A., et al. Differentiation 64:291-306(1999).
Bonne S., et al. J. Cell Sci. 112:2265-2276(1999).
Muhmer M., et al. Cell Tissue Res. 355:143-162(2014).
Totoki Y., et al. Submitted (APR-2005) to the EMBL/GenBank/DDBJ databases.
Kimura K., et al. Genome Res. 16:55-65(2006).