

EBI3 Antibody (aa120-170)
Rabbit Polyclonal Antibody
Catalog # ALS14886**Specification**

EBI3 Antibody (aa120-170) - Product Information

Application	IHC, WB
Primary Accession	Q14213
Reactivity	Human
Host	Rabbit
Clonality	Polyclonal
Calculated MW	25kDa KDa

EBI3 Antibody (aa120-170) - Additional Information**Gene ID** 10148**Other Names**

Interleukin-27 subunit beta, IL-27 subunit beta, IL-27B, Epstein-Barr virus-induced gene 3 protein, EBV-induced gene 3 protein, EBI3, IL27B

Target/Specificity

Human EBI3

Reconstitution & Storage

Store at 4°C, stable for 6 months. For long term storage, aliquot and store at -20°C.

Precautions

EBI3 Antibody (aa120-170) is for research use only and not for use in diagnostic or therapeutic procedures.

EBI3 Antibody (aa120-170) - Protein Information**Name** EBI3**Synonyms** IL27B**Function**

Associates with IL27 to form the IL-27 interleukin, a heterodimeric cytokine which functions in innate immunity. IL-27 has pro- and anti-inflammatory properties, that can regulate T-helper cell development, suppress T-cell proliferation, stimulate cytotoxic T-cell activity, induce isotype switching in B-cells, and that has diverse effects on innate immune cells. Among its target cells are CD4 T-helper cells which can differentiate in type 1 effector cells (TH1), type 2 effector cells (TH2) and IL17 producing helper T-cells (TH17). It drives rapid clonal expansion of naive but not memory CD4 T-cells. It also strongly synergizes with IL-12 to trigger interferon-gamma/IFN- gamma production of naive CD4 T-cells, binds to the cytokine receptor WSX-1/TCCR. Another important role of IL-27 is its antitumor activity as well as its antiangiogenic activity with activation of production of antiangiogenic chemokines.

Cellular Location
Secreted.

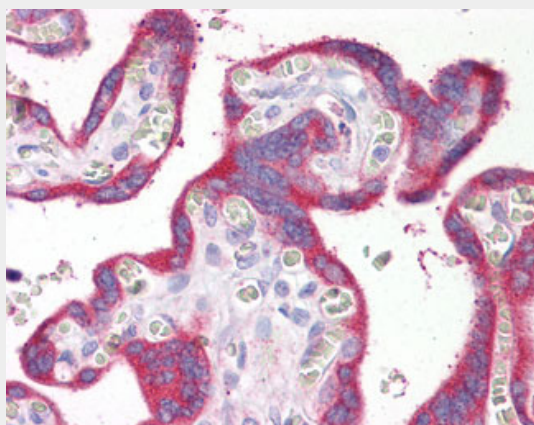
Volume
50 μ l

EBI3 Antibody (aa120-170) - Protocols

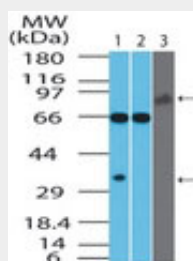
Provided below are standard protocols that you may find useful for product applications.

- [Western Blot](#)
- [Blocking Peptides](#)
- [Dot Blot](#)
- [Immunohistochemistry](#)
- [Immunofluorescence](#)
- [Immunoprecipitation](#)
- [Flow Cytometry](#)
- [Cell Culture](#)

EBI3 Antibody (aa120-170) - Images



Anti-EBI3 antibody IHC of human placenta.



Western blot of EBI3 in Jurkat cell lysate in the 1) absence and 2) presence of immunizing...

EBI3 Antibody (aa120-170) - Background

Associates with IL27 to form the IL-27 interleukin, a heterodimeric cytokine which functions in innate immunity. IL-27 has pro- and anti-inflammatory properties, that can regulate T- helper cell development, suppress T-cell proliferation, stimulate cytotoxic T-cell activity, induce isotype switching in B-cells, and that has diverse effects on innate immune cells. Among its target cells are CD4 T-helper cells which can differentiate in type 1 effector cells (TH1), type 2 effector cells (TH2)

and IL17 producing helper T-cells (TH17). It drives rapid clonal expansion of naive but not memory CD4 T-cells. It also strongly synergizes with IL-12 to trigger interferon-gamma/IFN-gamma production of naive CD4 T-cells, binds to the cytokine receptor WSX-1/TCCR. Another important role of IL-27 is its antitumor activity as well as its antiangiogenic activity with activation of production of antiangiogenic chemokines.

EBI3 Antibody (aa120-170) - References

Devergne O.,et al.J. Virol. 70:1143-1153(1996).
Livingston R.J.,et al.Submitted (OCT-2006) to the EMBL/GenBank/DDBJ databases.
Grimwood J.,et al.Nature 428:529-535(2004).
Mural R.J.,et al.Submitted (SEP-2005) to the EMBL/GenBank/DDBJ databases.
Devergne O.,et al.Proc. Natl. Acad. Sci. U.S.A. 94:12041-12046(1997).