

HMGB3 Antibody (aa150-200)
Rabbit Polyclonal Antibody
Catalog # ALS14906**Specification**

HMGB3 Antibody (aa150-200) - Product Information

Application	IHC, WB
Primary Accession	O15347
Reactivity	Human, Mouse, Chicken, Horse, Bovine, Dog
Host	Rabbit
Clonality	Polyclonal
Calculated MW	23kDa KDa

HMGB3 Antibody (aa150-200) - Additional Information**Gene ID** 3149**Other Names**

High mobility group protein B3, High mobility group protein 2a, HMG-2a, High mobility group protein 4, HMG-4, HMGB3, HMG2A, HMG4

Target/Specificity

Human HMGB3

Reconstitution & Storage

Store at 4°C for short term applications. For long term storage, aliquot and store at -20°C.

Precautions

HMGB3 Antibody (aa150-200) is for research use only and not for use in diagnostic or therapeutic procedures.

HMGB3 Antibody (aa150-200) - Protein Information**Name** HMGB3**Synonyms** HMG2A, HMG4**Function**

Multifunctional protein with various roles in different cellular compartments. May act in a redox sensitive manner. Associates with chromatin and binds DNA with a preference for non-canonical DNA structures such as single-stranded DNA. Can bend DNA and enhance DNA flexibility by looping thus providing a mechanism to promote activities on various gene promoters (By similarity). Proposed to be involved in the innate immune response to nucleic acids by acting as a cytoplasmic promiscuous immunogenic DNA/RNA sensor (By similarity). Negatively regulates B-cell and myeloid cell differentiation. In hematopoietic stem cells may regulate the balance between self-renewal and differentiation. Involved in negative regulation of canonical Wnt signaling (By similarity).

Cellular Location

Nucleus {ECO:0000250|UniProtKB:P40618, ECO:0000255|PROSITE-ProRule:PRU00267}.
Chromosome Cytoplasm {ECO:0000250|UniProtKB:O54879}

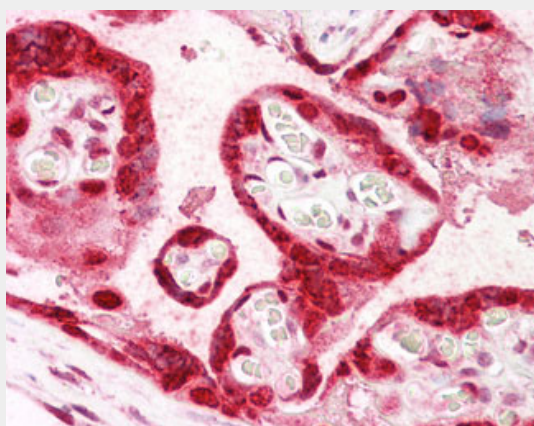
Tissue Location

Expressed predominantly in placenta.

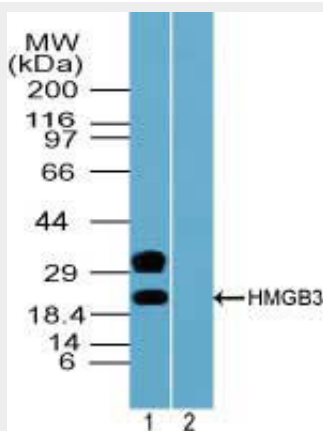
HMGB3 Antibody (aa150-200) - Protocols

Provided below are standard protocols that you may find useful for product applications.

- [Western Blot](#)
- [Blocking Peptides](#)
- [Dot Blot](#)
- [Immunohistochemistry](#)
- [Immunofluorescence](#)
- [Immunoprecipitation](#)
- [Flow Cytometry](#)
- [Cell Culture](#)

HMGB3 Antibody (aa150-200) - Images

Anti-HMGB3 antibody IHC of human placenta.



Western blot of HMGB3 in mouse placenta lysate in the 1) absence and 2) presence of immunizing...

HMGB3 Antibody (aa150-200) - Background

Binds preferentially single-stranded DNA and unwinds double-stranded DNA.

HMGB3 Antibody (aa150-200) - References

Wilke K.,et al.Gene 198:269-274(1997).
Ross M.T.,et al.Nature 434:325-337(2005).
Burkard T.R.,et al.BMC Syst. Biol. 5:17-17(2011).
Sun Y.,et al.Am. J. Hum. Genet. 87:146-153(2010).
Scott A.F.,et al.JAMA Ophthalmol. 132:1215-1220(2014).