

NANOS1 / NOS1 Antibody (aa50-100)
Rabbit Polyclonal Antibody
Catalog # ALS14909**Specification**

NANOS1 / NOS1 Antibody (aa50-100) - Product Information

Application	IHC
Primary Accession	Q8WY41
Reactivity	Human
Host	Rabbit
Clonality	Polyclonal
Calculated MW	30kDa KDa

NANOS1 / NOS1 Antibody (aa50-100) - Additional Information**Gene ID** 340719**Other Names**

Nanos homolog 1, NOS-1, EC_Rep1a, NANOS1, NOS1

Target/Specificity

Human NANOS1

Reconstitution & Storage

Store at 4°C for short term applications. For long term storage, aliquot and store at -20°C.

Precautions

NANOS1 / NOS1 Antibody (aa50-100) is for research use only and not for use in diagnostic or therapeutic procedures.

NANOS1 / NOS1 Antibody (aa50-100) - Protein Information**Name** NANOS1**Synonyms** NOS1**Function**

May act as a translational repressor which regulates translation of specific mRNAs by forming a complex with PUM2 that associates with the 3'-UTR of mRNA targets. Capable of interfering with the proadhesive and anti-invasive functions of E-cadherin. Up-regulates the production of MMP14 to promote tumor cell invasion.

Cellular Location

Cytoplasm, perinuclear region. Cytoplasm Note=Colocalizes with SNAPIN and PUM2 in the perinuclear region of germ cells.

Tissue Location

Testis and ovary (at protein level). Predominantly expressed in testis. Specifically expressed

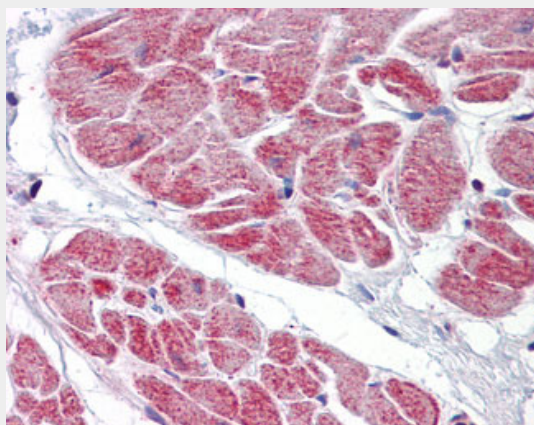
during germline development. In adult tissues, it is mainly expressed in spermatogonia, the stem cells of the germline. Also expressed during meiosis in spermatocytes. Not present in late, post-meiotic stage germ cells. Expressed in fetal ovaries, while it is weakly or not expressed in mature postmeiotic oocytes, suggesting that it may be expressed in premeiotic female germ cells. Expressed at high levels only in the E-cadherin deficient cell lines. Highly expressed in lung carcinomas and mostly detected in invasive tumor cells and its expression correlates with tumor aggressiveness.

NANOS1 / NOS1 Antibody (aa50-100) - Protocols

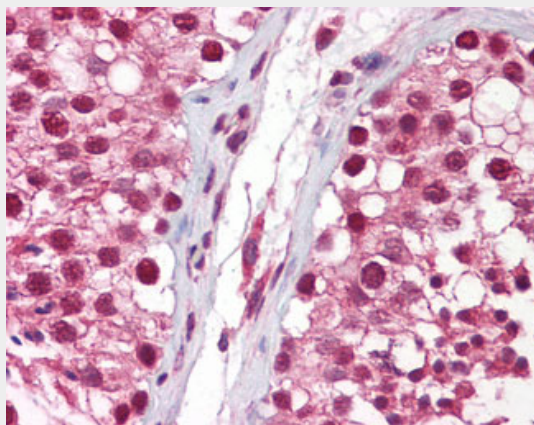
Provided below are standard protocols that you may find useful for product applications.

- [Western Blot](#)
- [Blocking Peptides](#)
- [Dot Blot](#)
- [Immunohistochemistry](#)
- [Immunofluorescence](#)
- [Immunoprecipitation](#)
- [Flow Cytometry](#)
- [Cell Culture](#)

NANOS1 / NOS1 Antibody (aa50-100) - Images



Anti-NANOS1 antibody IHC of human heart.



Anti-NANOS1 antibody IHC of human testis.

NANOS1 / NOS1 Antibody (aa50-100) - Background

May act as a translational repressor which regulates translation of specific mRNAs by forming a complex with PUM2 that associates with the 3'-UTR of mRNA targets. Capable of interfering with the proadhesive and anti-invasive functions of E-cadherin. Up-regulates the production of MMP14 to promote tumor cell invasion.

NANOS1 / NOS1 Antibody (aa50-100) - References

Jaruzelska J., et al. Dev. Genes Evol. 213:120-126(2003).
Strumane K., et al. Cancer Res. 66:10007-10015(2006).
Deloukas P., et al. Nature 429:375-381(2004).
Bonnomet A., et al. Oncogene 27:3692-3699(2008).
Ginter-Matuszewska B., et al. Mol. Hum. Reprod. 15:173-179(2009).