

GFI1 Antibody (aa280-330)
Rabbit Polyclonal Antibody
Catalog # ALS14912**Specification**

GFI1 Antibody (aa280-330) - Product Information

Application	WB
Primary Accession	Q99684
Reactivity	Human, Mouse, Rat, Chicken, Bovine
Host	Rabbit
Clonality	Polyclonal
Calculated MW	45kDa KDa

GFI1 Antibody (aa280-330) - Additional Information**Gene ID** 2672**Other Names**

Zinc finger protein Gfi-1, Growth factor independent protein 1, Zinc finger protein 163, GFI1, ZNF163

Target/Specificity

Human GFI1

Reconstitution & Storage

Store at 4°C for short term applications. For long term storage, aliquot and store at -20°C.

Precautions

GFI1 Antibody (aa280-330) is for research use only and not for use in diagnostic or therapeutic procedures.

GFI1 Antibody (aa280-330) - Protein Information**Name** GFI1**Synonyms** ZNF163**Function**

Transcription repressor essential for hematopoiesis. Functions in a cell-context and development-specific manner. Binds to 5'-TAAATCAC[AT]GCA-3' in the promoter region of a large number of genes. Component of several complexes, including the EHMT2-GFI1-HDAC1, AJUBA-GFI1-HDAC1 and RCOR-GFI-KDM1A-HDAC complexes, that suppress, via histone deacetylase (HDAC) recruitment, a number of genes implicated in multilineage blood cell development. Regulates neutrophil differentiation, promotes proliferation of lymphoid cells, and is required for granulocyte development. Inhibits SPI1 transcriptional activity at macrophage-specific genes, repressing macrophage differentiation of myeloid progenitor cells and promoting granulocyte commitment (By similarity). Mediates, together with U2AF1L4, the alternative splicing of CD45 and controls T-cell receptor signaling. Regulates the endotoxin-mediated Toll-like receptor

(TLR) inflammatory response by antagonizing RELA. Cooperates with CBFA2T2 to regulate ITGB1-dependent neurite growth. Controls cell-cycle progression by repressing CDKNIA/p21 transcription in response to TGFB1 via recruitment of GFI1 by ZBTB17 to the CDKNIA/p21 and CDKNIB promoters. Required for the maintenance of inner ear hair cells.

Cellular Location

Nucleus Note=Colocalizes with PIAS3 and RUNX1T1 in nuclear dots

Volume

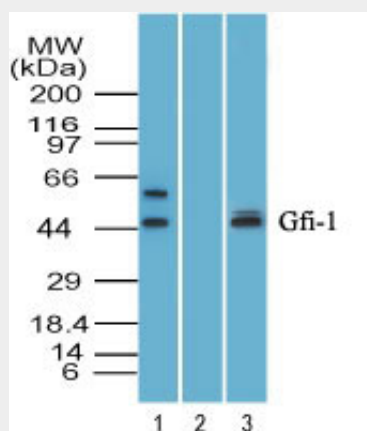
50 µl

GFI1 Antibody (aa280-330) - Protocols

Provided below are standard protocols that you may find useful for product applications.

- [Western Blot](#)
- [Blocking Peptides](#)
- [Dot Blot](#)
- [Immunohistochemistry](#)
- [Immunofluorescence](#)
- [Immunoprecipitation](#)
- [Flow Cytometry](#)
- [Cell Culture](#)

GFI1 Antibody (aa280-330) - Images



Western blot of Zinc finger protein Gfi-1 in human HepG2 cell lysate in the 1) absence and 2)...

GFI1 Antibody (aa280-330) - Background

Transcription repressor essential for hematopoiesis. Functions in a cell-context and development-specific manner. Binds to 5'-TAAATCAC[AT]GCA-3' in the promoter region of a large number of genes. Component of several complexes, including the EHMT2- GFI1-HDAC1, AJUBA-GFI1-HDAC1 and RCOR-GFI-KDM1A-HDAC complexes, that suppress, via histone deacetylase (HDAC) recruitment, a number of genes implicated in multilineage blood cell development. Regulates neutrophil differentiation, promotes proliferation of lymphoid cells, and is required for granulocyte development. Mediates, together with U2AF1L4, the alternative splicing of CD45 and controls T-cell receptor signaling. Regulates the endotoxin- mediated Toll-like receptor (TLR) inflammatory response by antagonizing RELA. Cooperates with CBFA2T2 to regulate ITGB1-dependent neurite growth. Controls cell-cycle progression by repressing CDKNIA/p21 transcription

in response to TGFB1 via recruitment of GFI1 by ZBTB17 to the CDKN1A/p21 and CDKN1B promoters.
Required for the maintenance of inner ear hair cells.

GFI1 Antibody (aa280-330) - References

Roberts T., et al. *Oncogene* 14:1003-1005(1997).
Zweidler-Mckay P.A., et al. *Mol. Cell. Biol.* 16:4024-4034(1996).
Roedel B., et al. *EMBO J.* 19:5845-5855(2000).
McGhee L., et al. *J. Cell. Biochem.* 89:1005-1018(2003).
Duan Z., et al. *Mol. Cell. Biol.* 25:10338-10351(2005).