

APOA1 / Apolipoprotein A 1 Antibody
Goat Polyclonal Antibody
Catalog # ALS14936**Specification**

APOA1 / Apolipoprotein A 1 Antibody - Product Information

Application	IHC
Primary Accession	P02647
Reactivity	Human
Host	Goat
Clonality	Polyclonal
Calculated MW	31kDa KDa

APOA1 / Apolipoprotein A 1 Antibody - Additional Information**Gene ID** 335**Other Names**

Apolipoprotein A-I, Apo-AI, ApoA-I, Apolipoprotein A1, Proapolipoprotein A-I, ProapoA-I, Truncated apolipoprotein A-I, Apolipoprotein A-I(1-242), APOA1

Target/Specificity

Typically less than 1% cross-reactivity against other types of apoLipoprotein was detected by ELISA against purified standards. This antibody reacts with human apoLipoprotein A-I and has negligible cross-reactivity with Type A-II, B, C-I, C-II, C-II ...

Reconstitution & Storage

Store vial at 4 C prior to opening. This product is stable at 4 C as an undiluted liquid. Dilute only prior to immediate use. For extended storage, mix with an equal volume of glycerol, aliquot contents and freeze at -20 C or below.

Precautions

APOA1 / Apolipoprotein A 1 Antibody is for research use only and not for use in diagnostic or therapeutic procedures.

APOA1 / Apolipoprotein A 1 Antibody - Protein Information**Name** APOA1 ([HGNC:600](#))**Function**

Participates in the reverse transport of cholesterol from tissues to the liver for excretion by promoting cholesterol efflux from tissues and by acting as a cofactor for the lecithin cholesterol acyltransferase (LCAT). As part of the SPAP complex, activates spermatozoa motility.

Cellular Location

Secreted.

Tissue Location

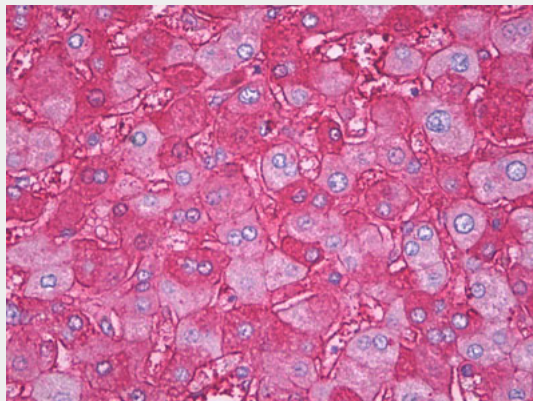
Major protein of plasma HDL, also found in chylomicrons. Synthesized in the liver and small intestine. The oxidized form at Met-110 and Met-136 is increased in individuals with increased risk for coronary artery disease, such as in carrier of the eNOSa/b genotype and exposure to cigarette smoking. It is also present in increased levels in aortic lesions relative to native ApoA-I and increased levels are seen with increasing severity of disease

APOA1 / Apolipoprotein A 1 Antibody - Protocols

Provided below are standard protocols that you may find useful for product applications.

- [Western Blot](#)
- [Blocking Peptides](#)
- [Dot Blot](#)
- [Immunohistochemistry](#)
- [Immunofluorescence](#)
- [Immunoprecipitation](#)
- [Flow Cytometry](#)
- [Cell Culture](#)

APOA1 / Apolipoprotein A 1 Antibody - Images



Anti-Apolipoprotein A I antibody IHC of human liver.

APOA1 / Apolipoprotein A 1 Antibody - Background

Participates in the reverse transport of cholesterol from tissues to the liver for excretion by promoting cholesterol efflux from tissues and by acting as a cofactor for the lecithin cholesterol acyltransferase (LCAT). As part of the SPAP complex, activates spermatozoa motility.

APOA1 / Apolipoprotein A 1 Antibody - References

Shoulders C.C.,et al.Nucleic Acids Res. 11:2827-2837(1983).
Cheung P.,et al.Nucleic Acids Res. 11:3703-3715(1983).
Karathanasis S.K.,et al.Proc. Natl. Acad. Sci. U.S.A. 80:6147-6151(1983).
Seilhamer J.J.,et al.DNA 3:309-317(1984).
Sharpe C.R.,et al.Nucleic Acids Res. 12:3917-3932(1984).