

**CFH / Complement Factor H Antibody**  
**Goat Polyclonal Antibody**  
**Catalog # ALS14937****Specification**

---

**CFH / Complement Factor H Antibody - Product Information**

|                   |                        |
|-------------------|------------------------|
| Application       | IHC                    |
| Primary Accession | <a href="#">P08603</a> |
| Reactivity        | Human                  |
| Host              | Goat                   |
| Clonality         | Polyclonal             |
| Calculated MW     | 139kDa KDa             |

**CFH / Complement Factor H Antibody - Additional Information****Gene ID** 3075**Other Names**

Complement factor H, H factor 1, CFH, HF, HF1, HF2

**Target/Specificity**

Recognizes human Factor H.

**Reconstitution & Storage**

May be stored at 4°C for short-term only. Aliquot to avoid repeated freezing and thawing. Store at -20°C. Aliquots are stable for at least 12 months.

**Precautions**

CFH / Complement Factor H Antibody is for research use only and not for use in diagnostic or therapeutic procedures.

**CFH / Complement Factor H Antibody - Protein Information****Name** CFH**Synonyms** HF, HF1, HF2**Function**

Glycoprotein that plays an essential role in maintaining a well-balanced immune response by modulating complement activation. Acts as a soluble inhibitor of complement, where its binding to self markers such as glycan structures prevents complement activation and amplification on cell surfaces (PubMed: [21285368](http://www.uniprot.org/citations/21285368), PubMed: [25402769](http://www.uniprot.org/citations/25402769)). Accelerates the decay of the complement alternative pathway (AP) C3 convertase C3bBb, thus preventing local formation of more C3b, the central player of the complement amplification loop (PubMed: [19503104](http://www.uniprot.org/citations/19503104), PubMed: [26700768](http://www.uniprot.org/citations/26700768)). As a cofactor of the serine protease factor I, CFH also regulates

proteolytic degradation of already-deposited C3b (PubMed:<a href="http://www.uniprot.org/citations/23332154" target="\_blank">23332154</a>, PubMed:<a href="http://www.uniprot.org/citations/18252712" target="\_blank">18252712</a>, PubMed:<a href="http://www.uniprot.org/citations/28671664" target="\_blank">28671664</a>). In addition, mediates several cellular responses through interaction with specific receptors. For example, interacts with CR3/ITGAM receptor and thereby mediates the adhesion of human neutrophils to different pathogens. In turn, these pathogens are phagocytosed and destroyed (PubMed:<a href="http://www.uniprot.org/citations/9558116" target="\_blank">9558116</a>, PubMed:<a href="http://www.uniprot.org/citations/20008295" target="\_blank">20008295</a>).

### **Cellular Location**

Secreted.

### **Tissue Location**

Expressed in the retinal pigment epithelium (at protein level) (PubMed:25136834). CFH is one of the most abundant complement components in blood where the liver is the major source of CFH protein in vivo. In addition, CFH is secreted by additional cell types including monocytes, fibroblasts, or endothelial cells (PubMed:6444659, PubMed:2968404, PubMed:2139673, PubMed:25136834)

### **Volume**

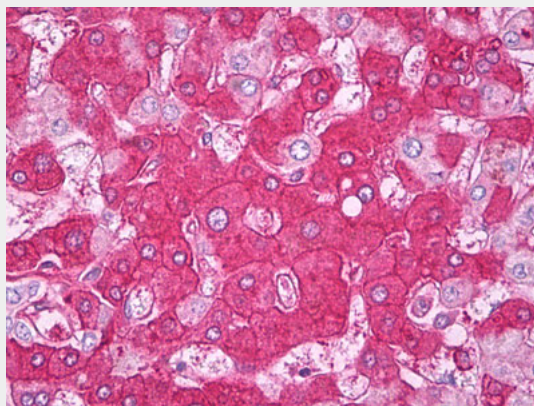
50 µl

## **CFH / Complement Factor H Antibody - Protocols**

Provided below are standard protocols that you may find useful for product applications.

- [Western Blot](#)
- [Blocking Peptides](#)
- [Dot Blot](#)
- [Immunohistochemistry](#)
- [Immunofluorescence](#)
- [Immunoprecipitation](#)
- [Flow Cytometry](#)
- [Cell Culture](#)

## **CFH / Complement Factor H Antibody - Images**



Anti-Factor H antibody IHC of human liver.

## **CFH / Complement Factor H Antibody - Background**

Factor H functions as a cofactor in the inactivation of C3b by factor I and also increases the rate of dissociation of the C3bBb complex (C3 convertase) and the (C3b)NBB complex (C5 convertase) in the alternative complement pathway.

#### **CFH / Complement Factor H Antibody - References**

Ripoche J.,et al.Biochem. J. 249:593-602(1988).  
Gregory S.G.,et al.Nature 441:315-321(2006).  
Schulz T.F.,et al.Eur. J. Immunol. 16:1351-1355(1986).  
Kristensen T.,et al.J. Immunol. 136:3407-3411(1986).  
Estaller C.,et al.J. Immunol. 146:3190-3196(1991).