

MEF2A / MEF2 Antibody (aa374-423)
Rabbit Polyclonal Antibody
Catalog # ALS15005**Specification**

MEF2A / MEF2 Antibody (aa374-423) - Product Information

Application	IF
Primary Accession	Q02078
Reactivity	Human, Mouse, Rat
Host	Rabbit
Clonality	Polyclonal
Calculated MW	55kDa KDa

MEF2A / MEF2 Antibody (aa374-423) - Additional Information**Gene ID** 4205**Other Names**

Myocyte-specific enhancer factor 2A, Serum response factor-like protein 1, MEF2A, MEF2

Target/Specificity

MEF2A Antibody detects endogenous levels of total MEF2A protein.

Reconstitution & Storage

Long term: -20°C; Short term: +4°C; Avoid freeze-thaw cycles.

Precautions

MEF2A / MEF2 Antibody (aa374-423) is for research use only and not for use in diagnostic or therapeutic procedures.

MEF2A / MEF2 Antibody (aa374-423) - Protein Information**Name** MEF2A**Synonyms** MEF2**Function**

Transcriptional activator which binds specifically to the MEF2 element, 5'-YTA[AT](4)TAR-3', found in numerous muscle-specific genes. Also involved in the activation of numerous growth factor- and stress-induced genes. Mediates cellular functions not only in skeletal and cardiac muscle development, but also in neuronal differentiation and survival. Plays diverse roles in the control of cell growth, survival and apoptosis via p38 MAPK signaling in muscle-specific and/or growth factor-related transcription. In cerebellar granule neurons, phosphorylated and sumoylated MEF2A represses transcription of NUR77 promoting synaptic differentiation. Associates with chromatin to the ZNF16 promoter.

Cellular Location

Nucleus {ECO:0000255|PROSITE-ProRule:PRU00251, ECO:0000269|PubMed:12691662,

ECO:0000269|PubMed:16563226}

Tissue Location

Isoform MEF2 and isoform MEFA are expressed only in skeletal and cardiac muscle and in the brain. Isoform RSRFC4 and isoform RSRFC9 are expressed in all tissues examined

Volume

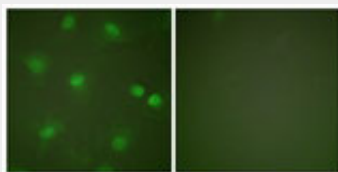
50 µl

MEF2A / MEF2 Antibody (aa374-423) - Protocols

Provided below are standard protocols that you may find useful for product applications.

- [Western Blot](#)
- [Blocking Peptides](#)
- [Dot Blot](#)
- [Immunohistochemistry](#)
- [Immunofluorescence](#)
- [Immunoprecipitation](#)
- [Flow Cytometry](#)
- [Cell Culture](#)

MEF2A / MEF2 Antibody (aa374-423) - Images



Immunofluorescence of HeLa cells, using MEF2A Antibody.

MEF2A / MEF2 Antibody (aa374-423) - Background

Transcriptional activator which binds specifically to the MEF2 element, 5'-YTA[AT](4)TAR-3', found in numerous muscle-specific genes. Also involved in the activation of numerous growth factor- and stress-induced genes. Mediates cellular functions not only in skeletal and cardiac muscle development, but also in neuronal differentiation and survival. Plays diverse roles in the control of cell growth, survival and apoptosis via p38 MAPK signaling in muscle-specific and/or growth factor-related transcription. In cerebellar granule neurons, phosphorylated and sumoylated MEF2A represses transcription of NUR77 promoting synaptic differentiation. Associates with chromatin to the ZNF16 promoter.

MEF2A / MEF2 Antibody (aa374-423) - References

Pollock R., et al. *Genes Dev.* 5:2327-2341(1991).
Treisman R., et al. Submitted (NOV-1993) to the EMBL/GenBank/DDBJ databases.
Yu Y.-T., et al. *Genes Dev.* 6:1783-1798(1992).
Suzuki E., et al. Submitted (FEB-1996) to the EMBL/GenBank/DDBJ databases.
Ota T., et al. *Nat. Genet.* 36:40-45(2004).