

**FLNA / Filamin A Antibody (aa2121-2170)**  
**Rabbit Polyclonal Antibody**  
**Catalog # ALS15008****Specification**

---

**FLNA / Filamin A Antibody (aa2121-2170) - Product Information**

|                   |                        |
|-------------------|------------------------|
| Application       | WB, IHC                |
| Primary Accession | <a href="#">P21333</a> |
| Reactivity        | Human, Mouse, Rat      |
| Host              | Rabbit                 |
| Clonality         | Polyclonal             |
| Calculated MW     | 281kDa KDa             |

**FLNA / Filamin A Antibody (aa2121-2170) - Additional Information****Gene ID** 2316**Other Names**

Filamin-A, FLN-A, Actin-binding protein 280, ABP-280, Alpha-filamin, Endothelial actin-binding protein, Filamin-1, Non-muscle filamin, FLNA, FLN, FLN1

**Target/Specificity**

Filamin A Antibody detects endogenous levels of total Filamin A protein.

**Reconstitution & Storage**

Long term: -20°C; Short term: +4°C; Avoid freeze-thaw cycles.

**Precautions**

FLNA / Filamin A Antibody (aa2121-2170) is for research use only and not for use in diagnostic or therapeutic procedures.

**FLNA / Filamin A Antibody (aa2121-2170) - Protein Information****Name** FLNA**Synonyms** FLN, FLN1**Function**

Promotes orthogonal branching of actin filaments and links actin filaments to membrane glycoproteins. Anchors various transmembrane proteins to the actin cytoskeleton and serves as a scaffold for a wide range of cytoplasmic signaling proteins. Interaction with FLNB may allow neuroblast migration from the ventricular zone into the cortical plate. Tethers cell surface-localized furin, modulates its rate of internalization and directs its intracellular trafficking (By similarity). Involved in ciliogenesis. Plays a role in cell-cell contacts and adherens junctions during the development of blood vessels, heart and brain organs. Plays a role in platelets morphology through interaction with SYK that regulates ITAM- and ITAM-like-containing receptor signaling, resulting in by platelet cytoskeleton organization maintenance (By similarity). During the axon guidance process, required for growth cone collapse induced by SEMA3A-mediated stimulation of

neurons (PubMed:<a href="http://www.uniprot.org/citations/25358863" target="\_blank">25358863</a>).

#### Cellular Location

Cytoplasm, cell cortex. Cytoplasm, cytoskeleton {ECO:0000250|UniProtKB:Q8BTM8}. Perikaryon {ECO:0000250|UniProtKB:Q8BTM8}. Cell projection, growth cone {ECO:0000250|UniProtKB:Q8BTM8}. Note=Colocalizes with CPMR1 in the central region of DRG neuron growth cone (By similarity). Following SEMA3A stimulation of DRG neurons, colocalizes with F-actin (By similarity). {ECO:0000250|UniProtKB:Q8BTM8}

#### Tissue Location

Ubiquitous.

#### Volume

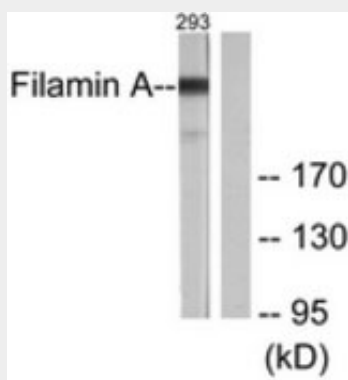
50 µl

### FLNA / Filamin A Antibody (aa2121-2170) - Protocols

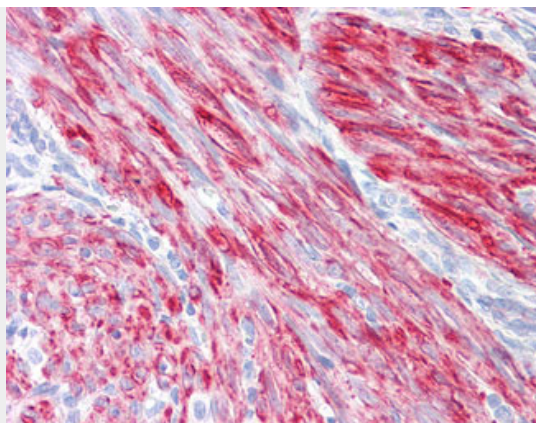
Provided below are standard protocols that you may find useful for product applications.

- [Western Blot](#)
- [Blocking Peptides](#)
- [Dot Blot](#)
- [Immunohistochemistry](#)
- [Immunofluorescence](#)
- [Immunoprecipitation](#)
- [Flow Cytometry](#)
- [Cell Culture](#)

### FLNA / Filamin A Antibody (aa2121-2170) - Images



Western blot of extracts from 293 cells, treated with EGF 200 ng/ml 5', using Filamin Antibody.



Anti-FLNA / FMD antibody IHC of human uterus.

#### **FLNA / Filamin A Antibody (aa2121-2170) - Background**

Promotes orthogonal branching of actin filaments and links actin filaments to membrane glycoproteins. Anchors various transmembrane proteins to the actin cytoskeleton and serves as a scaffold for a wide range of cytoplasmic signaling proteins. Interaction with FLNA may allow neuroblast migration from the ventricular zone into the cortical plate. Tethers cell surface- localized furin, modulates its rate of internalization and directs its intracellular trafficking (By similarity). Involved in ciliogenesis.

#### **FLNA / Filamin A Antibody (aa2121-2170) - References**

Gorlin J.B.,et al.J. Cell Biol. 111:1089-1105(1990).  
Patrosso M.C.,et al.Genomics 21:71-76(1994).  
Chen E.Y.,et al.Hum. Mol. Genet. 5:659-668(1996).  
Li J.,et al.Mol. Cell. Proteomics 9:2517-2528(2010).  
Ota T.,et al.Nat. Genet. 36:40-45(2004).