

SNCB / Beta-Synuclein Antibody (aa85-134)
Rabbit Polyclonal Antibody
Catalog # ALS15068**Specification**

SNCB / Beta-Synuclein Antibody (aa85-134) - Product Information

Application	IF
Primary Accession	Q16143
Reactivity	Human, Mouse, Rat
Host	Rabbit
Clonality	Polyclonal
Calculated MW	14kDa KDa

SNCB / Beta-Synuclein Antibody (aa85-134) - Additional Information**Gene ID** 6620**Other Names**

Beta-synuclein, SNCB

Target/Specificity

Synuclein beta Antibody detects endogenous levels of total Synuclein beta protein.

Reconstitution & Storage

Store at -20°C for up to one year.

Precautions

SNCB / Beta-Synuclein Antibody (aa85-134) is for research use only and not for use in diagnostic or therapeutic procedures.

SNCB / Beta-Synuclein Antibody (aa85-134) - Protein Information**Name** SNCB**Function**

Non-amyloid component of senile plaques found in Alzheimer disease. Could act as a regulator of SNCA aggregation process. Protects neurons from staurosporine and 6-hydroxy dopamine (6OHDA)-stimulated caspase activation in a p53/TP53-dependent manner. Contributes to restore the SNCA anti-apoptotic function abolished by 6OHDA. Not found in the Lewy bodies associated with Parkinson disease.

Cellular Location

Cytoplasm.

Tissue Location

Expressed predominantly in brain; concentrated in presynaptic nerve terminals

Volume

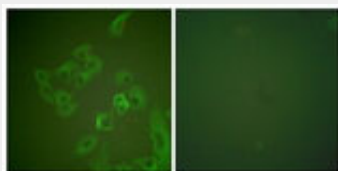
50 µl

SNCB / Beta-Synuclein Antibody (aa85-134) - Protocols

Provided below are standard protocols that you may find useful for product applications.

- [Western Blot](#)
- [Blocking Peptides](#)
- [Dot Blot](#)
- [Immunohistochemistry](#)
- [Immunofluorescence](#)
- [Immunoprecipitation](#)
- [Flow Cytometry](#)
- [Cell Culture](#)

SNCB / Beta-Synuclein Antibody (aa85-134) - Images



Immunofluorescence of A549 cells, using Synuclein beta Antibody.

SNCB / Beta-Synuclein Antibody (aa85-134) - Background

Non-amyloid component of senile plaques found in Alzheimer disease. Could act as a regulator of SNCA aggregation process. Protects neurons from staurosporine and 6-hydroxy dopamine (6OHDA)-stimulated caspase activation in a p53/TP53- dependent manner. Contributes to restore the SNCA anti-apoptotic function abolished by 6OHDA. Not found in the Lewy bodies associated with Parkinson disease.

SNCB / Beta-Synuclein Antibody (aa85-134) - References

Jakes R.,et al.FEBS Lett. 345:27-32(1994).
Lavedan C.,et al.Genomics 54:173-175(1998).
Kalnine N.,et al.Submitted (MAY-2003) to the EMBL/GenBank/DDBJ databases.
Ebert L.,et al.Submitted (JUN-2004) to the EMBL/GenBank/DDBJ databases.
Lubec G.,et al.Submitted (DEC-2008) to UniProtKB.