

CLIC4 Antibody (aa1-50)
Rabbit Polyclonal Antibody
Catalog # ALS15120**Specification**

CLIC4 Antibody (aa1-50) - Product Information

Application	WB, IHC
Primary Accession	Q9Y696
Reactivity	Human, Mouse, Rat
Host	Rabbit
Clonality	Polyclonal
Calculated MW	29kDa KDa

CLIC4 Antibody (aa1-50) - Additional Information**Gene ID** 25932**Other Names**

Chloride intracellular channel protein 4, Intracellular chloride ion channel protein p64H1, CLIC4

Target/Specificity

CLIC4 Antibody detects endogenous levels of total CLIC4 protein.

Reconstitution & Storage

Store at -20°C for up to one year.

Precautions

CLIC4 Antibody (aa1-50) is for research use only and not for use in diagnostic or therapeutic procedures.

CLIC4 Antibody (aa1-50) - Protein Information**Name** CLIC4**Function**

Can insert into membranes and form poorly selective ion channels that may also transport chloride ions. Channel activity depends on the pH. Membrane insertion seems to be redox-regulated and may occur only under oxydizing conditions. Promotes cell-surface expression of HRH3. Has alternate cellular functions like a potential role in angiogenesis or in maintaining apical-basolateral membrane polarity during mitosis and cytokinesis. Could also promote endothelial cell proliferation and regulate endothelial morphogenesis (tubulogenesis).

Cellular Location

Cytoplasm, cytoskeleton, microtubule organizing center, centrosome. Cytoplasmic vesicle membrane; Single-pass membrane protein. Nucleus. Cell membrane; Single-pass membrane protein. Mitochondrion {ECO:0000250|UniProtKB:Q9Z0W7}. Cell junction. Note=Colocalized with AKAP9 at the centrosome and midbody. Exists both as soluble cytoplasmic protein and as membrane protein with probably a single transmembrane domain Present in an intracellular

vesicular compartment that likely represent trans-Golgi network vesicles. Might not be present in the nucleus of cardiac cells. {ECO:0000250|UniProtKB:Q9Z0W7, ECO:0000269|PubMed:14569596}

Tissue Location

Detected in epithelial cells from colon, esophagus and kidney (at protein level). Expression is prominent in heart, kidney, placenta and skeletal muscle.

Volume

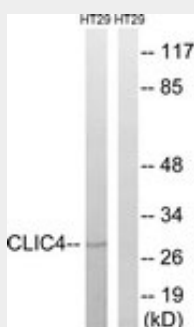
50 µl

CLIC4 Antibody (aa1-50) - Protocols

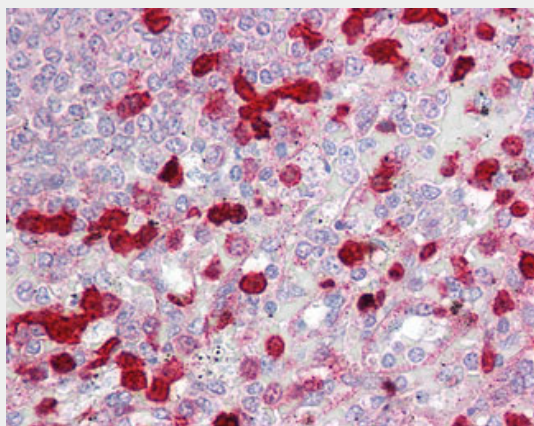
Provided below are standard protocols that you may find useful for product applications.

- [Western Blot](#)
- [Blocking Peptides](#)
- [Dot Blot](#)
- [Immunohistochemistry](#)
- [Immunofluorescence](#)
- [Immunoprecipitation](#)
- [Flow Cytometry](#)
- [Cell Culture](#)

CLIC4 Antibody (aa1-50) - Images



Western blot of extracts from HT-29 cells, using CLIC4 Antibody.



Anti-CLIC4 antibody IHC of human spleen.

CLIC4 Antibody (aa1-50) - Background

Can insert into membranes and form poorly selective ion channels that may also transport chloride ions. Channel activity depends on the pH. Membrane insertion seems to be redox-regulated and may occur only under oxydizing conditions. Promotes cell- surface expression of HRH3. Has alternate cellular functions like a potential role in angiogenesis or in maintaining apical- basolateral membrane polarity during mitosis and cytokinesis. Could also promote endothelial cell proliferation and regulate endothelial morphogenesis (tubulogenesis).

CLIC4 Antibody (aa1-50) - References

Edwards J.C.,et al.Am. J. Physiol. 276:F398-F408(1999).
Chuang J.Z.,et al.J. Neurosci. 19:2919-2928(1999).
Wiemann S.,et al.Genome Res. 11:422-435(2001).
Bienvenut W.V.,et al.Submitted (FEB-2006) to UniProtKB.
Berryman M.,et al.Mol. Biol. Cell 11:1509-1521(2000).