

TFF1 / pS2 Antibody
Rabbit Polyclonal Antibody
Catalog # ALS15152**Specification**

TFF1 / pS2 Antibody - Product Information

Application	IHC
Primary Accession	P04155
Reactivity	Human, Rat
Host	Rabbit
Clonality	Polyclonal
Calculated MW	9kDa KDa

TFF1 / pS2 Antibody - Additional Information**Gene ID** 7031**Other Names**

Trefoil factor 1, Breast cancer estrogen-inducible protein, PNR-2, Polypeptide P1.A, hP1.A, Protein pS2, TFF1, BCEI, PS2

Reconstitution & Storage

Short term 4°C, long term aliquot and store at -20°C, avoid freeze thaw cycles.

Precautions

TFF1 / pS2 Antibody is for research use only and not for use in diagnostic or therapeutic procedures.

TFF1 / pS2 Antibody - Protein Information**Name** TFF1**Synonyms** BCEI, PS2**Function**

Stabilizer of the mucous gel overlying the gastrointestinal mucosa that provides a physical barrier against various noxious agents. May inhibit the growth of calcium oxalate crystals in urine.

Cellular Location

Secreted

Tissue Location

Found in stomach, with highest levels in the upper gastric mucosal cells (at protein level). Detected in goblet cells of the small and large intestine and rectum, small submucosal glands in the esophagus, mucous acini of the sublingual gland, submucosal glands of the trachea, and epithelial cells lining the exocrine pancreatic ducts but not in the remainder of the pancreas (at protein level) Scattered expression is detected in the epithelial cells of the gallbladder and submucosal glands of the vagina, and weak expression is observed in the bronchial goblet cells of

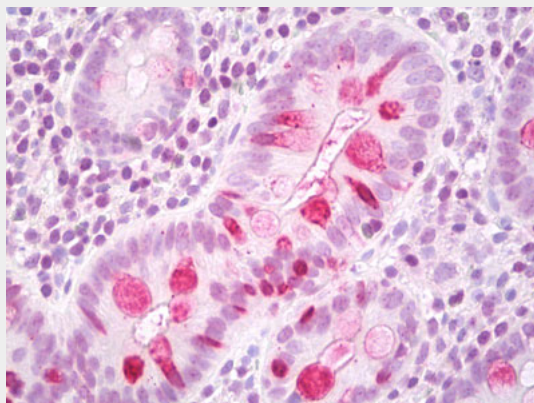
the pseudostratified epithelia in the respiratory system (at protein level). Detected in urine (at protein level). Strongly expressed in breast cancer but at low levels in normal mammary tissue. It is regulated by estrogen in MCF-7 cells. Strong expression found in normal gastric mucosa and in the regenerative tissues surrounding ulcerous lesions of gastrointestinal tract, but lower expression found in gastric cancer (at protein level).

TFF1 / pS2 Antibody - Protocols

Provided below are standard protocols that you may find useful for product applications.

- [Western Blot](#)
- [Blocking Peptides](#)
- [Dot Blot](#)
- [Immunohistochemistry](#)
- [Immunofluorescence](#)
- [Immunoprecipitation](#)
- [Flow Cytometry](#)
- [Cell Culture](#)

TFF1 / pS2 Antibody - Images



Anti-PS2 / TFF1 antibody IHC of human colon, goblet cells.

TFF1 / pS2 Antibody - Background

Stabilizer of the mucous gel overlying the gastrointestinal mucosa that provides a physical barrier against various noxious agents. May inhibit the growth of calcium oxalate crystals in urine.

TFF1 / pS2 Antibody - References

- Jakowlew S.B., et al. *Nucleic Acids Res.* 12:2861-2878(1984).
Prud'Homme J.-F., et al. *DNA* 4:11-21(1985).
Jeltsch J.-M., et al. *Nucleic Acids Res.* 15:1401-1414(1987).
Takahashi H., et al. *FEBS Lett.* 261:283-286(1990).
Mori K., et al. *J. Biochem.* 107:73-76(1990).