

PLCG1 Antibody (clone 2B1)
Mouse Monoclonal Antibody
Catalog # ALS15173**Specification**

PLCG1 Antibody (clone 2B1) - Product Information

Application	WB, IHC
Primary Accession	P19174
Reactivity	Human, Mouse, Rat
Host	Mouse
Clonality	Monoclonal
Calculated MW	149kDa KDa

PLCG1 Antibody (clone 2B1) - Additional Information**Gene ID** 5335**Other Names**

1-phosphatidylinositol 4, 5-bisphosphate phosphodiesterase gamma-1, 3.1.4.11, PLC-148, Phosphoinositide phospholipase C-gamma-1, Phospholipase C-II, PLC-II, Phospholipase C-gamma-1, PLC-gamma-1, PLCG1, PLC1

Reconstitution & Storage

Long term: -20°C; Short term: -20°C

Precautions

PLCG1 Antibody (clone 2B1) is for research use only and not for use in diagnostic or therapeutic procedures.

PLCG1 Antibody (clone 2B1) - Protein Information**Name** PLCG1 ([HGNC:9065](#))**Synonyms** PLC1**Function**

Mediates the production of the second messenger molecules diacylglycerol (DAG) and inositol 1,4,5-trisphosphate (IP3). Plays an important role in the regulation of intracellular signaling cascades. Becomes activated in response to ligand-mediated activation of receptor-type tyrosine kinases, such as PDGFRA, PDGFRB, EGFR, FGFR1, FGFR2, FGFR3 and FGFR4 (By similarity). Plays a role in actin reorganization and cell migration (PubMed:[17229814](http://www.uniprot.org/citations/17229814)). Guanine nucleotide exchange factor that binds the GTPase DNM1 and catalyzes the dissociation of GDP, allowing a GTP molecule to bind in its place, therefore enhancing DNM1-dependent endocytosis (By similarity).

Cellular Location

Cell projection, lamellipodium. Cell projection, ruffle. Note=Rapidly redistributed to ruffles and

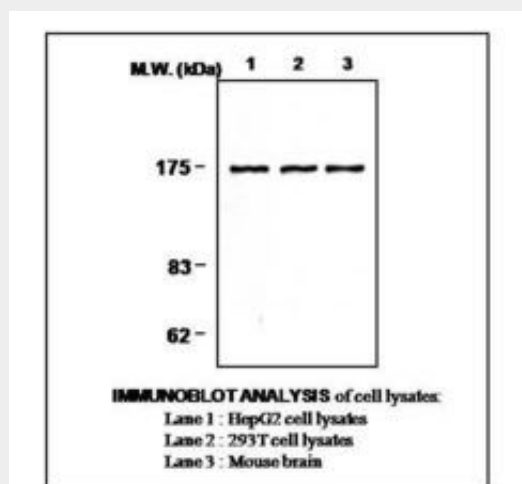
lamellipodia structures in response to epidermal growth factor (EGF) treatment.

PLCG1 Antibody (clone 2B1) - Protocols

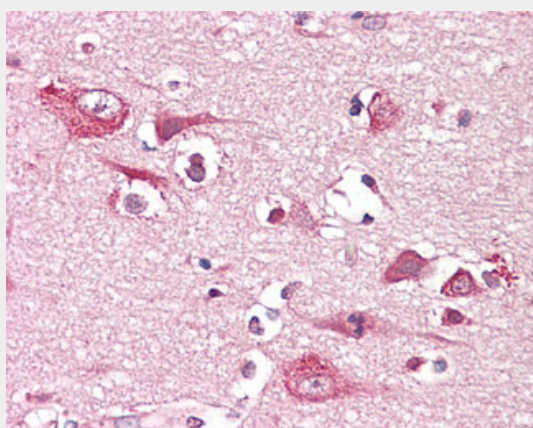
Provided below are standard protocols that you may find useful for product applications.

- [Western Blot](#)
- [Blocking Peptides](#)
- [Dot Blot](#)
- [Immunohistochemistry](#)
- [Immunofluorescence](#)
- [Immunoprecipitation](#)
- [Flow Cytometry](#)
- [Cell Culture](#)

PLCG1 Antibody (clone 2B1) - Images



0



Anti-PLCG1 antibody IHC of human brain, cortex.

PLCG1 Antibody (clone 2B1) - Background

Mediates the production of the second messenger molecules diacylglycerol (DAG) and inositol 1,4,5-trisphosphate (IP3). Plays an important role in the regulation of intracellular signaling

cascades. Becomes activated in response to ligand- mediated activation of receptor-type tyrosine kinases, such as PDGFRA, PDGFRB, FGFR1, FGFR2, FGFR3 and FGFR4. Plays a role in actin reorganization and cell migration.

PLCG1 Antibody (clone 2B1) - References

Burgess W.H.,et al.Mol. Cell. Biol. 10:4770-4777(1990).
Deloukas P.,et al.Nature 414:865-871(2001).
Mural R.J.,et al.Submitted (SEP-2005) to the EMBL/GenBank/DDBJ databases.
Mohammadi M.,et al.Mol. Cell. Biol. 11:5068-5078(1991).
Park D.J.,et al.J. Biol. Chem. 267:1496-1501(1992).