

**SWAP70 Antibody (aa1-50)**  
**Rabbit Polyclonal Antibody**  
**Catalog # ALS15244****Specification**

---

**SWAP70 Antibody (aa1-50) - Product Information**

Application	WB
Primary Accession	<a href="#">Q9UH65</a>
Reactivity	Human
Host	Rabbit
Clonality	Polyclonal
Calculated MW	69kDa KDa

**SWAP70 Antibody (aa1-50) - Additional Information****Gene ID** 23075**Other Names**

Switch-associated protein 70, SWAP-70, SWAP70, KIAA0640

**Target/Specificity**

Human SWAP70

**Reconstitution & Storage**

Store at 4°C for short term applications. For long term storage, aliquot and store at -20°C.

**Precautions**

SWAP70 Antibody (aa1-50) is for research use only and not for use in diagnostic or therapeutic procedures.

**SWAP70 Antibody (aa1-50) - Protein Information****Name** SWAP70**Synonyms** KIAA0640**Function**

Phosphatidylinositol 3,4,5-trisphosphate-dependent guanine nucleotide exchange factor (GEF) which, independently of RAS, transduces signals from tyrosine kinase receptors to RAC. It also mediates signaling of membrane ruffling. Regulates the actin cytoskeleton as an effector or adapter protein in response to agonist stimulated phosphatidylinositol (3,4)-bisphosphate production and cell protrusion (By similarity).

**Cellular Location**

Cytoplasm. Cell membrane. Nucleus. Cell projection, lamellipodium. Cytoplasm, cytoskeleton. Note=In resting B-cells it is localized mainly in the cytoplasm and upon cell activation it is recruited to the plasma membrane and then translocates to the nucleus (PubMed:10681448) In activated, class-switching B-cells it is associated with membrane IgG but not IgM

(PubMed:10681448). Localized to loose actin filament arrays located behind actively extending lamellipodia (PubMed:12925760).

#### Tissue Location

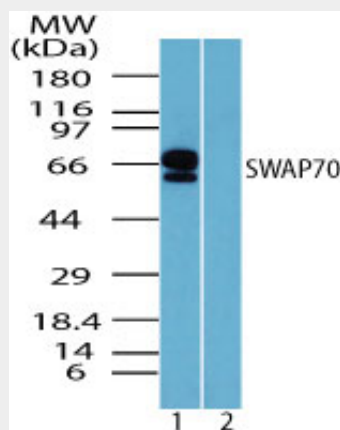
Expressed only in mature B-cells including those associated with mucosa-associated tissue and bronchus-associated tissue (PubMed:10681448). Widely expressed. Abundant in spleen, and fairly abundant in kidney, lung and liver. Also found in monocytes and macrophages (PubMed:12925760).

#### SWAP70 Antibody (aa1-50) - Protocols

Provided below are standard protocols that you may find useful for product applications.

- [Western Blot](#)
- [Blocking Peptides](#)
- [Dot Blot](#)
- [Immunohistochemistry](#)
- [Immunofluorescence](#)
- [Immunoprecipitation](#)
- [Flow Cytometry](#)
- [Cell Culture](#)

#### SWAP70 Antibody (aa1-50) - Images



Western blot of SWAP70 in human spleen lysate in the 1) absence and 2) presence of immunizing...

#### SWAP70 Antibody (aa1-50) - Background

Phosphatidylinositol 3,4,5-trisphosphate-dependent guanine nucleotide exchange factor (GEF) which, independently of RAS, transduces signals from tyrosine kinase receptors to RAC. It also mediates signaling of membrane ruffling. Regulates the actin cytoskeleton as an effector or adapter protein in response to agonist stimulated phosphatidylinositol (3,4)-bisphosphate production and cell protrusion (By similarity).

#### SWAP70 Antibody (aa1-50) - References

Masat L., et al. Proc. Natl. Acad. Sci. U.S.A. 97:2180-2184(2000).  
Rapalus L., et al. Clin. Immunol. 101:270-275(2001).  
Monz D.W., et al. Submitted (MAR-1999) to the EMBL/GenBank/DBJ databases.

Ishikawa K.,et al.DNA Res. 5:169-176(1998).

Mural R.J.,et al.Submitted (SEP-2005) to the EMBL/GenBank/DDBJ databases.