

**RAP2 Antibody (aa140-190)**  
**Rabbit Polyclonal Antibody**  
**Catalog # ALS15264****Specification**

---

**RAP2 Antibody (aa140-190) - Product Information**

Application	WB, IHC
Primary Accession	<a href="#">P10114</a>
Reactivity	Human, Mouse, Monkey, Chicken, Opossum, Horse, Xenopus, Dog
Host	Rabbit
Clonality	Polyclonal
Calculated MW	21kDa KDa

**RAP2 Antibody (aa140-190) - Additional Information****Gene ID** 5911**Other Names**

Ras-related protein Rap-2a, RbBP-30, RAP2A

**Target/Specificity**

Human RAP2A

**Reconstitution & Storage**

Store at 4°C for short term applications. For long term storage, aliquot and store at -20°C.

**Precautions**

RAP2 Antibody (aa140-190) is for research use only and not for use in diagnostic or therapeutic procedures.

**RAP2 Antibody (aa140-190) - Protein Information****Name** RAP2A**Function**

Small GTP-binding protein which cycles between a GDP-bound inactive and a GTP-bound active form. In its active form interacts with and regulates several effectors including MAP4K4, MINK1 and TNIK. Part of a signaling complex composed of NEDD4, RAP2A and TNIK which regulates neuronal dendrite extension and arborization during development. More generally, it is part of several signaling cascades and may regulate cytoskeletal rearrangements, cell migration, cell adhesion and cell spreading.

**Cellular Location**

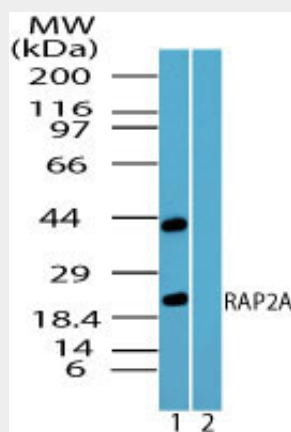
Recycling endosome membrane; Lipid-anchor; Cytoplasmic side. Midbody. Note=May also localize to the Golgi (PubMed:7962206) and the gelatinase-containing granules of neutrophils (PubMed:8391995). Colocalizes with RASGEF1B to midbody at telophase (PubMed:23894443).

## RAP2 Antibody (aa140-190) - Protocols

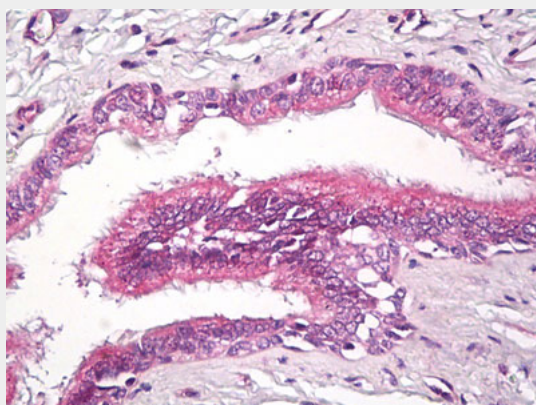
Provided below are standard protocols that you may find useful for product applications.

- [Western Blot](#)
- [Blocking Peptides](#)
- [Dot Blot](#)
- [Immunohistochemistry](#)
- [Immunofluorescence](#)
- [Immunoprecipitation](#)
- [Flow Cytometry](#)
- [Cell Culture](#)

## RAP2 Antibody (aa140-190) - Images



Western blot of RAP2A in MCF7 cell lysate in the 1) absence and 2) presence of immunizing...



Anti-RAP2 antibody IHC of human lung, respiratory epithelium.

## RAP2 Antibody (aa140-190) - Background

Small GTP-binding protein which cycles between a GDP-bound inactive and a GTP-bound active form. In its active form interacts with and regulates several effectors including MAP4K4, MINK1 and TNIK. Part of a signaling complex composed of NEDD4, RAP2A and TNIK which regulates neuronal dendrite extension and arborization during development. More generally, it is part of several signaling cascades and may regulate cytoskeletal rearrangements, cell migration, cell adhesion and cell spreading.

**RAP2 Antibody (aa140-190) - References**

Pizon V.,et al.Oncogene 3:201-204(1988).  
Fan Z.S.,et al.Submitted (NOV-1999) to the EMBL/GenBank/DDBJ databases.  
Puhl H.L. III,et al.Submitted (MAR-2002) to the EMBL/GenBank/DDBJ databases.  
Ota T.,et al.Nat. Genet. 36:40-45(2004).  
Dunham A.,et al.Nature 428:522-528(2004).