

**HSPB1 / HSP27 Antibody (aa50-100)**  
**Rabbit Polyclonal Antibody**  
**Catalog # ALS15269****Specification**

---

**HSPB1 / HSP27 Antibody (aa50-100) - Product Information**

Application	WB, IHC
Primary Accession	<a href="#">P04792</a>
Reactivity	Human, Horse, Dog
Host	Rabbit
Clonality	Polyclonal
Calculated MW	23kDa KDa

**HSPB1 / HSP27 Antibody (aa50-100) - Additional Information****Gene ID** 3315**Other Names**

Heat shock protein beta-1, HspB1, 28 kDa heat shock protein, Estrogen-regulated 24 kDa protein, Heat shock 27 kDa protein, HSP 27, Stress-responsive protein 27, SRP27, HSPB1, HSP27, HSP28

**Target/Specificity**

Human HSP27 / Heat Shock Protein 27

**Reconstitution & Storage**

Store at 4°C for short term applications. For long term storage, aliquot and store at -20°C.

**Precautions**

HSPB1 / HSP27 Antibody (aa50-100) is for research use only and not for use in diagnostic or therapeutic procedures.

**HSPB1 / HSP27 Antibody (aa50-100) - Protein Information****Name** HSPB1**Synonyms** HSP27, HSP28**Function**

Small heat shock protein which functions as a molecular chaperone probably maintaining denatured proteins in a folding- competent state (PubMed:<a href="http://www.uniprot.org/citations/10383393" target="\_blank">10383393</a>, PubMed:<a href="http://www.uniprot.org/citations/20178975" target="\_blank">20178975</a>). Plays a role in stress resistance and actin organization (PubMed:<a href="http://www.uniprot.org/citations/19166925" target="\_blank">19166925</a>). Through its molecular chaperone activity may regulate numerous biological processes including the phosphorylation and the axonal transport of neurofilament proteins (PubMed:<a href="http://www.uniprot.org/citations/23728742" target="\_blank">23728742</a>).

**Cellular Location**

Cytoplasm. Nucleus Cytoplasm, cytoskeleton, spindle Note=Cytoplasmic in interphase cells. Colocalizes with mitotic spindles in mitotic cells. Translocates to the nucleus during heat shock and resides in sub-nuclear structures known as SC35 speckles or nuclear splicing speckles.

**Tissue Location**

Detected in all tissues tested: skeletal muscle, heart, aorta, large intestine, small intestine, stomach, esophagus, bladder, adrenal gland, thyroid, pancreas, testis, adipose tissue, kidney, liver, spleen, cerebral cortex, blood serum and cerebrospinal fluid. Highest levels are found in the heart and in tissues composed of striated and smooth muscle.

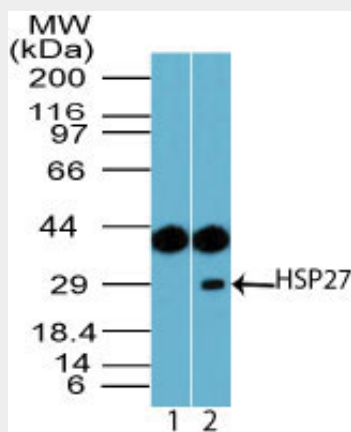
**Volume**

50  $\mu$ l

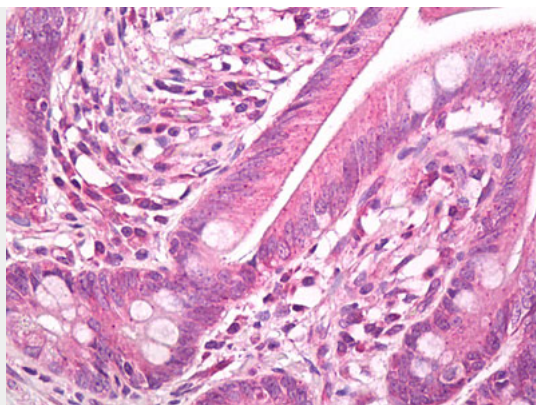
**HSPB1 / HSP27 Antibody (aa50-100) - Protocols**

Provided below are standard protocols that you may find useful for product applications.

- [Western Blot](#)
- [Blocking Peptides](#)
- [Dot Blot](#)
- [Immunohistochemistry](#)
- [Immunofluorescence](#)
- [Immunoprecipitation](#)
- [Flow Cytometry](#)
- [Cell Culture](#)

**HSPB1 / HSP27 Antibody (aa50-100) - Images**

Western blot of HSP27 in human skeletal muscle lysate using 1) preimmune sera at 1:5000 and 2)...



Anti-HSP27 / Heat Shock Protein 27 antibody IHC of human small intestine.

#### **HSPB1 / HSP27 Antibody (aa50-100) - Background**

Involved in stress resistance and actin organization.

#### **HSPB1 / HSP27 Antibody (aa50-100) - References**

Hickey E.,et al.Nucleic Acids Res. 14:4127-4145(1986).  
Carper S.W.,et al.Nucleic Acids Res. 18:6457-6457(1990).  
Hino M.,et al.Biochem. Biophys. Res. Commun. 271:164-169(2000).  
Briolay J.,et al.Submitted (JUN-1993) to the EMBL/GenBank/DDBJ databases.  
Yu W.,et al.Genome Res. 7:353-358(1997).