

NLRX1 Antibody (aa580-630)
Rabbit Polyclonal Antibody
Catalog # ALS15290**Specification**

NLRX1 Antibody (aa580-630) - Product Information

Application	WB, IHC
Primary Accession	Q86UT6
Reactivity	Human, Mouse, Rat, Monkey, Horse
Host	Rabbit
Clonality	Polyclonal
Calculated MW	108kDa KDa

NLRX1 Antibody (aa580-630) - Additional Information**Gene ID** 79671**Other Names**

NLR family member X1, Caterpillar protein 11.3, CLR11.3, Nucleotide-binding oligomerization domain protein 26, Nucleotide-binding oligomerization domain protein 5, Nucleotide-binding oligomerization domain protein 9, NLRX1, NOD26, NOD5, NOD9

Target/Specificity

Human NLRX1

Reconstitution & Storage

Store at 4°C for short term applications. For long term storage, aliquot and store at -20°C.

Precautions

NLRX1 Antibody (aa580-630) is for research use only and not for use in diagnostic or therapeutic procedures.

NLRX1 Antibody (aa580-630) - Protein Information**Name** NLRX1**Function**

Participates in antiviral signaling. Acts as a negative regulator of MAVS-mediated antiviral responses, through the inhibition of the virus-induced RLH (RIG-like helicase)-MAVS interaction (PubMed:18200010). Instead, promotes autophagy by interacting with TUFM and subsequently recruiting the autophagy-related proteins ATG5 and ATG12 (PubMed:22749352). Regulates also MAVS-dependent NLRP3 inflammasome activation to attenuate apoptosis (PubMed:27393910). Has no inhibitory function on NF-kappa-B signaling pathway, but enhances NF-kappa-B and JUN N-terminal kinase dependent signaling through the production of reactive oxygen species (PubMed:18219313). Regulates

viral mediated-inflammation and energy metabolism in a sex-dependent manner (By similarity). In females, prevents uncontrolled inflammation and energy metabolism and thus, may contribute to the sex differences observed in infectious and inflammatory diseases (By similarity).

Cellular Location

Mitochondrion outer membrane

Tissue Location

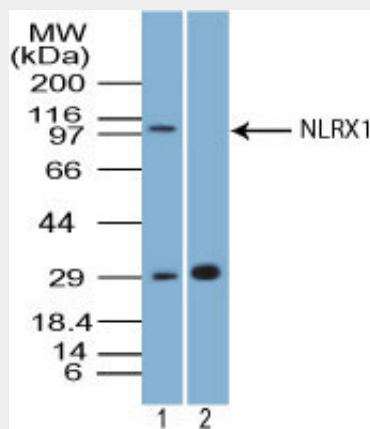
Ubiquitously expressed. Strongest expression in mammary gland, heart and muscle. Detected in HeLa, HEK293T, THP-1, HL- 60, Raji and Jurkat cell lines (at protein level)

NLRX1 Antibody (aa580-630) - Protocols

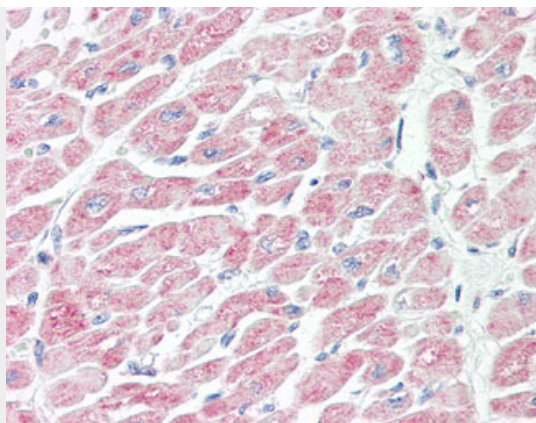
Provided below are standard protocols that you may find useful for product applications.

- [Western Blot](#)
- [Blocking Peptides](#)
- [Dot Blot](#)
- [Immunohistochemistry](#)
- [Immunofluorescence](#)
- [Immunoprecipitation](#)
- [Flow Cytometry](#)
- [Cell Culture](#)

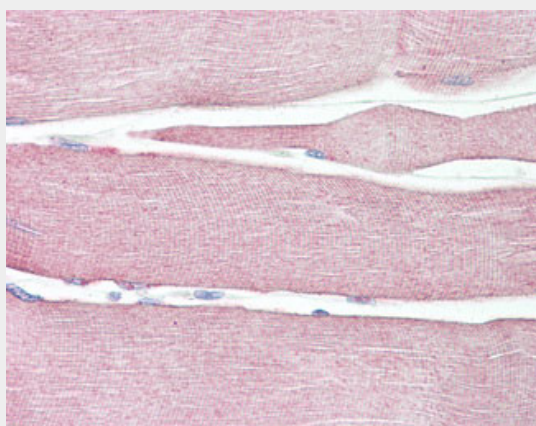
NLRX1 Antibody (aa580-630) - Images



Western blot of NLRX1 in mouse heart tissue lysate in the 1) absence and 2) presence of...



Anti-NLRX1 antibody IHC of human heart.



Anti-NLRX1 antibody IHC of human skeletal muscle.

NLRX1 Antibody (aa580-630) - Background

Participates in antiviral signaling. Acts as a negative regulator of MAVS-mediated antiviral responses, through the inhibition of the virus-induced RLH (RIG-like helicase)-MAVS interaction (PubMed:18200010). Has no inhibitory function on NF- Kappa-B and type 1 interferon signaling pathways, but enhances NF- Kappa-B and JUN N-terminal kinase dependent signaling through the production of reactive oxygen species (PubMed:18219313).

NLRX1 Antibody (aa580-630) - References

Inohara N.,et al.Nat. Rev. Immunol. 3:371-382(2003).
Kronos K.,et al.Submitted (FEB-2007) to the EMBL/GenBank/DDBJ databases.
Kubo T.,et al.Submitted (OCT-2002) to the EMBL/GenBank/DDBJ databases.
Ota T.,et al.Nat. Genet. 36:40-45(2004).
Inohara N.,et al.Annu. Rev. Biochem. 74:355-383(2005).