

**TPM3 Antibody (clone 2E4)**  
**Mouse Monoclonal Antibody**  
**Catalog # ALS15297****Specification**

---

**TPM3 Antibody (clone 2E4) - Product Information**

Application	IHC
Primary Accession	<a href="#">P06753</a>
Reactivity	Human
Host	Mouse
Clonality	Monoclonal
Calculated MW	33kDa KDa

**TPM3 Antibody (clone 2E4) - Additional Information****Gene ID** 7170**Other Names**

Tropomyosin alpha-3 chain, Gamma-tropomyosin, Tropomyosin-3, Tropomyosin-5, hTM5, TPM3

**Target/Specificity**

Human Tropomyosin Alpha-3

**Reconstitution & Storage**

Short term 4°C, long term aliquot and store at -20°C, avoid freeze thaw cycles.

**Precautions**

TPM3 Antibody (clone 2E4) is for research use only and not for use in diagnostic or therapeutic procedures.

**TPM3 Antibody (clone 2E4) - Protein Information****Name** TPM3**Function**

Binds to actin filaments in muscle and non-muscle cells. Plays a central role, in association with the troponin complex, in the calcium dependent regulation of vertebrate striated muscle contraction. Smooth muscle contraction is regulated by interaction with caldesmon. In non-muscle cells is implicated in stabilizing cytoskeleton actin filaments.

**Cellular Location**

Cytoplasm, cytoskeleton.

**Volume**

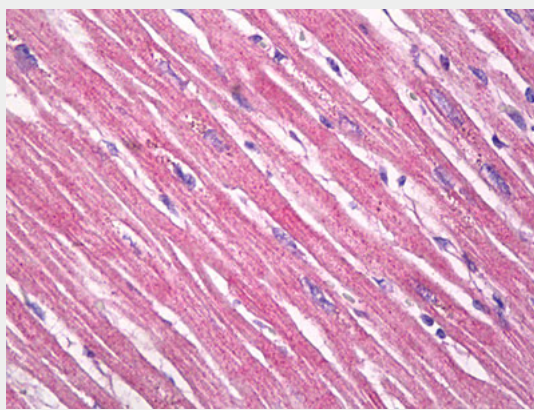
250 µl

### **TPM3 Antibody (clone 2E4) - Protocols**

Provided below are standard protocols that you may find useful for product applications.

- [Western Blot](#)
- [Blocking Peptides](#)
- [Dot Blot](#)
- [Immunohistochemistry](#)
- [Immunofluorescence](#)
- [Immunoprecipitation](#)
- [Flow Cytometry](#)
- [Cell Culture](#)

### **TPM3 Antibody (clone 2E4) - Images**



Anti-TPM3 antibody IHC of human heart.

### **TPM3 Antibody (clone 2E4) - Background**

Binds to actin filaments in muscle and non-muscle cells. Plays a central role, in association with the troponin complex, in the calcium dependent regulation of vertebrate striated muscle contraction. Smooth muscle contraction is regulated by interaction with caldesmon. In non-muscle cells is implicated in stabilizing cytoskeleton actin filaments.

### **TPM3 Antibody (clone 2E4) - References**

- Reinach F.C., et al. Nature 322:648-650(1986).  
McLeod A.R., et al. Nucleic Acids Res. 14:8413-8426(1986).  
Clayton L., et al. J. Mol. Biol. 201:507-515(1988).  
Lin J.J.-C., et al. Submitted (JUL-2000) to the EMBL/GenBank/DDBJ databases.  
Gregory S.G., et al. Nature 441:315-321(2006).