

**SOX3 Antibody (C-Terminus)**  
**Goat Polyclonal Antibody**  
**Catalog # ALS15377****Specification**

---

**SOX3 Antibody (C-Terminus) - Product Information**

Application	WB, IHC
Primary Accession	<a href="#">P41225</a>
Reactivity	Human, Mouse, Rabbit, Monkey
Host	Goat
Clonality	Polyclonal
Calculated MW	45kDa KDa

**SOX3 Antibody (C-Terminus) - Additional Information****Gene ID** 6658**Other Names**

Transcription factor SOX-3, SOX3

**Target/Specificity**

Human SOX3.

**Reconstitution & Storage**

Store at -20°C. Minimize freezing and thawing.

**Precautions**

SOX3 Antibody (C-Terminus) is for research use only and not for use in diagnostic or therapeutic procedures.

**SOX3 Antibody (C-Terminus) - Protein Information****Name** SOX3**Function**

Transcription factor required during the formation of the hypothalamo-pituitary axis. May function as a switch in neuronal development. Keeps neural cells undifferentiated by counteracting the activity of proneural proteins and suppresses neuronal differentiation. Required also within the pharyngeal epithelia for craniofacial morphogenesis. Controls a genetic switch in male development. Is necessary for initiating male sex determination by directing the development of supporting cell precursors (pre-Sertoli cells) as Sertoli rather than granulosa cells (By similarity).

**Cellular Location**

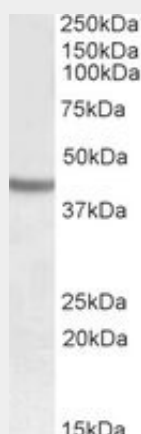
Nucleus.

**SOX3 Antibody (C-Terminus) - Protocols**

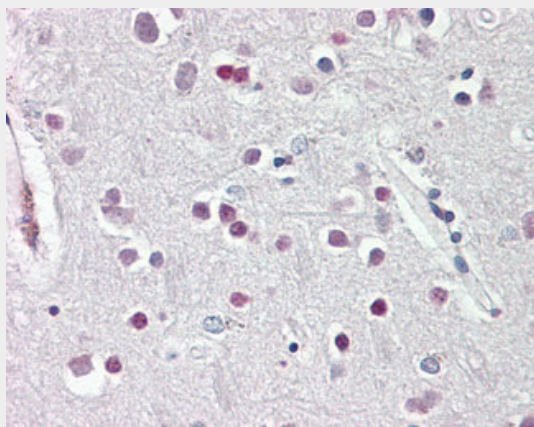
Provided below are standard protocols that you may find useful for product applications.

- [Western Blot](#)
- [Blocking Peptides](#)
- [Dot Blot](#)
- [Immunohistochemistry](#)
- [Immunofluorescence](#)
- [Immunoprecipitation](#)
- [Flow Cytometry](#)
- [Cell Culture](#)

#### **SOX3 Antibody (C-Terminus) - Images**



SOX3 antibody (0.5 ug/ml) staining of Human Cerebral Cortex lysate (35 ug protein/ml in RIPA buffer).



Anti-SOX3 antibody IHC of human brain, cortex.

#### **SOX3 Antibody (C-Terminus) - Background**

Transcription factor required during the formation of the hypothalamo-pituitary axis. May function as a switch in neuronal development. Keeps neural cells undifferentiated by counteracting the activity of proneural proteins and suppresses neuronal differentiation. Required also within the pharyngeal epithelia for craniofacial morphogenesis. Controls a genetic switch in male development. Is necessary for initiating male sex determination by directing the development of supporting cell precursors (pre-Sertoli cells) as Sertoli rather than granulosa cells (By similarity).

#### **SOX3 Antibody (C-Terminus) - References**

Stevanovic M.,et al.Hum. Mol. Genet. 2:2013-2018(1993).  
Gorry M.C.,et al.Submitted (MAY-2000) to the EMBL/GenBank/DDBJ databases.  
Ross M.T.,et al.Nature 434:325-337(2005).  
Denny P.,et al.Nucleic Acids Res. 20:2887-2887(1992).  
Sutton E.,et al.J. Clin. Invest. 121:328-341(2011).