

AHSA1/AHSA2 Antibody
Rabbit Polyclonal Antibody
Catalog # ALS15467**Specification**

AHSA1/AHSA2 Antibody - Product Information

Application	IHC
Primary Accession	O95433
Other Accession	Q719I0
Reactivity	Human, Mouse, Rat
Host	Rabbit
Clonality	Polyclonal

AHSA1/AHSA2 Antibody - Additional Information**Gene ID** 10598**Other Names**

Activator of 90 kDa heat shock protein ATPase homolog 1, AHA1, p38, AHSA1, C14orf3

Target/Specificity

Cross reacts with Aha1.

Reconstitution & Storage

Short term 4°C, long term aliquot and store at -20°C, avoid freeze thaw cycles.

Precautions

AHSA1/AHSA2 Antibody is for research use only and not for use in diagnostic or therapeutic procedures.

AHSA1/AHSA2 Antibody - Protein Information**Name** AHSA1**Synonyms** C14orf3**Function**

Acts as a co-chaperone of HSP90AA1 (PubMed:29127155). Activates the ATPase activity of HSP90AA1 leading to increase in its chaperone activity (PubMed:29127155). Competes with the inhibitory co- chaperone FNIP1 for binding to HSP90AA1, thereby providing a reciprocal regulatory mechanism for chaperoning of client proteins (PubMed:27353360). Competes with the inhibitory co-chaperone TSC1 for binding to HSP90AA1, thereby providing a reciprocal regulatory mechanism for chaperoning of client proteins (PubMed:29127155).

Cellular Location

Cytoplasm, cytosol. Endoplasmic reticulum. Note=May transiently interact with the endoplasmic reticulum

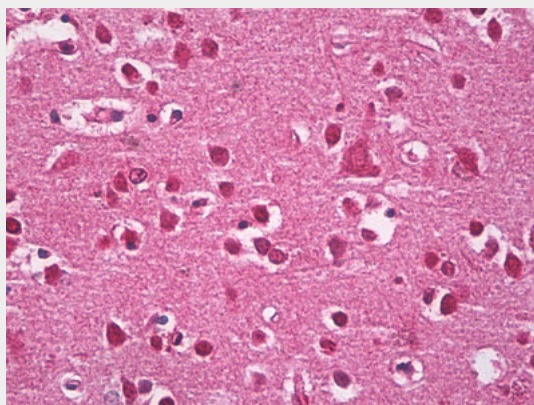
Tissue Location

Expressed in numerous tissues, including brain, heart, skeletal muscle and kidney and, at lower levels, liver and placenta.

AHSA1/AHSA2 Antibody - Protocols

Provided below are standard protocols that you may find useful for product applications.

- [Western Blot](#)
- [Blocking Peptides](#)
- [Dot Blot](#)
- [Immunohistochemistry](#)
- [Immunofluorescence](#)
- [Immunoprecipitation](#)
- [Flow Cytometry](#)
- [Cell Culture](#)

AHSA1/AHSA2 Antibody - Images

Anti-AHSA1/AHSA2 antibody IHC of human brain, cortex neurons.