

STAT5A Antibody
Rabbit Polyclonal Antibody
Catalog # ALS15575**Specification**

STAT5A Antibody - Product Information

Application	IHC, WB
Primary Accession	P42229
Reactivity	Human, Mouse, Rat, Pig, Bovine
Host	Rabbit
Clonality	Polyclonal
Calculated MW	91kDa KDa

STAT5A Antibody - Additional Information**Gene ID** 6776**Other Names**

Signal transducer and activator of transcription 5A, STAT5A, STAT5

Target/Specificity

The antibody recognizes ~95 kD Stat5 of human, mouse and rat origins. Reactivity to other species has not been tested.

Reconstitution & Storage

Short term +4°C (no longer than one week); Long term -20°C; Aliquot to avoid freeze/thaw cycles.

Precautions

STAT5A Antibody is for research use only and not for use in diagnostic or therapeutic procedures.

STAT5A Antibody - Protein Information**Name** STAT5A**Synonyms** STAT5**Function**

Carries out a dual function: signal transduction and activation of transcription. Mediates cellular responses to the cytokine KITLG/SCF and other growth factors. Mediates cellular responses to ERBB4. May mediate cellular responses to activated FGFR1, FGFR2, FGFR3 and FGFR4. Binds to the GAS element and activates PRL- induced transcription. Regulates the expression of milk proteins during lactation.

Cellular Location

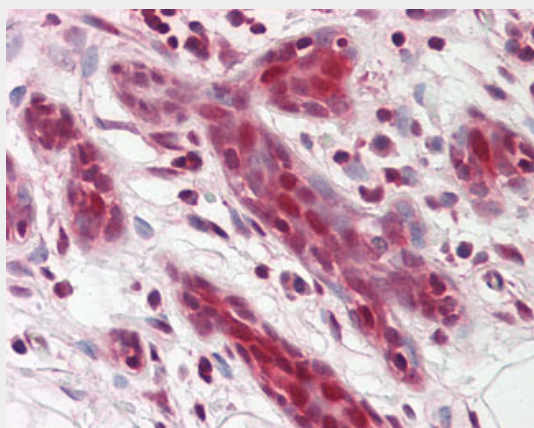
Cytoplasm. Nucleus. Note=Translocated into the nucleus in response to phosphorylation

STAT5A Antibody - Protocols

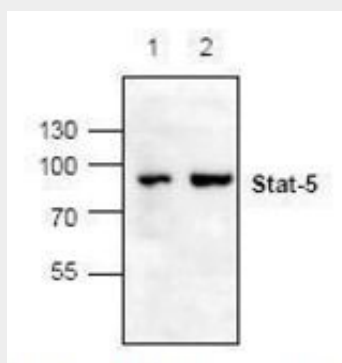
Provided below are standard protocols that you may find useful for product applications.

- [Western Blot](#)
- [Blocking Peptides](#)
- [Dot Blot](#)
- [Immunohistochemistry](#)
- [Immunofluorescence](#)
- [Immunoprecipitation](#)
- [Flow Cytometry](#)
- [Cell Culture](#)

STAT5A Antibody - Images



Anti-STAT5A antibody IHC staining of human breast.



Western blot of 3T3 cell lysate (Lane 1) and rat kidney tissue lysate (Lane 2) with STAT5A /...

STAT5A Antibody - Background

Carries out a dual function: signal transduction and activation of transcription. Mediates cellular responses to the cytokine KITLG/SCF and other growth factors. Mediates cellular responses to ERBB4. May mediate cellular responses to activated FGFR1, FGFR2, FGFR3 and FGFR4. Binds to the GAS element and activates PRL-induced transcription. Regulates the expression of milk proteins during lactation.

STAT5A Antibody - References

Hou J., et al. Immunity 2:321-329(1995).

Lin J.X.,et al.Submitted (DEC-1995) to the EMBL/GenBank/DDBJ databases.
Tan D.,et al.Submitted (APR-2006) to the EMBL/GenBank/DDBJ databases.
Ota T.,et al.Nat. Genet. 36:40-45(2004).
Zody M.C.,et al.Nature 440:1045-1049(2006).