

**MLIP Antibody (C-Terminus)**  
**Rabbit Polyclonal Antibody**  
**Catalog # ALS15598****Specification**

---

**MLIP Antibody (C-Terminus) - Product Information**

Application	IHC, IF, WB
Primary Accession	<a href="#">Q5VWP3</a>
Reactivity	Human
Host	Rabbit
Clonality	Polyclonal
Calculated MW	50kDa KDa

**MLIP Antibody (C-Terminus) - Additional Information****Gene ID** 90523**Other Names**

Muscular LMNA-interacting protein, Muscular-enriched A-type laminin-interacting protein, MLIP, C6orf142

**Target/Specificity**

Human MLIP. At least three isoforms of MLIP are known to exist.

**Reconstitution & Storage**

Long term: -20°C; Short term: +4°C. Avoid repeat freeze-thaw cycles.

**Precautions**

MLIP Antibody (C-Terminus) is for research use only and not for use in diagnostic or therapeutic procedures.

**MLIP Antibody (C-Terminus) - Protein Information****Name** MLIP ([HGNC:21355](#))**Function**

Required for myoblast differentiation into myotubes, possibly acting as a transcriptional regulator of the myogenic program (By similarity). Required for cardiac adaptation to stress through integrated regulation of the AKT/mTOR pathways and FOXO1. Regulates cardiac homeostasis and plays a role in the protection against cardiac hypertrophy (By similarity). Binds chromatin (By similarity). May act as a transcriptional cofactor for ISL1, repressing its transcriptional activity (By similarity). May also repress MYOCD transcriptional activity (By similarity).

**Cellular Location**

Nucleus. Nucleus envelope {ECO:0000250|UniProtKB:Q5FW52}. Nucleus, PML body {ECO:0000250|UniProtKB:Q5FW52}. Cytoplasm, cytosol. Cell membrane, sarcolemma {ECO:0000250|UniProtKB:Q5FW52}; Peripheral membrane protein {ECO:0000250|UniProtKB:Q5FW52}; Cytoplasmic side {ECO:0000250|UniProtKB:Q5FW52}

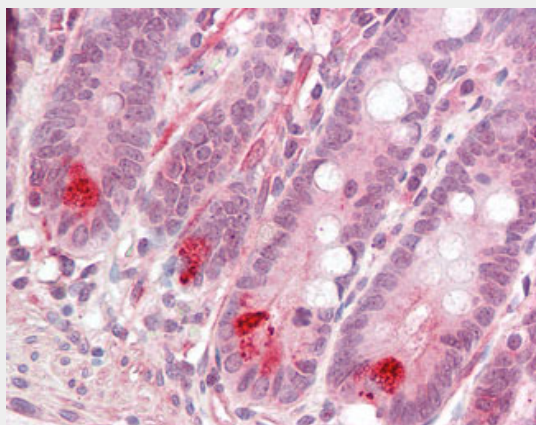
**Tissue Location**

Predominantly expressed in the heart and skeletal muscle (PubMed:21498514, PubMed:26436652, PubMed:34581780). Also detected in liver (PubMed:21498514). [Isoform 3]: Expressed in skeletal muscle.

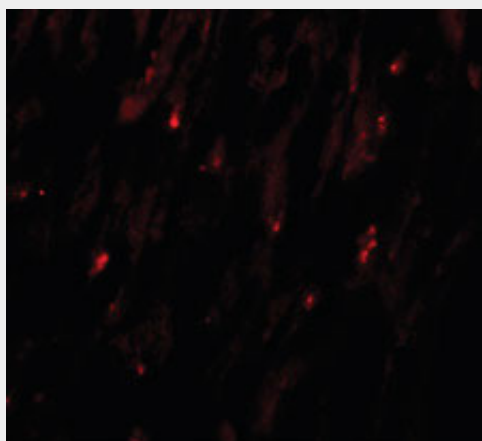
**MLIP Antibody (C-Terminus) - Protocols**

Provided below are standard protocols that you may find useful for product applications.

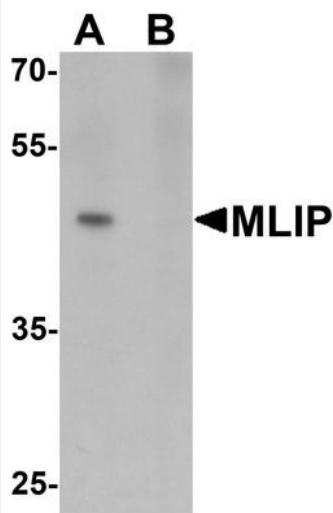
- [Western Blot](#)
- [Blocking Peptides](#)
- [Dot Blot](#)
- [Immunohistochemistry](#)
- [Immunofluorescence](#)
- [Immunoprecipitation](#)
- [Flow Cytometry](#)
- [Cell Culture](#)

**MLIP Antibody (C-Terminus) - Images**

Anti-MLIP antibody IHC staining of human small intestine.



Immunofluorescence of MLIP in human heart tissue with MLIP antibody at 20 ug/ml.



#### MLIP Antibody (C-Terminus) - References

- Ota T.,et al.Nat. Genet. 36:40-45(2004).  
Mungall A.J.,et al.Nature 425:805-811(2003).  
Ahmady E.,et al.J. Biol. Chem. 286:19702-19713(2011).