

SDHAF1 Antibody (C-Terminus)
Rabbit Polyclonal Antibody
Catalog # ALS15626**Specification**

SDHAF1 Antibody (C-Terminus) - Product Information

Application	IHC, ICC, IF, WB
Primary Accession	A6NFY7
Reactivity	Human
Host	Rabbit
Clonality	Polyclonal
Calculated MW	13kDa KDa

SDHAF1 Antibody (C-Terminus) - Additional Information**Gene ID** 644096**Other Names**

Succinate dehydrogenase assembly factor 1, mitochondrial, SDH assembly factor 1, SDHAF1, LYR motif-containing protein 8, SDHF1

Target/Specificity

Human SDHAF1. SDHAF1 antibody is predicted to not cross-react with other SDHAF protein family members.

Reconstitution & Storage

Store at -20°C. Aliquot to avoid freeze/thaw cycles.

Precautions

SDHAF1 Antibody (C-Terminus) is for research use only and not for use in diagnostic or therapeutic procedures.

SDHAF1 Antibody (C-Terminus) - Protein Information**Name** SDHAF1 {ECO:0000303|PubMed:19465911, ECO:0000312|HGNC:HGNC:33867}**Function**

Plays an essential role in the assembly of succinate dehydrogenase (SDH), an enzyme complex (also referred to as respiratory complex II) that is a component of both the tricarboxylic acid (TCA) cycle and the mitochondrial electron transport chain, and which couples the oxidation of succinate to fumarate with the reduction of ubiquinone (coenzyme Q) to ubiquinol (PubMed:24954417, PubMed:19465911). Promotes maturation of the iron-sulfur protein subunit SDHB of the SDH catalytic dimer, protecting it from the deleterious effects of oxidants (PubMed:24954417). May act together with SDHAF3 (PubMed:24954417). Contributes to iron-sulfur cluster incorporation into SDHB by binding to SDHB and recruiting the iron-sulfur

transfer complex formed by HSC20, HSPA9 and ISCU through direct binding to HSC20 (PubMed:26749241).

Cellular Location

Mitochondrion matrix

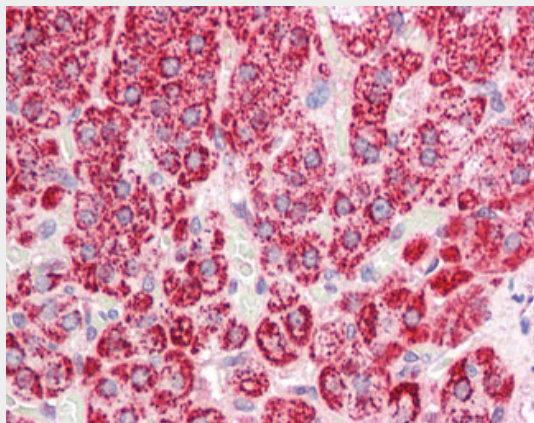
Tissue Location

Ubiquitously expressed.

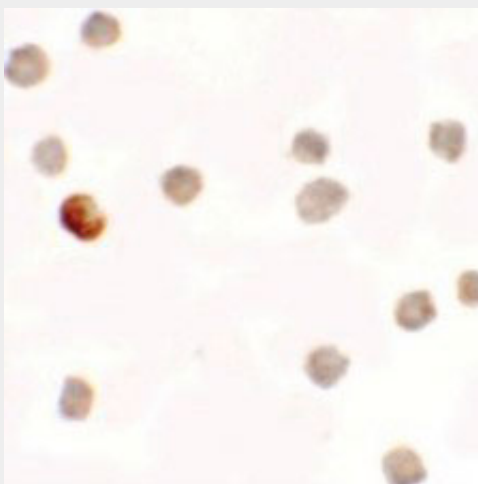
SDHAF1 Antibody (C-Terminus) - Protocols

Provided below are standard protocols that you may find useful for product applications.

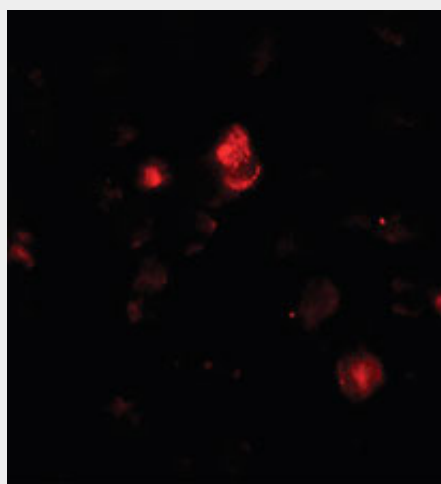
- [Western Blot](#)
- [Blocking Peptides](#)
- [Dot Blot](#)
- [Immunohistochemistry](#)
- [Immunofluorescence](#)
- [Immunoprecipitation](#)
- [Flow Cytometry](#)
- [Cell Culture](#)

SDHAF1 Antibody (C-Terminus) - Images

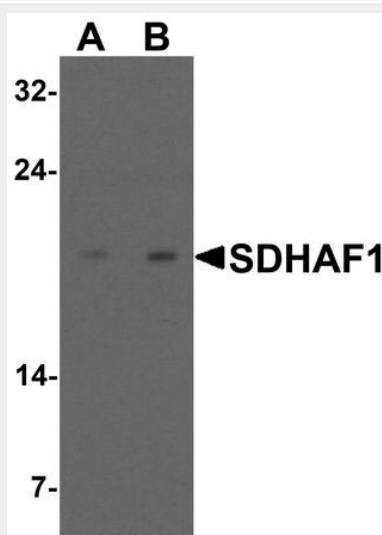
Anti-SDHAF1 antibody IHC staining of human adrenal.



Immunocytochemistry of SDHAF1 in 3T3 cells with SDHAF1 antibody at 5 ug/ml.



Immunofluorescence of SDHAF1 in 3T3 cells with SDHAF1 antibody at 20 ug/ml.



Western blot analysis of SDHAF1 in 3T3 cell lysate with SDHAF1 antibody at (A) 1 and (B) 2 ug/ml.

SDHAF1 Antibody (C-Terminus) - Background

Plays an essential role in the assembly of succinate dehydrogenase (SDH), an enzyme complex (also referred to as respiratory complex II) that is a component of both the tricarboxylic acid (TCA) cycle and the mitochondrial electron transport chain, and which couples the oxidation of succinate to fumarate with the reduction of ubiquinone (coenzyme Q) to ubiquinol. Promotes maturation of the iron-sulfur protein subunit SDHB of the SDH catalytic dimer, protecting it from the deleterious effects of oxidants. May act together with SDHAF3.

SDHAF1 Antibody (C-Terminus) - References

Grimwood J.,et al.Nature 428:529-535(2004).
Ghezzi D.,et al.Nat. Genet. 41:654-656(2009).
Na U.,et al.Cell Metab. 20:253-266(2014).