

**CENPW / C6orf173 Antibody (N-Terminus)**  
**Rabbit Polyclonal Antibody**  
**Catalog # ALS15639****Specification**

---

**CENPW / C6orf173 Antibody (N-Terminus) - Product Information**

Application	IHC, WB
Primary Accession	<a href="#">Q5EE01</a>
Reactivity	Human
Host	Rabbit
Clonality	Polyclonal
Calculated MW	10kDa KDa

**CENPW / C6orf173 Antibody (N-Terminus) - Additional Information****Gene ID** 387103**Other Names**

Centromere protein W, CENP-W, Cancer-up-regulated gene 2 protein, CENPW, C6orf173, CUG2

**Target/Specificity**

Human CENPW / C6orf173. At least three isoforms of CENPW are known to exist; this antibody will detect all three isoforms.

**Reconstitution & Storage**

Long term: -20°C; Short term: +4°C. Avoid repeat freeze-thaw cycles.

**Precautions**

CENPW / C6orf173 Antibody (N-Terminus) is for research use only and not for use in diagnostic or therapeutic procedures.

**CENPW / C6orf173 Antibody (N-Terminus) - Protein Information****Name** CENPW**Synonyms** C6orf173, CUG2**Function**

Component of the CENPA-NAC (nucleosome-associated) complex, a complex that plays a central role in assembly of kinetochore proteins, mitotic progression and chromosome segregation (By similarity). The CENPA-NAC complex recruits the CENPA-CAD (nucleosome distal) complex and may be involved in incorporation of newly synthesized CENPA into centromeres (By similarity). Part of a nucleosome-associated complex that binds specifically to histone H3-containing nucleosomes at the centromere, as opposed to nucleosomes containing CENPA. Component of the heterotetrameric CENP-T-W-S-X complex that binds and supercoils DNA, and plays an important role in kinetochore assembly. CENPW has a fundamental role in kinetochore assembly and function. It is one of the inner kinetochore proteins, with most further proteins binding downstream. Required for normal chromosome organization and normal progress through mitosis.

**Cellular Location**

Nucleus. Chromosome, centromere. Chromosome, centromere, kinetochore. Nucleus matrix. Nucleus, nucleolus. Note=Constitutively localizes to centromeres throughout the cell cycle, and to the inner kinetochore during mitosis. {ECO:0000250|UniProtKB:P0DJH6}

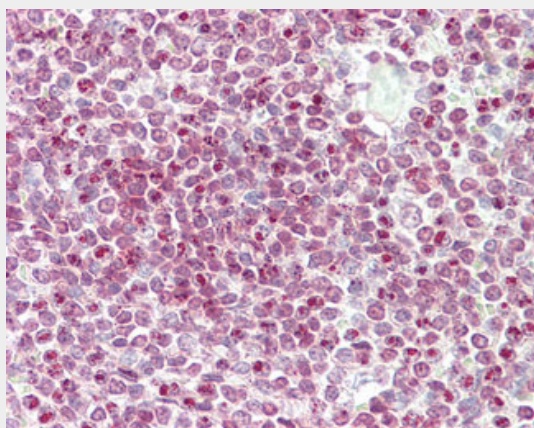
**Tissue Location**

Highly expressed in ovary, liver, lung and pancreas and to a lower extent in breast and gastrointestinal tract cancers; such as those of the colon, rectum and stomach. Overexpressed in high grade breast invasive tumors. Expressed in many cancer cell types

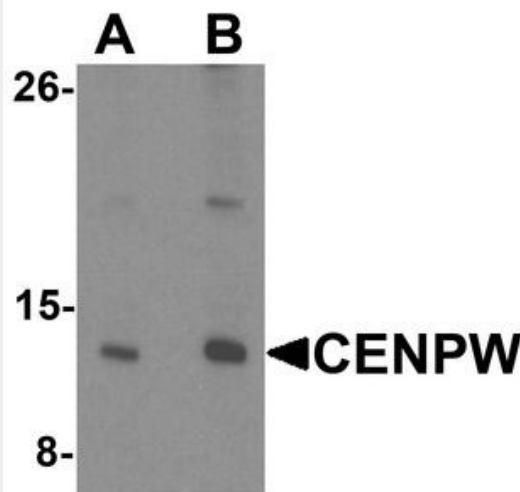
**CENPW / C6orf173 Antibody (N-Terminus) - Protocols**

Provided below are standard protocols that you may find useful for product applications.

- [Western Blot](#)
- [Blocking Peptides](#)
- [Dot Blot](#)
- [Immunohistochemistry](#)
- [Immunofluorescence](#)
- [Immunoprecipitation](#)
- [Flow Cytometry](#)
- [Cell Culture](#)

**CENPW / C6orf173 Antibody (N-Terminus) - Images**

Anti-CENPW / C6orf173 antibody IHC staining of human spleen.



Western blot analysis of CENPW in HeLa cell lysate with CENPW antibody at (A) 0.5 and (B)...

#### **CENPW / C6orf173 Antibody (N-Terminus) - Background**

Component of the CENPA-NAC (nucleosome-associated) complex, a complex that plays a central role in assembly of kinetochore proteins, mitotic progression and chromosome segregation (By similarity). The CENPA-NAC complex recruits the CENPA-CAD (nucleosome distal) complex and may be involved in incorporation of newly synthesized CENPA into centromeres (By similarity). Part of a nucleosome-associated complex that binds specifically to histone H3-containing nucleosomes at the centromere, as opposed to nucleosomes containing CENPA. Component of the heterotetrameric CENP-T-W-S-X complex that binds and supercoils DNA, and plays an important role in kinetochore assembly. CENPW has a fundamental role in kinetochore assembly and function. It is one of the inner kinetochore proteins, with most further proteins binding downstream. Required for normal chromosome organization and normal progress through mitosis.

#### **CENPW / C6orf173 Antibody (N-Terminus) - References**

Lee S.,et al.Biochem. Biophys. Res. Commun. 360:633-639(2007).  
Mungall A.J.,et al.Nature 425:805-811(2003).  
Mural R.J.,et al.Submitted (SEP-2005) to the EMBL/GenBank/DDBJ databases.  
Ivshina A.V.,et al.Cancer Res. 66:10292-10301(2006).  
Hori T.,et al.Cell 135:1039-1052(2008).