

**CRIM1 Antibody (C-Terminus)**  
**Rabbit Polyclonal Antibody**  
**Catalog # ALS15643****Specification**

---

**CRIM1 Antibody (C-Terminus) - Product Information**

Application	IHC, IF, WB
Primary Accession	<a href="#">O9NZV1</a>
Reactivity	Human
Host	Rabbit
Clonality	Polyclonal
Calculated MW	114kDa KDa

**CRIM1 Antibody (C-Terminus) - Additional Information****Gene ID** 51232**Other Names**

Cysteine-rich motor neuron 1 protein, CRIM-1, Cysteine-rich repeat-containing protein S52, Processed cysteine-rich motor neuron 1 protein, CRIM1, S52

**Target/Specificity**

Human CRIM1. CRIM1 antibody is human reactive. CRIM1 antibody is predicted to not cross-react with CRIM2.

**Reconstitution & Storage**

Store at -20°C. Aliquot to avoid freeze/thaw cycles.

**Precautions**

CRIM1 Antibody (C-Terminus) is for research use only and not for use in diagnostic or therapeutic procedures.

**CRIM1 Antibody (C-Terminus) - Protein Information****Name** CRIM1**Synonyms** S52**Function**

May play a role in CNS development by interacting with growth factors implicated in motor neuron differentiation and survival. May play a role in capillary formation and maintenance during angiogenesis. Modulates BMP activity by affecting its processing and delivery to the cell surface.

**Cellular Location**

[Processed cysteine-rich motor neuron 1 protein]: Secreted

**Tissue Location**

Expressed in pancreas, kidney, skeletal muscle, lung, placenta, brain, heart, spleen, liver and

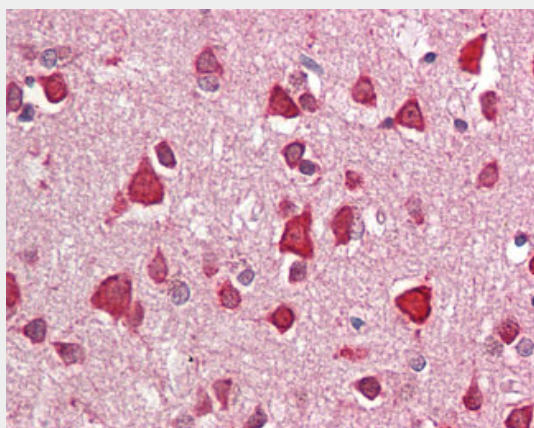
small intestine Expressed in blood vessels (at protein level)

### **CRIM1 Antibody (C-Terminus) - Protocols**

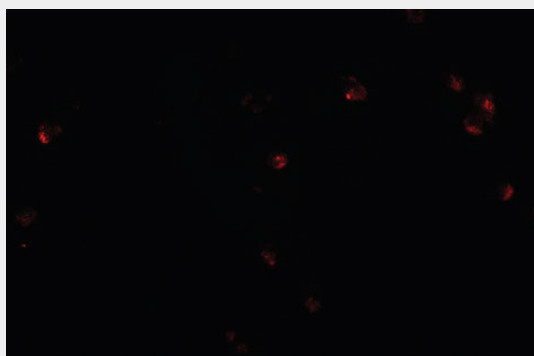
Provided below are standard protocols that you may find useful for product applications.

- [Western Blot](#)
- [Blocking Peptides](#)
- [Dot Blot](#)
- [Immunohistochemistry](#)
- [Immunofluorescence](#)
- [Immunoprecipitation](#)
- [Flow Cytometry](#)
- [Cell Culture](#)

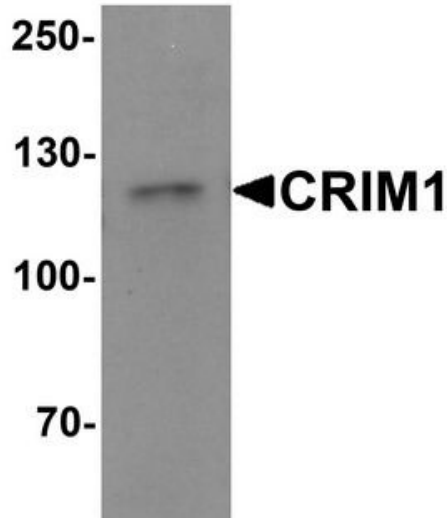
### **CRIM1 Antibody (C-Terminus) - Images**



Anti-CRIM1 antibody IHC staining of human brain, cortex.



Immunofluorescence of CRIM1 in Jurkat cells with CRIM1 antibody at 20 ug/ml.



Western blot analysis of CRIM1 in Jurkat cell lysate with Crim1 antibody at 1 ug/ml.

#### **CRIM1 Antibody (C-Terminus) - Background**

May play a role in CNS development by interacting with growth factors implicated in motor neuron differentiation and survival. May play a role in capillary formation and maintenance during angiogenesis. Modulates BMP activity by affecting its processing and delivery to the cell surface.

#### **CRIM1 Antibody (C-Terminus) - References**

Kolle G.V., et al. Mech. Dev. 90:181-193(2000).  
Totoki Y., et al. Submitted (MAR-2005) to the EMBL/GenBank/DDBJ databases.  
Clark H.F., et al. Genome Res. 13:2265-2270(2003).  
Wilkinson L., et al. J. Biol. Chem. 278:34181-34188(2003).  
Zhang Z., et al. Protein Sci. 13:2819-2824(2004).