

SHQ1 Antibody (N-Terminus)
Rabbit Polyclonal Antibody
Catalog # ALS15659**Specification**

SHQ1 Antibody (N-Terminus) - Product Information

Application	IHC, IF
Primary Accession	Q6PI26
Reactivity	Human
Host	Rabbit
Clonality	Polyclonal
Calculated MW	65kDa KDa

SHQ1 Antibody (N-Terminus) - Additional Information**Gene ID** 55164**Other Names**

Protein SHQ1 homolog, SHQ1

Target/Specificity

Human SHQ1. Multiple isoforms are known to exist.

Reconstitution & Storage

Long term: -20°C; Short term: +4°C. Avoid repeat freeze-thaw cycles.

Precautions

SHQ1 Antibody (N-Terminus) is for research use only and not for use in diagnostic or therapeutic procedures.

SHQ1 Antibody (N-Terminus) - Protein Information**Name** SHQ1**Function**

Required for the quantitative accumulation of H/ACA ribonucleoproteins (RNPs), including telomerase, probably through the stabilization of DKC1, from the time of its synthesis until its association with NOP10, NHP2, and NAF1 at the nascent H/ACA RNA.

Cellular Location

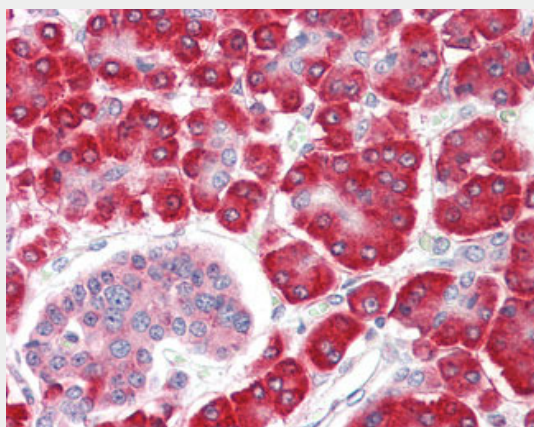
Cytoplasm, cytosol. Nucleus, nucleoplasm. Note=May at least partially shuttle between cytosol and nucleoplasm. In the nucleoplasm, exhibits a granular pattern, but is excluded from nucleoli and Cajal bodies. Absent from most H/ACA-box RNA transcription sites

SHQ1 Antibody (N-Terminus) - Protocols

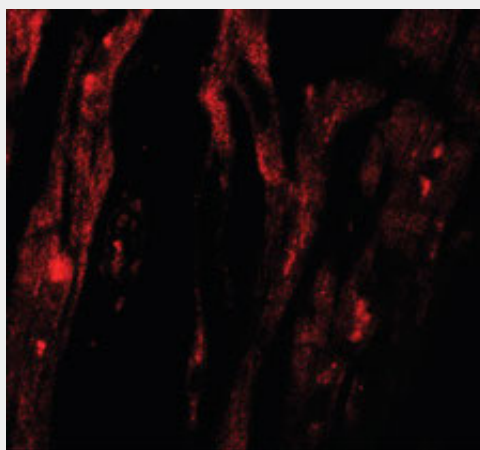
Provided below are standard protocols that you may find useful for product applications.

- [Western Blot](#)
- [Blocking Peptides](#)
- [Dot Blot](#)
- [Immunohistochemistry](#)
- [Immunofluorescence](#)
- [Immunoprecipitation](#)
- [Flow Cytometry](#)
- [Cell Culture](#)

SHQ1 Antibody (N-Terminus) - Images



Anti-SHQ1 antibody IHC staining of human pancreas.



Immunofluorescence of SHQ1 in human heart tissue with SHQ1 antibody at 20 ug/ml.

SHQ1 Antibody (N-Terminus) - Background

Required for the quantitative accumulation of H/ACA ribonucleoproteins (RNPs), including telomerase, probably through the stabilization of DKC1, from the time of its synthesis until its association with NOP10, NHP2, and NAF1 at the nascent H/ACA RNA.

SHQ1 Antibody (N-Terminus) - References

Ota T., et al. Nat. Genet. 36:40-45(2004).
Muzny D.M., et al. Nature 440:1194-1198(2006).
Bechtel S., et al. BMC Genomics 8:399-399(2007).

Grozdanov P.N.,et al.RNA 15:1188-1197(2009).