

LNPEP Antibody (C-Terminus)
Rabbit Polyclonal Antibody
Catalog # ALS15667**Specification**

LNPEP Antibody (C-Terminus) - Product Information

Application	IHC, IF, WB
Primary Accession	O9UIQ6
Reactivity	Human
Host	Rabbit
Clonality	Polyclonal
Calculated MW	117kDa KDa

LNPEP Antibody (C-Terminus) - Additional Information**Gene ID** 4012**Other Names**

Leucyl-cystinyl aminopeptidase, Cystinyl aminopeptidase, 3.4.11.3, Insulin-regulated membrane aminopeptidase, Insulin-responsive aminopeptidase, IRAP, Oxytocinase, OTase, Placental leucine aminopeptidase, P-LAP, Leucyl-cystinyl aminopeptidase, pregnancy serum form, LNPEP, OTASE

Target/Specificity

Human LNPEP. At least three isoforms are known to exist; this antibody will detect all three isoforms. Despite its predicted molecular weight, LNPEP often migrates at 165kD in SDS-PAGE.

Reconstitution & Storage

Long term: -20°C; Short term: +4°C. Avoid repeat freeze-thaw cycles.

Precautions

LNPEP Antibody (C-Terminus) is for research use only and not for use in diagnostic or therapeutic procedures.

LNPEP Antibody (C-Terminus) - Protein Information**Name** LNPEP**Synonyms** OTASE**Function**

Release of an N-terminal amino acid, cleaves before cysteine, leucine as well as other amino acids. Degrades peptide hormones such as oxytocin, vasopressin and angiotensin III, and plays a role in maintaining homeostasis during pregnancy. May be involved in the inactivation of neuronal peptides in the brain. Cleaves Met-enkephalin and dynorphin. Binds angiotensin IV and may be the angiotensin IV receptor in the brain.

Cellular Location

Cell membrane; Single-pass type II membrane protein Note=In brain only the membrane-bound

form is found. The protein resides in intracellular vesicles together with GLUT4 and can then translocate to the cell surface in response to insulin and/or oxytocin. Localization may be determined by dileucine internalization motifs, and/or by interaction with tankyrases.

Tissue Location

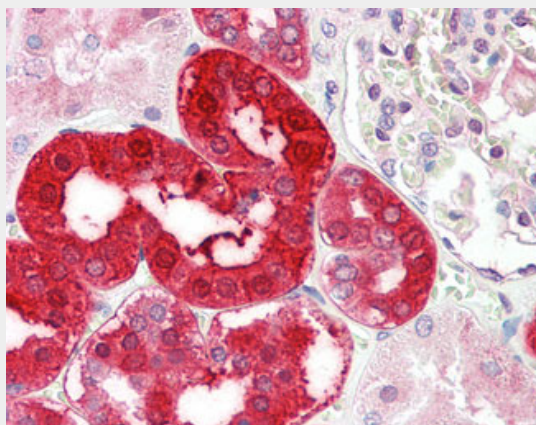
Highly expressed in placenta, heart, kidney and small intestine. Detected at lower levels in neuronal cells in the brain, in skeletal muscle, spleen, liver, testes and colon.

LNPEP Antibody (C-Terminus) - Protocols

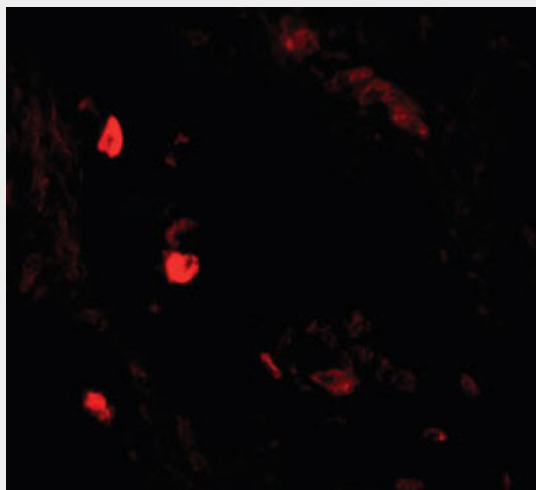
Provided below are standard protocols that you may find useful for product applications.

- [Western Blot](#)
- [Blocking Peptides](#)
- [Dot Blot](#)
- [Immunohistochemistry](#)
- [Immunofluorescence](#)
- [Immunoprecipitation](#)
- [Flow Cytometry](#)
- [Cell Culture](#)

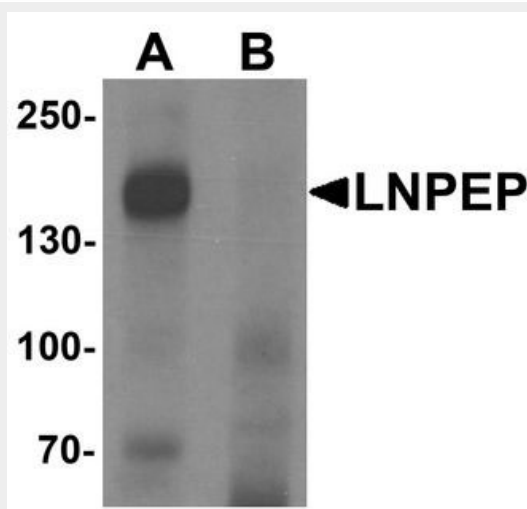
LNPEP Antibody (C-Terminus) - Images



Anti-LNPEP antibody IHC staining of human kidney.



Immunofluorescence of LNPEP in human lung tissue with LNPEP antibody at 20 ug/ml.



Western blot analysis of LNPEP in human lung tissue lysate with LNPEP antibody at 1 ug/ml in (A)...

LNPEP Antibody (C-Terminus) - Background

Release of an N-terminal amino acid, cleaves before cysteine, leucine as well as other amino acids. Degrades peptide hormones such as oxytocin, vasopressin and angiotensin III, and plays a role in maintaining homeostasis during pregnancy. May be involved in the inactivation of neuronal peptides in the brain. Cleaves Met-enkephalin and dynorphin. Binds angiotensin IV and may be the angiotensin IV receptor in the brain.

LNPEP Antibody (C-Terminus) - References

Rogi T.,et al.J. Biol. Chem. 271:56-61(1996).
Laustsen P.G.,et al.Biochim. Biophys. Acta 1352:1-7(1997).
Rasmussen T.E.,et al.Eur. J. Biochem. 267:2297-2306(2000).
Matsumoto H.,et al.Eur. J. Biochem. 268:3259-3266(2001).
Totoki Y.,et al.Submitted (MAR-2005) to the EMBL/GenBank/DDBJ databases.