

FMNL1 Antibody (C-Terminus)
Rabbit Polyclonal Antibody
Catalog # ALS15679**Specification**

FMNL1 Antibody (C-Terminus) - Product Information

Application	IHC, IF, WB
Primary Accession	O95466
Reactivity	Human
Host	Rabbit
Clonality	Polyclonal
Calculated MW	122kDa KDa

FMNL1 Antibody (C-Terminus) - Additional Information**Gene ID** 752**Other Names**

Formin-like protein 1, CLL-associated antigen KW-13, Leukocyte formin, FMNL1, C17orf1, C17orf1B, FMNL

Target/Specificity

Human FMNL1. FRL1 antibody is human, mouse and rat reactive. Three alternatively spliced transcript variants have been observed.

Reconstitution & Storage

Long term: -20°C; Short term: +4°C. Avoid repeat freeze-thaw cycles.

Precautions

FMNL1 Antibody (C-Terminus) is for research use only and not for use in diagnostic or therapeutic procedures.

FMNL1 Antibody (C-Terminus) - Protein Information**Name** FMNL1**Synonyms** C17orf1, C17orf1B, FMNL, FRL1**Function**

May play a role in the control of cell motility and survival of macrophages (By similarity). Plays a role in the regulation of cell morphology and cytoskeletal organization. Required in the cortical actin filament dynamics and cell shape.

Cellular Location

Cytoplasm. Cell membrane; Lipid-anchor. Cytoplasmic vesicle, phagosome. Note=Recruited to actin-rich phagosomes during phagocytosis. Translocates to the plasma membrane upon activation by RAC1 (By similarity).

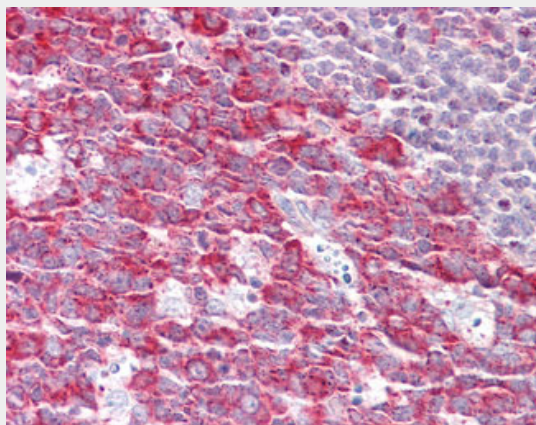
Tissue Location

Expressed in heart, brain, placenta, lung, liver, skeletal muscle, kidney and pancreas

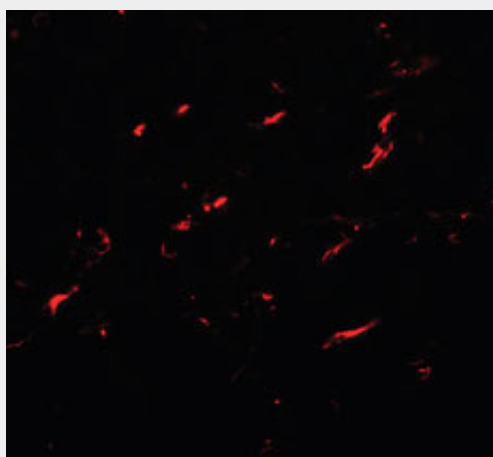
FMNL1 Antibody (C-Terminus) - Protocols

Provided below are standard protocols that you may find useful for product applications.

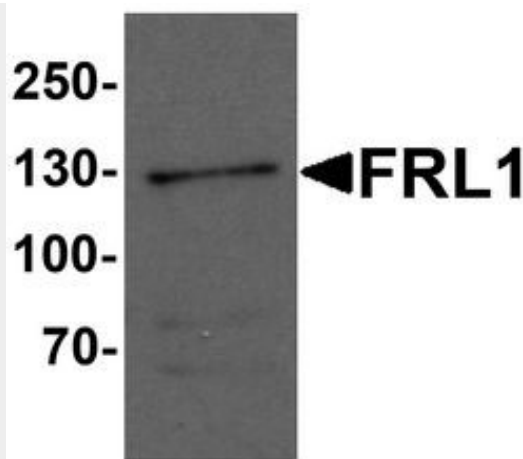
- [Western Blot](#)
- [Blocking Peptides](#)
- [Dot Blot](#)
- [Immunohistochemistry](#)
- [Immunofluorescence](#)
- [Immunoprecipitation](#)
- [Flow Cytometry](#)
- [Cell Culture](#)

FMNL1 Antibody (C-Terminus) - Images

Anti-FMNL1 antibody IHC staining of human tonsil.



Immunofluorescence of FRL1 in EL4 cells. Antibody concentration used was 20 ug/ml.



Western blot analysis of FRL1 in EL4 cell lysate with FRL1 antibody at 1 ug/ml.

FMNL1 Antibody (C-Terminus) - Background

May play a role in the control of cell motility and survival of macrophages (By similarity). Plays a role in the regulation of cell morphology and cytoskeletal organization. Required in the cortical actin filament dynamics and cell shape.

FMNL1 Antibody (C-Terminus) - References

Favaro P.M.B.,et al.Submitted (APR-2003) to the EMBL/GenBank/DDBJ databases.
Zody M.C.,et al.Nature 440:1045-1049(2006).
Krackhardt A.M.,et al.Submitted (OCT-2001) to the EMBL/GenBank/DDBJ databases.
Aronsson F.C.,et al.Hum. Genet. 103:340-345(1998).
Ebert L.,et al.Submitted (JUN-2004) to the EMBL/GenBank/DDBJ databases.