

**PLCL1 Antibody**  
**Rabbit Polyclonal Antibody**  
**Catalog # ALS15690****Specification**

---

**PLCL1 Antibody - Product Information**

Application	IHC
Primary Accession	<a href="#">Q15111</a>
Reactivity	Human
Host	Rabbit
Clonality	Polyclonal
Calculated MW	123kDa KDa

**PLCL1 Antibody - Additional Information****Gene ID** 5334**Other Names**

Inactive phospholipase C-like protein 1, PLC-L1, Phospholipase C-deleted in lung carcinoma, Phospholipase C-related but catalytically inactive protein, PRIP, PLCL1

**Target/Specificity**

Human PLCL1

**Reconstitution & Storage**

Aliquot and freeze at -20° C. Avoid freeze-thaw cycles.

**Precautions**

PLCL1 Antibody is for research use only and not for use in diagnostic or therapeutic procedures.

**PLCL1 Antibody - Protein Information****Name** PLCL1**Function**

Involved in an inositol phospholipid-based intracellular signaling cascade. Shows no PLC activity to phosphatidylinositol 4,5- bisphosphate and phosphatidylinositol. Component in the phospho-dependent endocytosis process of GABA A receptor (By similarity). Regulates the turnover of receptors and thus contributes to the maintenance of GABA-mediated synaptic inhibition. Its aberrant expression could contribute to the genesis and progression of lung carcinoma. Acts as an inhibitor of PPP1C.

**Cellular Location**

Cytoplasm.

**Tissue Location**

Expressed in a variety of fetal and adult organs including brain, lung and kidney. Its expression was greatly reduced in small and non-small cell lung carcinoma. Isoform 1 is predominantly

expressed in brain.

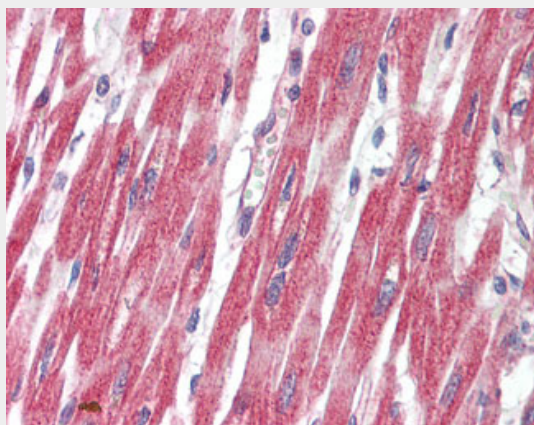
**Volume**  
50 µl

### **PLCL1 Antibody - Protocols**

Provided below are standard protocols that you may find useful for product applications.

- [Western Blot](#)
- [Blocking Peptides](#)
- [Dot Blot](#)
- [Immunohistochemistry](#)
- [Immunofluorescence](#)
- [Immunoprecipitation](#)
- [Flow Cytometry](#)
- [Cell Culture](#)

### **PLCL1 Antibody - Images**



Anti-PLCL1 antibody IHC staining of human heart.

### **PLCL1 Antibody - Background**

Involved in an inositol phospholipid-based intracellular signaling cascade. Shows no PLC activity to phosphatidylinositol 4,5-bisphosphate and phosphatidylinositol. Component in the phospho-dependent endocytosis process of GABA A receptor (By similarity). Regulates the turnover of receptors and thus contributes to the maintenance of GABA-mediated synaptic inhibition. Its aberrant expression could contribute to the genesis and progression of lung carcinoma. Acts as a inhibitor of PPP1C.

### **PLCL1 Antibody - References**

Kohno T.,et al.Hum. Mol. Genet. 4:667-674(1995).  
Hillier L.W.,et al.Nature 434:724-731(2005).  
Bechtel S.,et al.BMC Genomics 8:399-399(2007).  
Yoshimura K.,et al.J. Biol. Chem. 276:17908-17913(2001).  
Kanematsu T.,et al.EMBO J. 21:1004-1011(2002).