

WWOX Antibody
Rabbit Polyclonal Antibody
Catalog # ALS15709**Specification**

WWOX Antibody - Product Information

Application	IF
Primary Accession	Q9NZC7
Reactivity	Human
Host	Rabbit
Clonality	Polyclonal
Calculated MW	47kDa KDa

WWOX Antibody - Additional Information**Gene ID** 51741**Other Names**

WW domain-containing oxidoreductase, 1.1.1.-, Fragile site FRA16D oxidoreductase, WWOX, FOR, WOX1

Target/Specificity

Human WWOX. Predicted cross-reactivity based on amino acid sequence homology: mouse (95%), rat (96%), bovine (93%).

Reconstitution & Storage

Aliquot and store at -20°C. Minimize freezing and thawing.

Precautions

WWOX Antibody is for research use only and not for use in diagnostic or therapeutic procedures.

WWOX Antibody - Protein Information**Name** WWOX**Synonyms** FOR, SDR41C1, WOX1**Function**

Putative oxidoreductase. Acts as a tumor suppressor and plays a role in apoptosis. Required for normal bone development (By similarity). May function synergistically with p53/TP53 to control genotoxic stress-induced cell death. Plays a role in TGFB1 signaling and TGFB1-mediated cell death. May also play a role in tumor necrosis factor (TNF)-mediated cell death. Inhibits Wnt signaling, probably by sequestering DVL2 in the cytoplasm.

Cellular Location

Cytoplasm. Nucleus Mitochondrion. Golgi apparatus. Lysosome Note=Partially localizes to the mitochondria (PubMed:14695174) Translocates to the nucleus upon genotoxic stress or TNF stimulation (By similarity). Translocates to the nucleus in response to TGFB1 (PubMed:19366691).

Isoform 5 and isoform 6 may localize in the nucleus Localized to the lysosome probably upon binding to VOPP1 (PubMed:30285739). {ECO:0000250, ECO:0000269|PubMed:14695174, ECO:0000269|PubMed:19366691, ECO:0000269|PubMed:30285739}

Tissue Location

Widely expressed. Strongly expressed in testis, prostate, and ovary. Overexpressed in cancer cell lines. Isoform 5 and isoform 6 may only be expressed in tumor cell lines

Volume

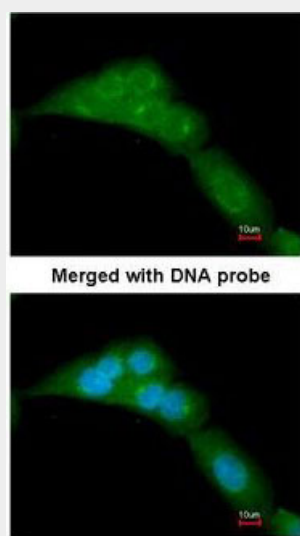
50 μ l

WWOX Antibody - Protocols

Provided below are standard protocols that you may find useful for product applications.

- [Western Blot](#)
- [Blocking Peptides](#)
- [Dot Blot](#)
- [Immunohistochemistry](#)
- [Immunofluorescence](#)
- [Immunoprecipitation](#)
- [Flow Cytometry](#)
- [Cell Culture](#)

WWOX Antibody - Images



Immunofluorescence of paraformaldehyde-fixed A549, using WWOX antibody at 1:200 dilution.

WWOX Antibody - Background

Putative oxidoreductase. Acts as a tumor suppressor and plays a role in apoptosis. Required for normal bone development (By similarity). May function synergistically with p53/TP53 to control genotoxic stress-induced cell death. Plays a role in TGFB1 signaling and TGFB1-mediated cell death. May also play a role in tumor necrosis factor (TNF)-mediated cell death. Inhibits Wnt signaling, probably by sequestering DVL2 in the cytoplasm.

WWOX Antibody - References

Bednarek A.K.,et al.Cancer Res. 60:2140-2145(2000).
Ried K.,et al.Hum. Mol. Genet. 9:1651-1663(2000).
Bednarek A.K.,et al.Cancer Res. 61:8068-8073(2001).
Paige A.J.W.,et al.Proc. Natl. Acad. Sci. U.S.A. 98:11417-11422(2001).
Chang N.-S.,et al.Submitted (DEC-2004) to the EMBL/GenBank/DDBJ databases.