

APOA1 / Apolipoprotein A 1 Antibody (clone AT1E12)
Mouse Monoclonal Antibody
Catalog # ALS15727**Specification**

APOA1 / Apolipoprotein A 1 Antibody (clone AT1E12) - Product Information

Application	WB
Primary Accession	P02647
Reactivity	Human
Host	Mouse
Clonality	Monoclonal
Calculated MW	31kDa KDa

APOA1 / Apolipoprotein A 1 Antibody (clone AT1E12) - Additional Information**Gene ID** 335**Other Names**

Apolipoprotein A-I, Apo-AI, ApoA-I, Apolipoprotein A1, Proapolipoprotein A-I, ProapoA-I, Truncated apolipoprotein A-I, Apolipoprotein A-I(1-242), APOA1

Target/Specificity

Human Apolipoprotein A1 / APOA1

Reconstitution & Storage

Can be stored at 4°C. For long term storage, aliquot and store at -20°C. Avoid repeated freezing and thawing cycles.

Precautions

APOA1 / Apolipoprotein A 1 Antibody (clone AT1E12) is for research use only and not for use in diagnostic or therapeutic procedures.

APOA1 / Apolipoprotein A 1 Antibody (clone AT1E12) - Protein Information**Name** APOA1 ([HGNC:600](#))**Function**

Participates in the reverse transport of cholesterol from tissues to the liver for excretion by promoting cholesterol efflux from tissues and by acting as a cofactor for the lecithin cholesterol acyltransferase (LCAT). As part of the SPAP complex, activates spermatozoa motility.

Cellular Location

Secreted.

Tissue Location

Major protein of plasma HDL, also found in chylomicrons. Synthesized in the liver and small intestine. The oxidized form at Met-110 and Met-136 is increased in individuals with increased risk for coronary artery disease, such as in carrier of the eNOSa/b genotype and exposure to cigarette

smoking. It is also present in increased levels in aortic lesions relative to native ApoA-I and increased levels are seen with increasing severity of disease

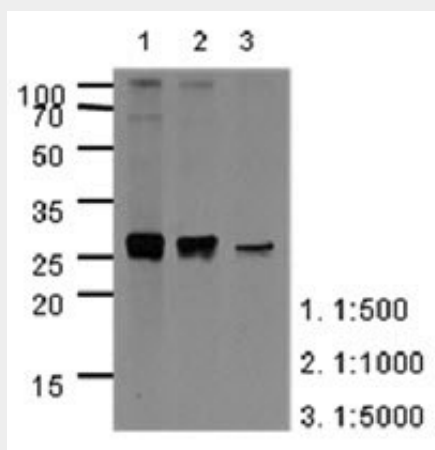
Volume

50 µl

APOA1 / Apolipoprotein A 1 Antibody (clone AT1E12) - Protocols

Provided below are standard protocols that you may find useful for product applications.

- [Western Blot](#)
- [Blocking Peptides](#)
- [Dot Blot](#)
- [Immunohistochemistry](#)
- [Immunofluorescence](#)
- [Immunoprecipitation](#)
- [Flow Cytometry](#)
- [Cell Culture](#)

APOA1 / Apolipoprotein A 1 Antibody (clone AT1E12) - Images

Western Blot: The extracts of HepG2 (40 ug) were resolved by SDS-PAGE, transferred to PVDF...

APOA1 / Apolipoprotein A 1 Antibody (clone AT1E12) - Background

Participates in the reverse transport of cholesterol from tissues to the liver for excretion by promoting cholesterol efflux from tissues and by acting as a cofactor for the lecithin cholesterol acyltransferase (LCAT). As part of the SPAP complex, activates spermatozoa motility.

APOA1 / Apolipoprotein A 1 Antibody (clone AT1E12) - References

Shoulders C.C.,et al.Nucleic Acids Res. 11:2827-2837(1983).
Cheung P.,et al.Nucleic Acids Res. 11:3703-3715(1983).
Karathanasis S.K.,et al.Proc. Natl. Acad. Sci. U.S.A. 80:6147-6151(1983).
Seilhamer J.J.,et al.DNA 3:309-317(1984).
Sharpe C.R.,et al.Nucleic Acids Res. 12:3917-3932(1984).