

**GRG4 / TLE4 Antibody (aa161-210)**  
**Rabbit Polyclonal Antibody**  
**Catalog # ALS15759****Specification**

---

**GRG4 / TLE4 Antibody (aa161-210) - Product Information**

Application	IHC, WB
Primary Accession	<a href="#">Q04727</a>
Reactivity	Human, Mouse, Rat
Host	Rabbit
Clonality	Polyclonal
Calculated MW	84kDa KDa

**GRG4 / TLE4 Antibody (aa161-210) - Additional Information****Gene ID** 7091**Other Names**

Transducin-like enhancer protein 4, Grg-4, Groucho-related protein 4, TLE4, GRG4, KIAA1261

**Target/Specificity**

TLE4 Antibody detects endogenous levels of total TLE4 protein.

**Reconstitution & Storage**

Store at -20°C for up to one year.

**Precautions**

GRG4 / TLE4 Antibody (aa161-210) is for research use only and not for use in diagnostic or therapeutic procedures.

**GRG4 / TLE4 Antibody (aa161-210) - Protein Information****Name** TLE4**Synonyms** GRG4, KIAA1261**Function**

Transcriptional corepressor that binds to a number of transcription factors. Inhibits the transcriptional activation mediated by PAX5, and by CTNNB1 and TCF family members in Wnt signaling. The effects of full-length TLE family members may be modulated by association with dominant-negative AES. Essential for the transcriptional repressor activity of SIX3 during retina and lens development and for SIX3 transcriptional auto-repression (By similarity). Involved in transcriptional repression of GNRHR and enhances MSX1-mediated transcriptional repression of CGA/alpha-GSU (By similarity).

**Cellular Location**

Nucleus.

**Tissue Location**

In all tissues examined, mostly in brain, and muscle

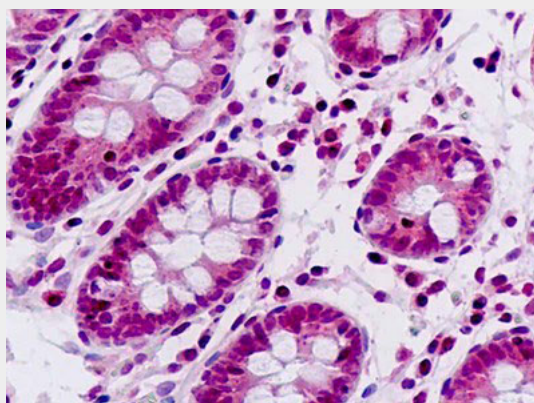
**Volume**

50  $\mu$ l

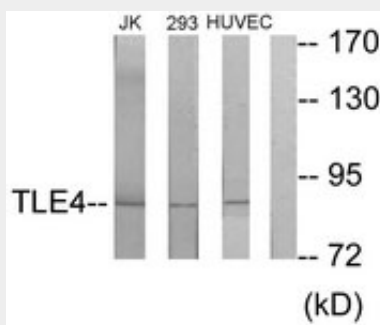
**GRG4 / TLE4 Antibody (aa161-210) - Protocols**

Provided below are standard protocols that you may find useful for product applications.

- [Western Blot](#)
- [Blocking Peptides](#)
- [Dot Blot](#)
- [Immunohistochemistry](#)
- [Immunofluorescence](#)
- [Immunoprecipitation](#)
- [Flow Cytometry](#)
- [Cell Culture](#)

**GRG4 / TLE4 Antibody (aa161-210) - Images**

Human, Small Intestine: Formalin-Fixed Paraffin-Embedded (FFPE)



Western blot of extracts from Jurkat/293/HUVEC cells, using TLE4 Antibody.

**GRG4 / TLE4 Antibody (aa161-210) - Background**

Transcriptional corepressor that binds to a number of transcription factors. Inhibits the transcriptional activation mediated by PAX5, and by CTNNB1 and TCF family members in Wnt signaling. The effects of full-length TLE family members may be modulated by association with dominant-negative AES. Essential for the transcriptional repressor activity of SIX3 during retina and

lens development and for SIX3 transcriptional auto-repression (By similarity).

**GRG4 / TLE4 Antibody (aa161-210) - References**

Nagase T.,et al.DNA Res. 6:337-345(1999).  
Ota T.,et al.Nat. Genet. 36:40-45(2004).  
Humphray S.J.,et al.Nature 429:369-374(2004).  
Bechtel S.,et al.BMC Genomics 8:399-399(2007).  
Stifani S.,et al.Nat. Genet. 2:119-127(1992).