

**GSC / Goosecoid Antibody (clone 2C1)**  
**Mouse Monoclonal Antibody**  
**Catalog # ALS15831****Specification**

---

**GSC / Goosecoid Antibody (clone 2C1) - Product Information**

Application	IHC, WB
Primary Accession	<a href="#">P56915</a>
Reactivity	Human
Host	Mouse
Clonality	Monoclonal
Calculated MW	28kDa KDa

**GSC / Goosecoid Antibody (clone 2C1) - Additional Information****Gene ID** 145258**Other Names**

Homeobox protein goosecoid, GSC

**Target/Specificity**

Human GSC

**Reconstitution & Storage**

Store at -20°C or lower. Aliquot to avoid repeated freezing and thawing.

**Precautions**

GSC / Goosecoid Antibody (clone 2C1) is for research use only and not for use in diagnostic or therapeutic procedures.

**GSC / Goosecoid Antibody (clone 2C1) - Protein Information****Name** GSC**Function**

Regulates chordin (CHRD). May play a role in spatial programming within discrete embryonic fields or lineage compartments during organogenesis. In concert with NKX3-2, plays a role in defining the structural components of the middle ear; required for the development of the entire tympanic ring (By similarity). Probably involved in the regulatory networks that define neural crest cell fate specification and determine mesoderm cell lineages in mammals.

**Cellular Location**

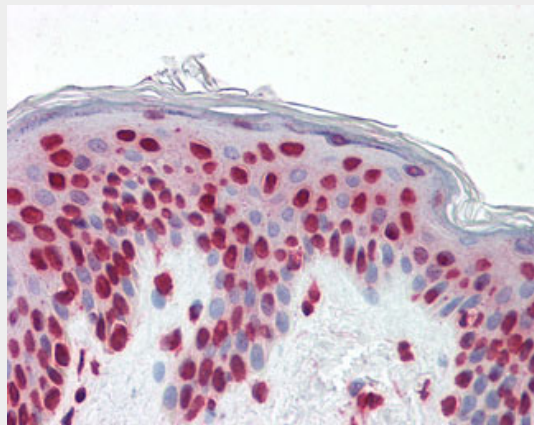
Nucleus.

**GSC / Goosecoid Antibody (clone 2C1) - Protocols**

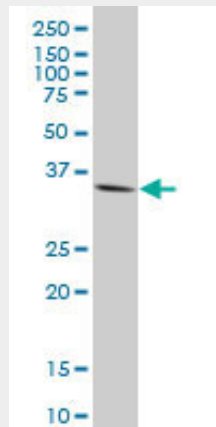
Provided below are standard protocols that you may find useful for product applications.

- [Western Blot](#)
- [Blocking Peptides](#)
- [Dot Blot](#)
- [Immunohistochemistry](#)
- [Immunofluorescence](#)
- [Immunoprecipitation](#)
- [Flow Cytometry](#)
- [Cell Culture](#)

#### **GSC / Goosecoid Antibody (clone 2C1) - Images**



Anti-GSC / Goosecoid antibody IHC staining of human skin.



GSC monoclonal antibody (M17), clone 2C1. Western blot of GSC expression in human kidney.

#### **GSC / Goosecoid Antibody (clone 2C1) - Background**

Regulates chordin (CHRD). May play a role in spatial programming within discrete embryonic fields or lineage compartments during organogenesis. In concert with NKX3-2, plays a role in defining the structural components of the middle ear; required for the development of the entire tympanic ring (By similarity). Probably involved in the regulatory networks that define neural crest cell fate specification and determine mesoderm cell lineages in mammals.

#### **GSC / Goosecoid Antibody (clone 2C1) - References**

Blum M., et al. Genomics 21:388-393(1994).

Guo J.H.,et al.Submitted (NOV-2002) to the EMBL/GenBank/DDBJ databases.  
Parry D.A.,et al.Am. J. Hum. Genet. 93:1135-1142(2013).