

RASSF10 Antibody (N-Terminus)
Rabbit Polyclonal Antibody
Catalog # ALS15851**Specification**

RASSF10 Antibody (N-Terminus) - Product Information

Application	IHC, WB
Primary Accession	A6NK89
Reactivity	Human
Host	Rabbit
Clonality	Polyclonal
Calculated MW	57kDa KDa

RASSF10 Antibody (N-Terminus) - Additional Information**Gene ID** 644943**Other Names**

Ras association domain-containing protein 10, RASSF10

Target/Specificity

Human RASSF10. RASSF10 antibody will not cross-react with other RAS association domain-containing family members.

Reconstitution & Storage

Short term 4°C, long term aliquot and store at -20°C, avoid freeze thaw cycles. Store undiluted.

Precautions

RASSF10 Antibody (N-Terminus) is for research use only and not for use in diagnostic or therapeutic procedures.

RASSF10 Antibody (N-Terminus) - Protein Information**Name** RASSF10**Function**

Plays an important role in regulating embryonic neurogenesis.

Cellular Location

Cytoplasm, cytosol. Cytoplasm, cytoskeleton, microtubule organizing center, centrosome. Cytoplasm, cytoskeleton, spindle pole. Note=During interphase, predominantly cytoplasmic, although some nuclear staining in several tumor cell contexts. During prophase, observed at developing centrosomes. Displays persistent localization with centrosomally radiating microtubule bundles until late telophase. Associates with spindle poles particularly during metaphase and anaphase before relocating back to the cytoplasm

Tissue Location

Expressed in brain. Tends to be down-regulated in astrocytic gliomas due to promoter methylation.

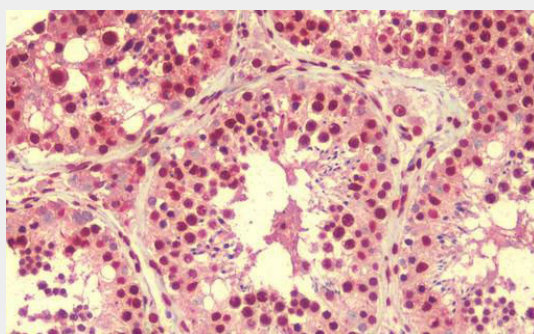
Methylation occurs early in gliomagenesis and the extent of methylation parallels with higher glioma grades, so that methylation is observed in close to 70% WHO grade IV primary glioblastomas, but not in grade I astrocytomas

RASSF10 Antibody (N-Terminus) - Protocols

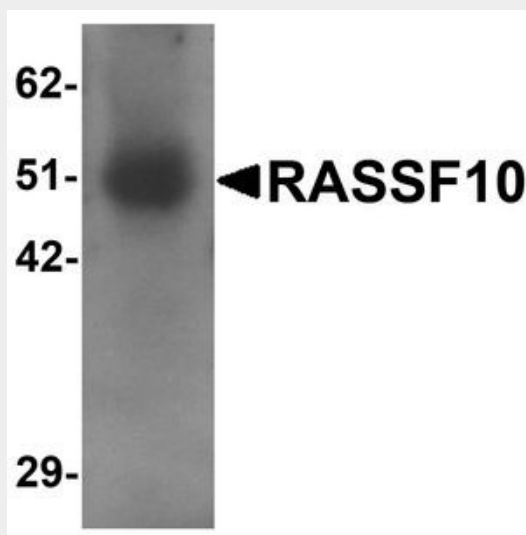
Provided below are standard protocols that you may find useful for product applications.

- [Western Blot](#)
- [Blocking Peptides](#)
- [Dot Blot](#)
- [Immunohistochemistry](#)
- [Immunofluorescence](#)
- [Immunoprecipitation](#)
- [Flow Cytometry](#)
- [Cell Culture](#)

RASSF10 Antibody (N-Terminus) - Images



Anti-RASSF10 antibody IHC staining of human testis.



Western blot analysis of RASSF10 in human lung tissue lysate with RASSF10 antibody at 1 ug/ml

RASSF10 Antibody (N-Terminus) - References

Taylor T.D., et al. Nature 440:497-500(2006).
Sherwood V., et al. Mol. Biol. Cell 19:1772-1782(2008).

Hill V.K.,et al.Oncogene 30:978-989(2011).