

**CCDC141 Antibody (N-Terminus)**  
**Rabbit Polyclonal Antibody**  
**Catalog # ALS15852****Specification**

---

**CCDC141 Antibody (N-Terminus) - Product Information**

Application	IF
Primary Accession	<a href="#">Q6ZP82</a>
Reactivity	Human, Mouse
Host	Rabbit
Clonality	Polyclonal
Calculated MW	166kDa KDa

**CCDC141 Antibody (N-Terminus) - Additional Information****Gene ID** 285025**Other Names**

Coiled-coil domain-containing protein 141, Coiled-coil protein associated with myosin II and DISC1, CCDC141, CAMDI {ECO:0000303|PubMed:20956536}

**Target/Specificity**

Human CCDC141. At least four isoforms of CCDC141 are known to exist.

**Reconstitution & Storage**

Short term 4°C, long term aliquot and store at -20°C, avoid freeze thaw cycles. Store undiluted.

**Precautions**

CCDC141 Antibody (N-Terminus) is for research use only and not for use in diagnostic or therapeutic procedures.

**CCDC141 Antibody (N-Terminus) - Protein Information****Name** CCDC141**Synonyms** CAMDI {ECO:0000303|PubMed:20956536}**Function**

Plays a critical role in cortical radial and GnRH neurons migration during brain development. Regulates cortical radial migration by negatively controlling the activity of histone deacetylase 6 (HDAC6) and promotes centrosome maturation. CAMDI is required for dilation formation of cortical neurons during radial migration. Plays a critical role in learning and memory performance through regulation of AMPA- selective glutamate receptors (AMPArs) cell surface expression in competition with KIBRA.

**Cellular Location**

Cytoplasm {ECO:0000250|UniProtKB:E9Q8Q6}. Cytoplasm, cytoskeleton, microtubule organizing center, centrosome {ECO:0000250|UniProtKB:E9Q8Q6}. Note=Co-localized with DISC1 at/around

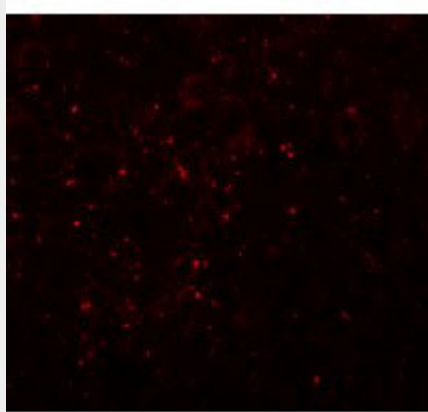
the centrosome. Localizes to the centrosome, at least in part, in a DISC1-dependent manner. Accumulates and oscillates at the dilation in cortical neurons during migration. CAMDI protein level is stabilized at the G1 phase and destabilized at the G2 /M phase  
{ECO:0000250|UniProtKB:E9Q8Q6}

### **CCDC141 Antibody (N-Terminus) - Protocols**

Provided below are standard protocols that you may find useful for product applications.

- [Western Blot](#)
- [Blocking Peptides](#)
- [Dot Blot](#)
- [Immunohistochemistry](#)
- [Immunofluorescence](#)
- [Immunoprecipitation](#)
- [Flow Cytometry](#)
- [Cell Culture](#)

### **CCDC141 Antibody (N-Terminus) - Images**



Immunofluorescence of CCDC141 in mouse brain tissue with CCDC141 antibody at 20 µg/mL.

### **CCDC141 Antibody (N-Terminus) - Background**

Plays a critical role in radial migration and centrosomal function.

### **CCDC141 Antibody (N-Terminus) - References**

Hillier L.W.,et al.Nature 434:724-731(2005).  
Mural R.J.,et al.Submitted (SEP-2005) to the EMBL/GenBank/DDBJ databases.  
Ota T.,et al.Nat. Genet. 36:40-45(2004).  
Fukuda T.,et al.J. Biol. Chem. 285:40554-40561(2010).