

**RILPL1 Antibody (N-Terminus)**  
**Rabbit Polyclonal Antibody**  
**Catalog # ALS15875****Specification**

---

**RILPL1 Antibody (N-Terminus) - Product Information**

Application	IHC, IF, WB
Primary Accession	<a href="#">Q5EBL4</a>
Reactivity	Human, Mouse, Rat
Host	Rabbit
Clonality	Polyclonal
Calculated MW	47kDa KDa

**RILPL1 Antibody (N-Terminus) - Additional Information****Gene ID** 353116**Other Names**

RILP-like protein 1, Rab-interacting lysosomal-like protein 1, RILPL1, RLP1

**Target/Specificity**

Human RILPL1. At least three isoforms of RILPL1 are known to exist; this antibody will detect the two shorter isoforms. RILPL1 antibody is predicted to not cross-react with RILP.

**Reconstitution & Storage**

Short term 4°C, long term aliquot and store at -20°C, avoid freeze thaw cycles. Store undiluted.

**Precautions**

RILPL1 Antibody (N-Terminus) is for research use only and not for use in diagnostic or therapeutic procedures.

**RILPL1 Antibody (N-Terminus) - Protein Information****Name** RILPL1**Synonyms** RLP1**Function**

Plays a role in the regulation of cell shape and polarity (By similarity). Plays a role in cellular protein transport, including protein transport away from primary cilia (By similarity). Neuroprotective protein, which acts by sequestering GAPDH in the cytosol and prevent the apoptotic function of GAPDH in the nucleus (By similarity). Competes with SIAH1 for binding GAPDH (By similarity). Does not regulate lysosomal morphology and distribution (PubMed:<a href="http://www.uniprot.org/citations/14668488" target="\_blank">14668488</a>). Binds to RAB10 following LRRK2-mediated RAB10 phosphorylation which leads to inhibition of ciliogenesis (PubMed:<a href="http://www.uniprot.org/citations/30398148" target="\_blank">30398148</a>).

**Cellular Location**

Cytoplasm, cytosol. Cytoplasm, cytoskeleton, microtubule organizing center, centrosome, centriole  
Cytoplasm, cytoskeleton, cilium basal body

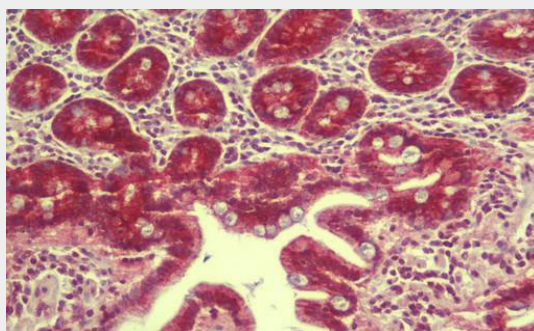
**Tissue Location**

Widely expressed. Expressed at lower level in liver and kidney.

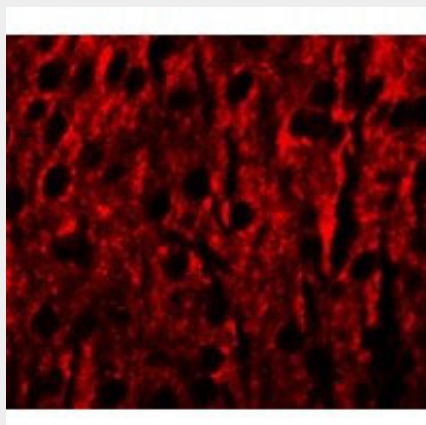
**RILPL1 Antibody (N-Terminus) - Protocols**

Provided below are standard protocols that you may find useful for product applications.

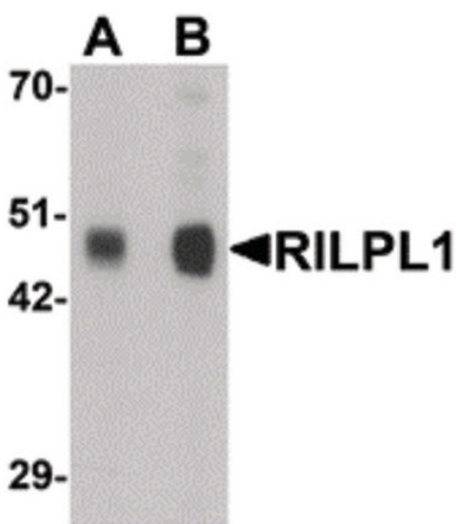
- [Western Blot](#)
- [Blocking Peptides](#)
- [Dot Blot](#)
- [Immunohistochemistry](#)
- [Immunofluorescence](#)
- [Immunoprecipitation](#)
- [Flow Cytometry](#)
- [Cell Culture](#)

**RILPL1 Antibody (N-Terminus) - Images**

Anti-RILPL1 antibody IHC staining of human small intestine.



Immunofluorescence of RILPL1 in mouse brain cells with RILPL1 antibody at 20 µg/mL.



Western blot of RILPL1 in rat cerebellum tissue lysate with RILPL1 antibody at (A) 0.5 and (B) 1...

#### **RILPL1 Antibody (N-Terminus) - Background**

Plays a role in the regulation of cell shape and polarity. Plays a role in cellular protein transport, including protein transport away from primary cilia. Neuroprotective protein, which acts by sequestering GAPDH in the cytosol and prevent the apoptotic function of GAPDH in the nucleus. Competes with SIAH1 for binding GAPDH (By similarity). Does not regulate lysosomal morphology and distribution.

#### **RILPL1 Antibody (N-Terminus) - References**

Ota T.,et al.Nat. Genet. 36:40-45(2004).  
Scherer S.E.,et al.Nature 440:346-351(2006).  
Wang T.,et al.Mol. Biol. Cell 15:815-826(2004).  
Dephoure N.,et al.Proc. Natl. Acad. Sci. U.S.A. 105:10762-10767(2008).  
Burkard T.R.,et al.BMC Syst. Biol. 5:17-17(2011).