

**SDHAF2 Antibody (N-Terminus)**  
**Chicken Polyclonal Antibody**  
**Catalog # ALS15891****Specification**

---

**SDHAF2 Antibody (N-Terminus) - Product Information**

Application	IHC
Primary Accession	<a href="#">O9NX18</a>
Reactivity	Human, Mouse, Rat
Host	Chicken
Clonality	Polyclonal
Calculated MW	20kDa KDa

**SDHAF2 Antibody (N-Terminus) - Additional Information****Gene ID** 54949**Other Names**

Succinate dehydrogenase assembly factor 2, mitochondrial  
{ECO:0000255|HAMAP-Rule:MF\_03057}, SDH assembly factor 2  
{ECO:0000255|HAMAP-Rule:MF\_03057}, SDHAF2 {ECO:0000255|HAMAP-Rule:MF\_03057},  
SDHAF2 {ECO:0000255|HAMAP-Rule:MF\_03057}

**Target/Specificity**

Human SDHAF2. SDHAF2 antibody is predicted to not cross-react with other SDHAF protein family members.

**Reconstitution & Storage**

Short term 4°C, long term aliquot and store at -20°C, avoid freeze thaw cycles. Store undiluted.

**Precautions**

SDHAF2 Antibody (N-Terminus) is for research use only and not for use in diagnostic or therapeutic procedures.

**SDHAF2 Antibody (N-Terminus) - Protein Information****Name** SDHAF2 {ECO:0000255|HAMAP-Rule:MF\_03057}**Function**

Plays an essential role in the assembly of succinate dehydrogenase (SDH), an enzyme complex (also referred to as respiratory complex II) that is a component of both the tricarboxylic acid (TCA) cycle and the mitochondrial electron transport chain, and which couples the oxidation of succinate to fumarate with the reduction of ubiquinone (coenzyme Q) to ubiquinol. Required for flavinylation (covalent attachment of FAD) of the flavoprotein subunit SDHA of the SDH catalytic dimer.

**Cellular Location**

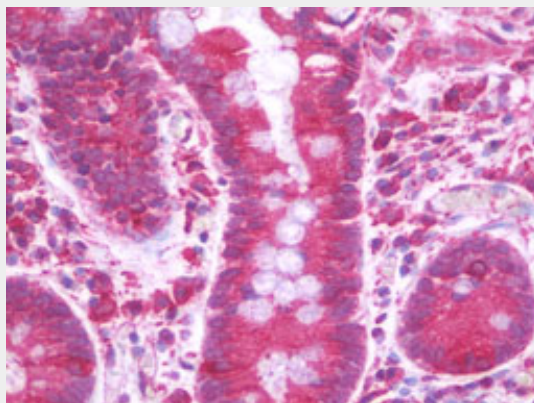
Mitochondrion matrix {ECO:0000255|HAMAP- Rule:MF\_03057, ECO:0000269|PubMed:19628817}

## SDHAF2 Antibody (N-Terminus) - Protocols

Provided below are standard protocols that you may find useful for product applications.

- [Western Blot](#)
- [Blocking Peptides](#)
- [Dot Blot](#)
- [Immunohistochemistry](#)
- [Immunofluorescence](#)
- [Immunoprecipitation](#)
- [Flow Cytometry](#)
- [Cell Culture](#)

## SDHAF2 Antibody (N-Terminus) - Images



Anti-SDHAF2 antibody IHC staining of human small intestine.

## SDHAF2 Antibody (N-Terminus) - Background

Plays an essential role in the assembly of succinate dehydrogenase (SDH), an enzyme complex (also referred to as respiratory complex II) that is a component of both the tricarboxylic acid (TCA) cycle and the mitochondrial electron transport chain, and which couples the oxidation of succinate to fumarate with the reduction of ubiquinone (coenzyme Q) to ubiquinol. Required for flavinylation (covalent attachment of FAD) of the flavoprotein subunit SDHA of the SDH catalytic dimer.

## SDHAF2 Antibody (N-Terminus) - References

Ota T., et al. Nat. Genet. 36:40-45(2004).  
Hao H.-X., et al. Science 325:1139-1142(2009).