

KRT19 / CK19 / Cytokeratin 19 Antibody (clone AT13D10)
Mouse Monoclonal Antibody
Catalog # ALS15895**Specification**

KRT19 / CK19 / Cytokeratin 19 Antibody (clone AT13D10) - Product Information

Application	WB, IHC
Primary Accession	P08727
Reactivity	Human
Host	Mouse
Clonality	Monoclonal
Calculated MW	44kDa KDa

KRT19 / CK19 / Cytokeratin 19 Antibody (clone AT13D10) - Additional Information**Gene ID** 3880**Other Names**

Keratin, type I cytoskeletal 19, Cytokeratin-19, CK-19, Keratin-19, K19, KRT19

Target/Specificity

Human KRT19 / CK19 / Cytokeratin 19

Reconstitution & Storage

Can be stored at 4°C. For long term storage, aliquot and store at -20°C. Avoid repeated freezing and thawing cycles.

Precautions

KRT19 / CK19 / Cytokeratin 19 Antibody (clone AT13D10) is for research use only and not for use in diagnostic or therapeutic procedures.

KRT19 / CK19 / Cytokeratin 19 Antibody (clone AT13D10) - Protein Information**Name** KRT19**Function**

Involved in the organization of myofibers. Together with KRT8, helps to link the contractile apparatus to dystrophin at the costameres of striated muscle.

Tissue Location

Expressed in a defined zone of basal keratinocytes in the deep outer root sheath of hair follicles. Also observed in sweat gland and mammary gland ductal and secretory cells, bile ducts, gastrointestinal tract, bladder urothelium, oral epithelia, esophagus, ectocervical epithelium (at protein level). Expressed in epidermal basal cells, in nipple epidermis and a defined region of the hair follicle. Also seen in a subset of vascular wall cells in both the veins and artery of human umbilical cord, and in umbilical cord vascular smooth muscle. Observed in muscle fibers accumulating in the costameres of myoplasm at the sarcolemma in structures that contain dystrophin and spectrin.

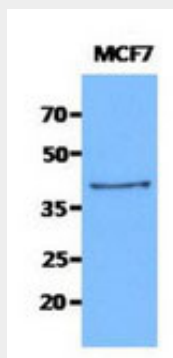
Volume
50 µl

KRT19 / CK19 / Cytokeratin 19 Antibody (clone AT13D10) - Protocols

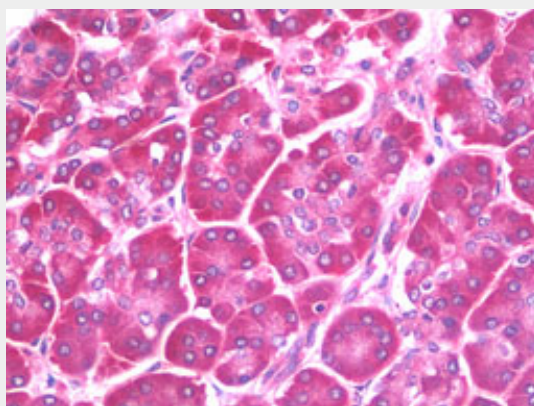
Provided below are standard protocols that you may find useful for product applications.

- [Western Blot](#)
- [Blocking Peptides](#)
- [Dot Blot](#)
- [Immunohistochemistry](#)
- [Immunofluorescence](#)
- [Immunoprecipitation](#)
- [Flow Cytometry](#)
- [Cell Culture](#)

KRT19 / CK19 / Cytokeratin 19 Antibody (clone AT13D10) - Images



Western Blot: The cell lysates of MCF7 (40 ug) were resolved by SDS-PAGE, transferred to PVDF...



Anti-KRT19 / CK19 / Cytokeratin 19 antibody IHC staining of human pancreas.

KRT19 / CK19 / Cytokeratin 19 Antibody (clone AT13D10) - Background

Involved in the organization of myofibers. Together with KRT8, helps to link the contractile apparatus to dystrophin at the costameres of striated muscle.

KRT19 / CK19 / Cytokeratin 19 Antibody (clone AT13D10) - References

Stasiak P.C., et al. Nucleic Acids Res. 15:10058-10058(1987).

Bader B.L.,et al.Eur. J. Cell Biol. 47:300-319(1988).
Eckert R.L.,et al.Proc. Natl. Acad. Sci. U.S.A. 85:1114-1118(1988).
Stasiak P.C.,et al.J. Invest. Dermatol. 92:707-716(1989).
Whittock N.V.,et al.Biochem. Biophys. Res. Commun. 267:462-465(2000).