

DOK4 Antibody (aa11-60)
Rabbit Polyclonal Antibody
Catalog # ALS15971**Specification**

DOK4 Antibody (aa11-60) - Product Information

Application	IHC, WB
Primary Accession	Q8TEW6
Reactivity	Human, Mouse
Host	Rabbit
Clonality	Polyclonal
Calculated MW	37kDa KDa

DOK4 Antibody (aa11-60) - Additional Information**Gene ID** 55715**Other Names**

Docking protein 4, Downstream of tyrosine kinase 4, Insulin receptor substrate 5, IRS-5, IRS5, DOK4

Target/Specificity

DOK4 Antibody detects endogenous levels of total DOK4 protein.

Reconstitution & Storage

Store at -20°C for up to one year.

Precautions

DOK4 Antibody (aa11-60) is for research use only and not for use in diagnostic or therapeutic procedures.

DOK4 Antibody (aa11-60) - Protein Information**Name** DOK4**Function**

DOK proteins are enzymatically inert adaptor or scaffolding proteins. They provide a docking platform for the assembly of multimolecular signaling complexes. DOK4 functions in RET-mediated neurite outgrowth and plays a positive role in activation of the MAP kinase pathway (By similarity). Putative link with downstream effectors of RET in neuronal differentiation. May be involved in the regulation of the immune response induced by T-cells.

Tissue Location

Widely expressed. High expression in skeletal muscle, heart, kidney and liver. Weaker expression in spleen, lung and small intestine, brain, heart and. Expressed in both resting and activated peripheral blood T-cells.

Volume

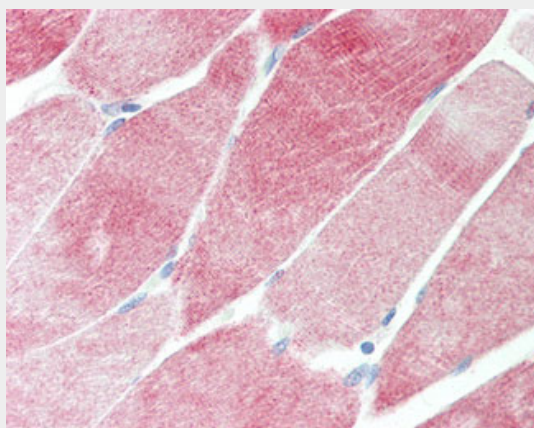
50 µl

DOK4 Antibody (aa11-60) - Protocols

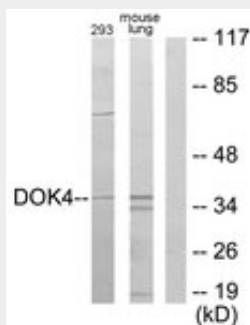
Provided below are standard protocols that you may find useful for product applications.

- [Western Blot](#)
- [Blocking Peptides](#)
- [Dot Blot](#)
- [Immunohistochemistry](#)
- [Immunofluorescence](#)
- [Immunoprecipitation](#)
- [Flow Cytometry](#)
- [Cell Culture](#)

DOK4 Antibody (aa11-60) - Images



Anti-DOK4 antibody IHC staining of human skeletal muscle.



Western blot of extracts from 293/mouse lung cells, using DOK4 Antibody.

DOK4 Antibody (aa11-60) - Background

DOK proteins are enzymatically inert adaptor or scaffolding proteins. They provide a docking platform for the assembly of multimolecular signaling complexes. DOK4 functions in RET-mediated neurite outgrowth and plays a positive role in activation of the MAP kinase pathway (By similarity). Putative link with downstream effectors of RET in neuronal differentiation. May be involved in the regulation of the immune response induced by T-cells.

DOK4 Antibody (aa11-60) - References

Favre C.,et al.Genes Immun. 4:40-45(2003).
Cai D.,et al.J. Biol. Chem. 278:25323-25330(2003).
Ota T.,et al.Nat. Genet. 36:40-45(2004).
Loftus B.J.,et al.Genomics 60:295-308(1999).