

CD2AP Antibody
Rabbit Polyclonal Antibody
Catalog # ALS16000**Specification**

CD2AP Antibody - Product Information

Application	IHC
Primary Accession	Q9Y5K6
Reactivity	Human, Mouse, Rat
Host	Rabbit
Clonality	Polyclonal
Calculated MW	71kDa KDa

CD2AP Antibody - Additional Information**Gene ID** 23607**Other Names**

CD2-associated protein, Adapter protein CMS, Cas ligand with multiple SH3 domains, CD2AP

Reconstitution & Storage

Store at -20°C for up to one year.

Precautions

CD2AP Antibody is for research use only and not for use in diagnostic or therapeutic procedures.

CD2AP Antibody - Protein Information**Name** CD2AP**Function**

Seems to act as an adapter protein between membrane proteins and the actin cytoskeleton (PubMed:10339567). In collaboration with CBLC, modulates the rate of RET turnover and may act as regulatory checkpoint that limits the potency of GDNF on neuronal survival. Controls CBLC function, converting it from an inhibitor to a promoter of RET degradation (By similarity). May play a role in receptor clustering and cytoskeletal polarity in the junction between T-cell and antigen-presenting cell (By similarity). May anchor the podocyte slit diaphragm to the actin cytoskeleton in renal glomerulus. Also required for cytokinesis (PubMed:15800069). Plays a role in epithelial cell junctions formation (PubMed:22891260).

Cellular Location

Cytoplasm, cytoskeleton. Cell projection, ruffle. Cell junction. Note=Colocalizes with F-actin and BCAR1/p130Cas in membrane ruffles (PubMed:10339567). Located at podocyte slit diaphragm between podocyte foot processes (By similarity). During late anaphase and telophase, concentrates in the vicinity of the midzone microtubules and in the midbody in late telophase

(PubMed:15800069). {ECO:0000250|UniProtKB:Q9JLQ0, ECO:0000269|PubMed:10339567, ECO:0000269|PubMed:15800069}

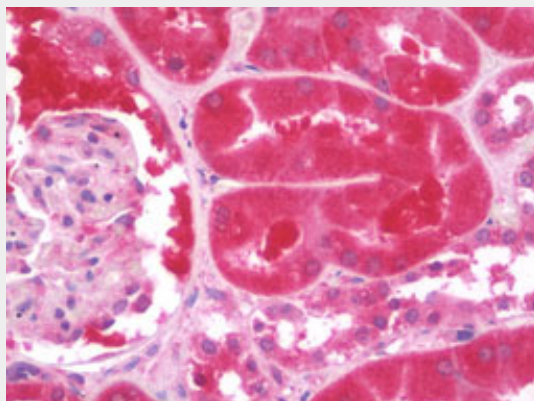
Tissue Location

Widely expressed in fetal and adult tissues.

CD2AP Antibody - Protocols

Provided below are standard protocols that you may find useful for product applications.

- [Western Blot](#)
- [Blocking Peptides](#)
- [Dot Blot](#)
- [Immunohistochemistry](#)
- [Immunofluorescence](#)
- [Immunoprecipitation](#)
- [Flow Cytometry](#)
- [Cell Culture](#)

CD2AP Antibody - Images

Anti-CD2AP antibody IHC staining of human kidney.

CD2AP Antibody - Background

Seems to act as an adapter protein between membrane proteins and the actin cytoskeleton. In collaboration with CBLC, modulates the rate of RET turnover and may act as regulatory checkpoint that limits the potency of GDNF on neuronal survival. Controls CBLC function, converting it from an inhibitor to a promoter of RET degradation. May play a role in receptor clustering and cytoskeletal polarity in the junction between T- cell and antigen-presenting cell. May anchor the podocyte slit diaphragm to the actin cytoskeleton in renal glomerulus. Also required for cytokinesis.

CD2AP Antibody - References

Kirsch K.H.,et al.Proc. Natl. Acad. Sci. U.S.A. 96:6211-6216(1999).
Ora A.,et al.Submitted (JUN-1999) to the EMBL/GenBank/DDBJ databases.
Mungall A.J.,et al.Nature 425:805-811(2003).
Mural R.J.,et al.Submitted (JUL-2005) to the EMBL/GenBank/DDBJ databases.
Bechtel S.,et al.BMC Genomics 8:399-399(2007).