

PIBF1 / PIBF Antibody (C-Terminus)
Rabbit Polyclonal Antibody
Catalog # ALS16011**Specification**

PIBF1 / PIBF Antibody (C-Terminus) - Product Information

Application	WB, IF
Primary Accession	Q8WXW3
Reactivity	Human, Mouse, Rat
Host	Rabbit
Clonality	Polyclonal
Calculated MW	90kDa KDa

PIBF1 / PIBF Antibody (C-Terminus) - Additional Information**Gene ID** 10464**Other Names**

Progesterone-induced-blocking factor 1, PIBF1, C13orf24, PIBF

Target/Specificity

Multiple isoforms of PIBF1 exists as a result of alternative splicing event.

Reconstitution & Storage

Long term: -20°C; Short term: +4°C. Avoid repeat freeze-thaw cycles.

Precautions

PIBF1 / PIBF Antibody (C-Terminus) is for research use only and not for use in diagnostic or therapeutic procedures.

PIBF1 / PIBF Antibody (C-Terminus) - Protein Information**Name** PIBF1**Synonyms** C13orf24, PIBF**Function**

Plays a role in ciliogenesis.

Cellular Location

Cytoplasm, cytoskeleton, microtubule organizing center, centrosome. Cytoplasm. Secreted

Note=In progesterone-treated astrocytoma cells a 57 kDa protein and isoform 1 (90 kDa) have been described, both being located in the intracellular medium and secreted. Respective predominant forms are isoform 1 in the intracellular and the 57 kDa protein in the extracellular medium (PubMed:25218441). [Isoform 4]: Secreted Note=Secreted by progesterone-treated lymphocytes (PubMed:14634107)

Tissue Location

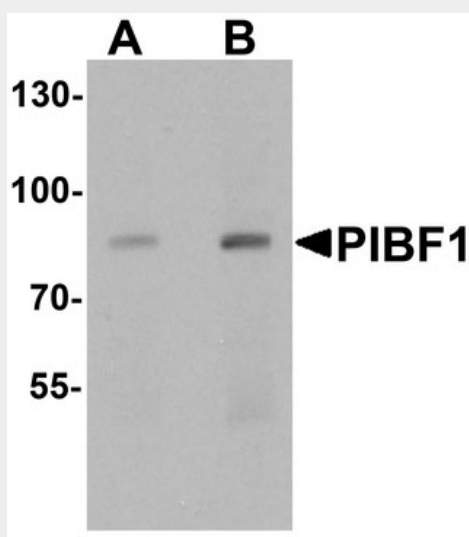
Expressed at highest levels in testis. Moderate expression is detected in spleen, thymus, prostate, ovary, small intestine, and colon (PubMed:11935316). Expressed in the first trimester pregnancy decidua (PubMed:12516630). Localized to extravillous cytotrophoblast (at protein level). Also found in syncytiotrophoblast and part of the villous cytotrophoblast. Isoform 1 is expressed in first trimester and term villous trophoblast; trophoblast cells can additionally express other isoforms (PubMed:18817979). Overexpressed in solid tumors from stomach and uterus and in cells from ovary, cervical, breast, lymphoma and leukemia cancer (PubMed:25218441).

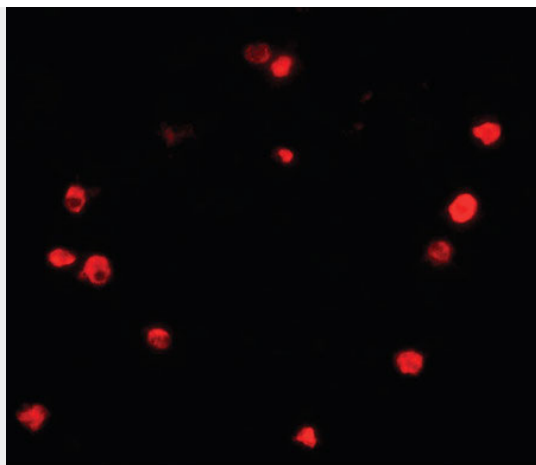
PIBF1 / PIBF Antibody (C-Terminus) - Protocols

Provided below are standard protocols that you may find useful for product applications.

- [Western Blot](#)
- [Blocking Peptides](#)
- [Dot Blot](#)
- [Immunohistochemistry](#)
- [Immunofluorescence](#)
- [Immunoprecipitation](#)
- [Flow Cytometry](#)
- [Cell Culture](#)

PIBF1 / PIBF Antibody (C-Terminus) - Images





Immunofluorescence of PBIF in human spleen tissue with PBIF antibody at 20 ug/ml.

PIBF1 / PIBF Antibody (C-Terminus) - Background

Mediator of progesterone that by acting on the phospholipase A2 enzyme interferes with arachidonic acid metabolism, induces a Th2 biased immune response, and by controlling NK activity exerts an anti-abortion effect.

PIBF1 / PIBF Antibody (C-Terminus) - References

Rozenblum E., et al. Hum. Genet. 110:111-121(2002).
Lachmann M., et al. Int. J. Cancer 112:51-60(2004).
Szekeres-Bartho J., et al. Submitted (NOV-1997) to the EMBL/GenBank/DDBJ databases.
Dunham A., et al. Nature 428:522-528(2004).
Szekeres-Bartho J., et al. Int. Immunopharmacol. 1:1037-1048(2001).