

**TFPI / LACI Antibody (N-Terminus)**  
**Rabbit Polyclonal Antibody**  
**Catalog # ALS16030****Specification**

---

**TFPI / LACI Antibody (N-Terminus) - Product Information**

Application	WB, IF
Primary Accession	<a href="#">P10646</a>
Reactivity	Human, Mouse, Rat
Host	Rabbit
Clonality	Polyclonal
Calculated MW	35kDa KDa

**TFPI / LACI Antibody (N-Terminus) - Additional Information****Gene ID** 7035**Other Names**

Tissue factor pathway inhibitor, TFPI, Extrinsic pathway inhibitor, EPI, Lipoprotein-associated coagulation inhibitor, LACI, TFPI, LACI, TFPI1

**Target/Specificity**

TFPI antibody is human, mouse and rat reactive. At least two isoforms of TFPI are known to exist; this antibody will detect both isoforms.

**Reconstitution & Storage**

Long term: -20°C; Short term: +4°C. Avoid repeat freeze-thaw cycles.

**Precautions**

TFPI / LACI Antibody (N-Terminus) is for research use only and not for use in diagnostic or therapeutic procedures.

**TFPI / LACI Antibody (N-Terminus) - Protein Information****Name** TFPI**Synonyms** LACI, TFPI1**Function**

Inhibits factor X (X(a)) directly and, in a Xa-dependent way, inhibits VIIa/tissue factor activity, presumably by forming a quaternary Xa/LACI/VIIa/TF complex. It possesses an antithrombotic action and also the ability to associate with lipoproteins in plasma.

**Cellular Location**

[Isoform Alpha]: Secreted.

**Tissue Location**

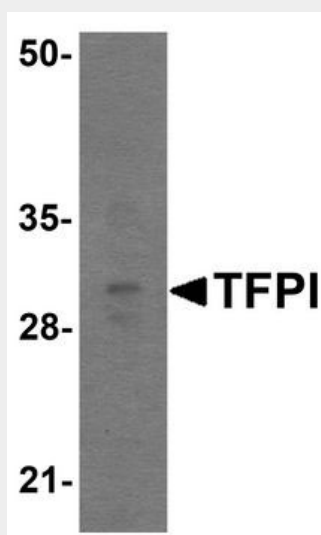
Mostly in endothelial cells.

### TFPI / LACI Antibody (N-Terminus) - Protocols

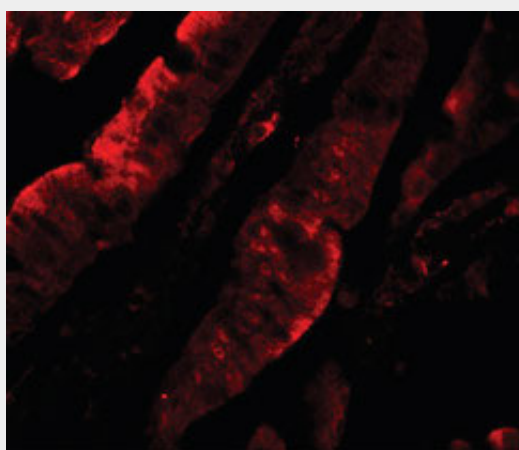
Provided below are standard protocols that you may find useful for product applications.

- [Western Blot](#)
- [Blocking Peptides](#)
- [Dot Blot](#)
- [Immunohistochemistry](#)
- [Immunofluorescence](#)
- [Immunoprecipitation](#)
- [Flow Cytometry](#)
- [Cell Culture](#)

### TFPI / LACI Antibody (N-Terminus) - Images



Western blot analysis of TFPI in rat small intestine tissue lysate with TFPI antibody at 1 ug/ml.



Immunofluorescence of TFPI in rat small intestine tissue with TFPI antibody at 20 ug/ml.

### TFPI / LACI Antibody (N-Terminus) - Background

Inhibits factor X (X(a)) directly and, in a Xa-dependent way, inhibits VIIa/tissue factor activity, presumably by forming a quaternary Xa/LACI/VIIa/TF complex. It possesses an antithrombotic action

and also the ability to associate with lipoproteins in plasma.

**TFPI / LACI Antibody (N-Terminus) - References**

Wun T.-C., et al. J. Biol. Chem. 263:6001-6004(1988).  
Girard T.J., et al. Thromb. Res. 55:37-50(1989).  
van der Logt C.P.E., et al. Biochemistry 30:1571-1577(1991).  
Girard T.J., et al. J. Biol. Chem. 266:5036-5041(1991).  
Chang J.-Y., et al. Submitted (AUG-1997) to the EMBL/GenBank/DDBJ databases.