

**MAPK6 / ERK3 Antibody (C-Terminus)**  
**Goat Polyclonal Antibody**  
**Catalog # ALS16104****Specification**

---

**MAPK6 / ERK3 Antibody (C-Terminus) - Product Information**

Application	WB, IHC
Primary Accession	<a href="#">Q16659</a>
Reactivity	Human, Mouse, Rabbit, Hamster, Pig, Chicken, Horse, Bovine, Dog
Host	Goat
Clonality	Polyclonal
Calculated MW	83kDa KDa

**MAPK6 / ERK3 Antibody (C-Terminus) - Additional Information****Gene ID** 5597**Other Names**

Mitogen-activated protein kinase 6, MAP kinase 6, MAPK 6, 2.7.11.24, Extracellular signal-regulated kinase 3, ERK-3, MAP kinase isoform p97, p97-MAPK, MAPK6, ERK3, PRKM6

**Target/Specificity**

Human MAPK6 / ERK3. Reported variants represent identical protein (NP\_056621.4; NP\_081694.1).

**Reconstitution & Storage**

Store at -20°C. Minimize freezing and thawing.

**Precautions**

MAPK6 / ERK3 Antibody (C-Terminus) is for research use only and not for use in diagnostic or therapeutic procedures.

**MAPK6 / ERK3 Antibody (C-Terminus) - Protein Information****Name** MAPK6**Synonyms** ERK3, PRKM6**Function**

Atypical MAPK protein. Phosphorylates microtubule-associated protein 2 (MAP2) and MAPKAPK5. The precise role of the complex formed with MAPKAPK5 is still unclear, but the complex follows a complex set of phosphorylation events: upon interaction with atypical MAPKAPK5, ERK3/MAPK6 is phosphorylated at Ser-189 and then mediates phosphorylation and activation of MAPKAPK5, which in turn phosphorylates ERK3/MAPK6. May promote entry in the cell cycle (By similarity).

**Cellular Location**

Cytoplasm. Nucleus. Note=Translocates to the cytoplasm following interaction with MAPKAPK5

### Tissue Location

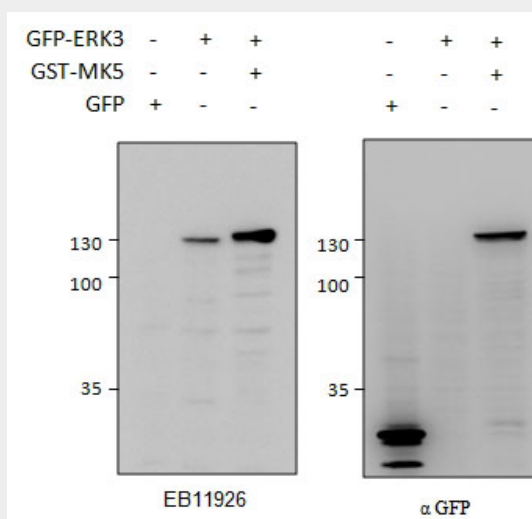
Highest expression in the skeletal muscle, followed by the brain. Also found in heart, placenta, lung, liver, pancreas, kidney and skin fibroblasts

### MAPK6 / ERK3 Antibody (C-Terminus) - Protocols

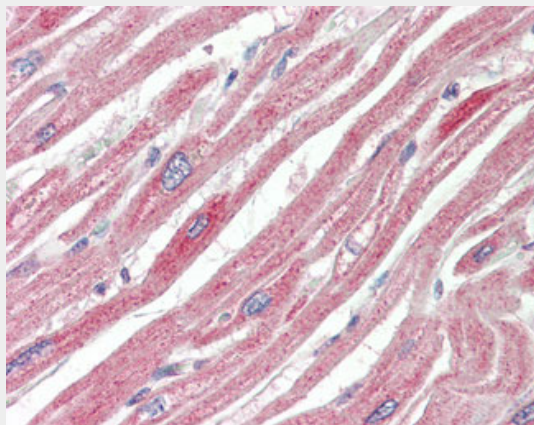
Provided below are standard protocols that you may find useful for product applications.

- [Western Blot](#)
- [Blocking Peptides](#)
- [Dot Blot](#)
- [Immunohistochemistry](#)
- [Immunofluorescence](#)
- [Immunoprecipitation](#)
- [Flow Cytometry](#)
- [Cell Culture](#)

### MAPK6 / ERK3 Antibody (C-Terminus) - Images



MAPK6 antibody HEK293 lysate (10 ug protein in RIPA buffer) overexpressing GFP-fused Mouse ERK3...



Anti-MAPK6 / ERK3 antibody IHC staining of human heart.

**MAPK6 / ERK3 Antibody (C-Terminus) - Background**

Atypical MAPK protein. Phosphorylates microtubule-associated protein 2 (MAP2) and MAPKAPK5. The precise role of the complex formed with MAPKAPK5 is still unclear, but the complex follows a complex set of phosphorylation events: upon interaction with atypical MAPKAPK5, ERK3/MAPK6 is phosphorylated at Ser-189 and then mediates phosphorylation and activation of MAPKAPK5, which in turn phosphorylates ERK3/MAPK6. May promote entry in the cell cycle (By similarity).

**MAPK6 / ERK3 Antibody (C-Terminus) - References**

Zhu A.X., et al. Mol. Cell. Biol. 14:8202-8211(1994).  
Meloche S., et al. Oncogene 13:1575-1579(1996).  
Saranath D., et al. Submitted (SEP-2001) to the EMBL/GenBank/DDBJ databases.  
Ota T., et al. Nat. Genet. 36:40-45(2004).  
Bechtel S., et al. BMC Genomics 8:399-399(2007).