

POSTN / Periostin Antibody
Rabbit Polyclonal Antibody
Catalog # ALS16118**Specification**

POSTN / Periostin Antibody - Product Information

| | |
|-------------------|----------------------------|
| Application | IHC |
| Primary Accession | Q15063 |
| Reactivity | Human, Mouse, Rat, Chicken |
| Host | Rabbit |
| Clonality | Polyclonal |
| Calculated MW | 93kDa KDa |

POSTN / Periostin Antibody - Additional Information**Gene ID** 10631**Other Names**

Periostin, PN, Osteoblast-specific factor 2, OSF-2, POSTN, OSF2

Target/Specificity

Based on the homology of the immunogen with other species, we expect that this antibody will recognize periostin in most, if not all, species of mammals, birds, amphibians, and fishes. Specific for three periostin bands around ~93 kDa in mouse lung e ...

Reconstitution & Storage

Store at -20°C. Aliquot to avoid freeze/thaw cycles. Store undiluted.

Precautions

POSTN / Periostin Antibody is for research use only and not for use in diagnostic or therapeutic procedures.

POSTN / Periostin Antibody - Protein Information**Name** POSTN**Synonyms** OSF2**Function**

Induces cell attachment and spreading and plays a role in cell adhesion (PubMed:12235007). Enhances incorporation of BMP1 in the fibronectin matrix of connective tissues, and subsequent proteolytic activation of lysyl oxidase LOX (By similarity).

Cellular Location

Golgi apparatus {ECO:0000250|UniProtKB:Q62009}. Secreted Secreted, extracellular space, extracellular matrix Note=Colocalizes with BMP1 in the Golgi {ECO:0000250|UniProtKB:Q62009}

Tissue Location

Widely expressed with highest levels in aorta, stomach, lower gastrointestinal tract, placenta, uterus, thyroid tissue and breast. Expressed in the kidney (PubMed:21763681). Expressed in the lung (PubMed:22079858). Up-regulated in epithelial ovarian tumors. Not expressed in normal ovaries. Also highly expressed at the tumor periphery of lung carcinoma tissue but not within the tumor. Overexpressed in breast cancers.

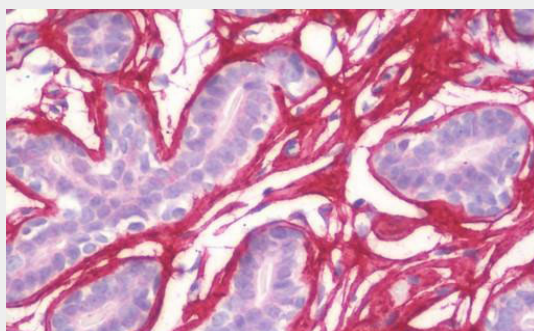
Volume

50 µl

POSTN / Periostin Antibody - Protocols

Provided below are standard protocols that you may find useful for product applications.

- [Western Blot](#)
- [Blocking Peptides](#)
- [Dot Blot](#)
- [Immunohistochemistry](#)
- [Immunofluorescence](#)
- [Immunoprecipitation](#)
- [Flow Cytometry](#)
- [Cell Culture](#)

POSTN / Periostin Antibody - Images

Human Breast: Formalin-Fixed, Paraffin-Embedded (FFPE)

POSTN / Periostin Antibody - Background

Enhances incorporation of BMP1 in the fibronectin matrix of connective tissues, and subsequent proteolytic activation of lysyl oxidase LOX (By similarity). Induces cell attachment and spreading and plays a role in cell adhesion. May play a role in extracellular matrix mineralization.

POSTN / Periostin Antibody - References

Takeshita S., et al. Biochem. J. 294:271-278(1993).
Gillan L., et al. Cancer Res. 62:5358-5364(2002).
Bai Y., et al. Jpn. Clin. Med. 1:13-20(2010).
Yamada S., et al. Submitted (FEB-2005) to the EMBL/GenBank/DDBJ databases.
Dunham A., et al. Nature 428:522-528(2004).