

TSG / TWSG1 Antibody (clone 2F3)
Mouse Monoclonal Antibody
Catalog # ALS16120**Specification**

TSG / TWSG1 Antibody (clone 2F3) - Product Information

Application	IHC, WB
Primary Accession	O9GZX9
Reactivity	Human
Host	Mouse
Clonality	Monoclonal
Calculated MW	25kDa KDa

TSG / TWSG1 Antibody (clone 2F3) - Additional Information**Gene ID** 57045**Other Names**

Twisted gastrulation protein homolog 1, TWSG1, TSG

Target/Specificity

Human TWSG1

Reconstitution & Storage

Store at -20°C or lower. Aliquot to avoid repeated freezing and thawing.

Precautions

TSG / TWSG1 Antibody (clone 2F3) is for research use only and not for use in diagnostic or therapeutic procedures.

TSG / TWSG1 Antibody (clone 2F3) - Protein Information**Name** TWSG1**Synonyms** TSG**Function**

May be involved in dorsoventral axis formation. Seems to antagonize BMP signaling by forming ternary complexes with CHRD and BMPs, thereby preventing BMPs from binding to their receptors. In addition to the anti-BMP function, also has pro-BMP activity, partly mediated by cleavage and degradation of CHRD, which releases BMPs from ternary complexes. May be an important modulator of BMP-regulated cartilage development and chondrocyte differentiation. May play a role in thymocyte development (By similarity).

Cellular Location

Secreted.

Volume

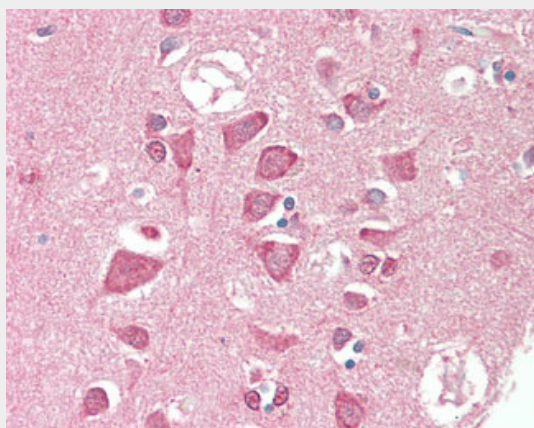
50 µl

TSG / TWSG1 Antibody (clone 2F3) - Protocols

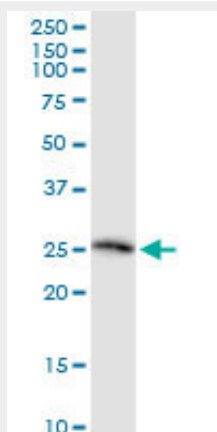
Provided below are standard protocols that you may find useful for product applications.

- [Western Blot](#)
- [Blocking Peptides](#)
- [Dot Blot](#)
- [Immunohistochemistry](#)
- [Immunofluorescence](#)
- [Immunoprecipitation](#)
- [Flow Cytometry](#)
- [Cell Culture](#)

TSG / TWSG1 Antibody (clone 2F3) - Images



Anti-TSG / TWSG1 antibody IHC staining of human brain, cortex.



TWSG1 monoclonal antibody (M07), clone 2F3. Western blot of TWSG1 expression in human kidney.

TSG / TWSG1 Antibody (clone 2F3) - Background

May be involved in dorsoventral axis formation. Seems to antagonize BMP signaling by forming ternary complexes with CHRD and BMPs, thereby preventing BMPs from binding to their receptors. In addition to the anti-BMP function, also has pro-BMP activity, partly mediated by cleavage and

degradation of CHRD, which releases BMPs from ternary complexes. May be an important modulator of BMP-regulated cartilage development and chondrocyte differentiation. May play a role in thymocyte development (By similarity).

TSG / TWSG1 Antibody (clone 2F3) - References

Scott I.C.,et al.Nature 410:475-478(2001).

Scott I.C.,et al.Nature 411:720-720(2001).

Graf D.,et al.Mamm. Genome 12:554-560(2001).

Li J.M.,et al.Submitted (AUG-2000) to the EMBL/GenBank/DDBJ databases.

Ota T.,et al.Nat. Genet. 36:40-45(2004).