

Complement C1s Antibody (clone 2A8)
Mouse Monoclonal Antibody
Catalog # ALS16142**Specification**

Complement C1s Antibody (clone 2A8) - Product Information

Application	WB, IHC
Primary Accession	P09871
Reactivity	Human, Mouse, Rat, Monkey
Host	Mouse
Clonality	Monoclonal
Calculated MW	77kDa KDa

Complement C1s Antibody (clone 2A8) - Additional Information**Gene ID** 716**Other Names**

Complement C1s subcomponent, 3.4.21.42, C1 esterase, Complement component 1 subcomponent s, Complement C1s subcomponent heavy chain, Complement C1s subcomponent light chain, C1S

Target/Specificity

Human ComplementC1S

Reconstitution & Storage

Store at -20°C. Minimize freezing and thawing.

Precautions

Complement C1s Antibody (clone 2A8) is for research use only and not for use in diagnostic or therapeutic procedures.

Complement C1s Antibody (clone 2A8) - Protein Information**Name** C1S**Function**

C1s B chain is a serine protease that combines with C1q and C1r to form C1, the first component of the classical pathway of the complement system. C1r activates C1s so that it can, in turn, activate C2 and C4.

Volume

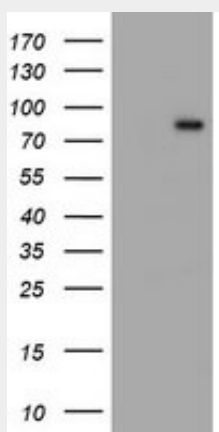
50 µl

Complement C1s Antibody (clone 2A8) - Protocols

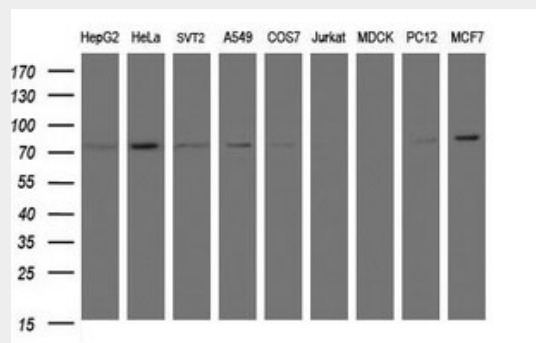
Provided below are standard protocols that you may find useful for product applications.

- [Western Blot](#)
- [Blocking Peptides](#)
- [Dot Blot](#)
- [Immunohistochemistry](#)
- [Immunofluorescence](#)
- [Immunoprecipitation](#)
- [Flow Cytometry](#)
- [Cell Culture](#)

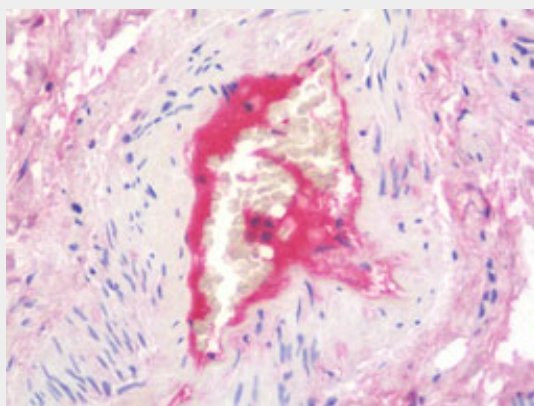
Complement C1s Antibody (clone 2A8) - Images



HEK293T cells were transfected with the pCMV6-ENTRY control (Left lane) or pCMV6-ENTRY C1S...



Western blot of extracts (35 ug) from 9 different cell lines by using anti-C1S monoclonal...



Anti-Complement C1s antibody IHC staining of human small intestine.

Complement C1s Antibody (clone 2A8) - Background

C1s B chain is a serine protease that combines with C1q and C1r to form C1, the first component of the classical pathway of the complement system. C1r activates C1s so that it can, in turn, activate C2 and C4.

Complement C1s Antibody (clone 2A8) - References

McKinnon C.M.,et al.Eur. J. Biochem. 169:547-553(1987).
Tosi M.,et al.Biochemistry 26:8516-8524(1987).
Kusumoto H.,et al.Proc. Natl. Acad. Sci. U.S.A. 85:7307-7311(1988).
Mural R.J.,et al.Submitted (SEP-2005) to the EMBL/GenBank/DDBJ databases.
Endo Y.,et al.J. Immunol. 161:4924-4930(1998).