

Proliferation Marker IPO-38 Antibody (clone IPO-38)
Mouse Monoclonal Antibody
Catalog # ALS16154**Specification**

Proliferation Marker IPO-38 Antibody (clone IPO-38) - Product Information

Application	IHC
Reactivity	Human
Host	Mouse
Clonality	Monoclonal

Proliferation Marker IPO-38 Antibody (clone IPO-38) - Additional Information**Target/Specificity**

A 14 -16 kD protein as demonstrated by western blot analysis on the Raji cell line. This antigen was detected after 12 h of PHA-induced activation in the early G1 phase but absent in non-stimulated lymphocytes. Cross reactivity is likely to occur wit ...

Reconstitution & Storage

Long term: -20°C; Short term: -20°C

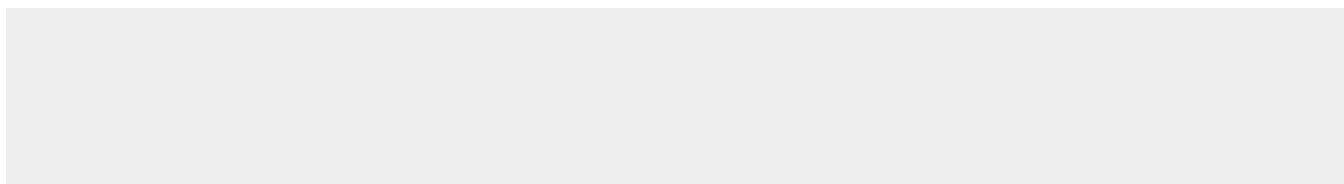
Precautions

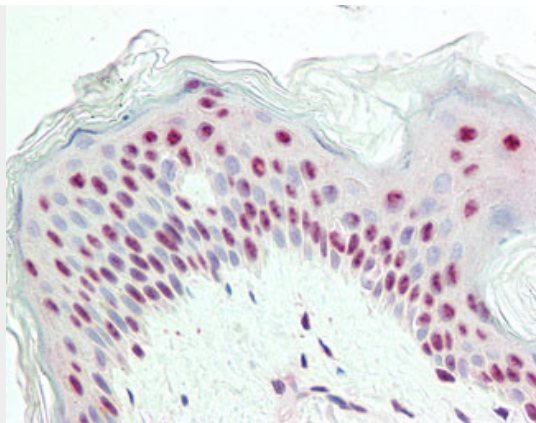
Proliferation Marker IPO-38 Antibody (clone IPO-38) is for research use only and not for use in diagnostic or therapeutic procedures.

Proliferation Marker IPO-38 Antibody (clone IPO-38) - Protein Information**Proliferation Marker IPO-38 Antibody (clone IPO-38) - Protocols**

Provided below are standard protocols that you may find useful for product applications.

- [Western Blot](#)
- [Blocking Peptides](#)
- [Dot Blot](#)
- [Immunohistochemistry](#)
- [Immunofluorescence](#)
- [Immunoprecipitation](#)
- [Flow Cytometry](#)
- [Cell Culture](#)

Proliferation Marker IPO-38 Antibody (clone IPO-38) - Images



Anti-Proliferation Marker IPO-38 antibody IHC staining of human skin.