

Laminin Antibody
Rabbit Polyclonal Antibody
Catalog # ALS16162**Specification**

Laminin Antibody - Product Information

Application	IHC
Reactivity	Human
Host	Rabbit
Clonality	Polyclonal

Laminin Antibody - Additional Information**Target/Specificity**

Typically less than 1% cross reactivity against other extracellular matrix proteins was detected by ELISA against purified standards. Anti-Laminin (Human) (RABBIT) Antibody reacts with most mammalian Laminins and has negligible cross-reactivity with ...

Reconstitution & Storage

Store at 4°C.

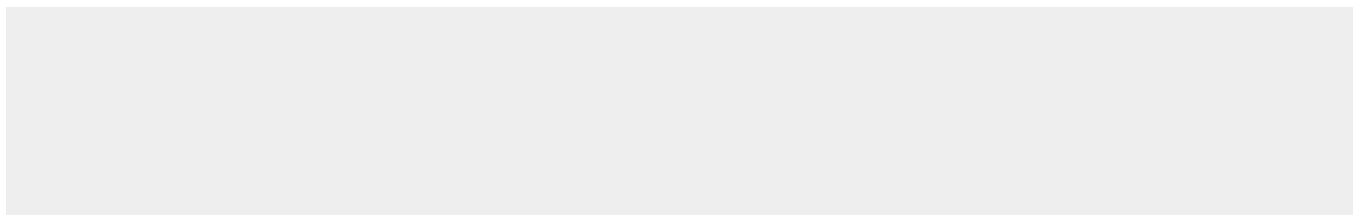
Precautions

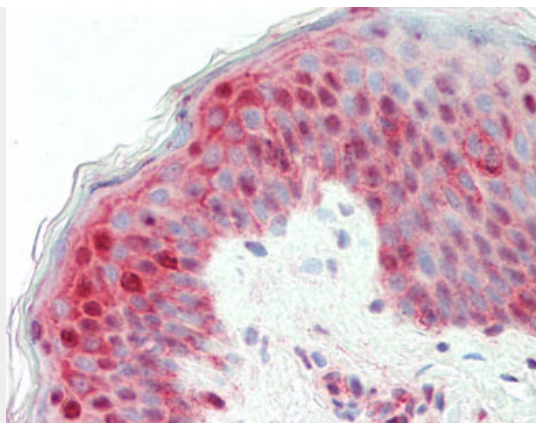
Laminin Antibody is for research use only and not for use in diagnostic or therapeutic procedures.

Laminin Antibody - Protein Information**Laminin Antibody - Protocols**

Provided below are standard protocols that you may find useful for product applications.

- [Western Blot](#)
- [Blocking Peptides](#)
- [Dot Blot](#)
- [Immunohistochemistry](#)
- [Immunofluorescence](#)
- [Immunoprecipitation](#)
- [Flow Cytometry](#)
- [Cell Culture](#)

Laminin Antibody - Images



Anti-Laminin antibody IHC staining of human skin.