

**DVL1 / DVL / Dishevelled Antibody (aa20-32)**  
**Goat Polyclonal Antibody**  
**Catalog # ALS16309****Specification**

---

**DVL1 / DVL / Dishevelled Antibody (aa20-32) - Product Information**

Application	IHC
Primary Accession	<a href="#">O14640</a>
Reactivity	Human, Mouse, Rat, Monkey, Pig, Sheep, Bovine, Guinea Pig
Host	Goat
Clonality	Polyclonal
Calculated MW	75kDa KDa

**DVL1 / DVL / Dishevelled Antibody (aa20-32) - Additional Information****Gene ID** 1855**Other Names**

Segment polarity protein dishevelled homolog DVL-1, Dishevelled-1, DSH homolog 1, DVL1

**Target/Specificity**

Human DVL1 / DVL / Dishevelled.

**Reconstitution & Storage**

Store at -20°C. Minimize freezing and thawing.

**Precautions**

DVL1 / DVL / Dishevelled Antibody (aa20-32) is for research use only and not for use in diagnostic or therapeutic procedures.

**DVL1 / DVL / Dishevelled Antibody (aa20-32) - Protein Information****Name** DVL1**Function**

Participates in Wnt signaling by binding to the cytoplasmic C-terminus of frizzled family members and transducing the Wnt signal to down-stream effectors. Plays a role both in canonical and non-canonical Wnt signaling. Plays a role in the signal transduction pathways mediated by multiple Wnt genes. Required for LEF1 activation upon WNT1 and WNT3A signaling. DVL1 and PAK1 form a ternary complex with MUSK which is important for MUSK-dependent regulation of AChR clustering during the formation of the neuromuscular junction (NMJ).

**Cellular Location**

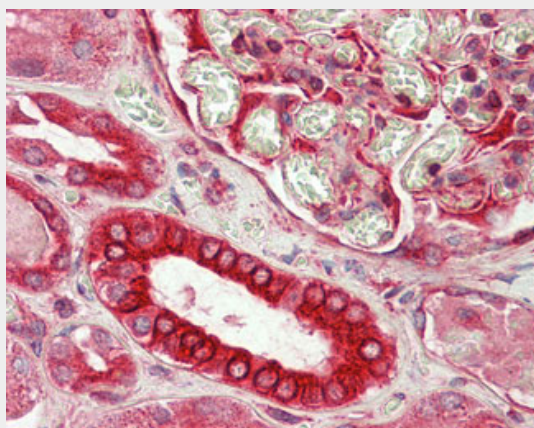
Cell membrane; Peripheral membrane protein; Cytoplasmic side. Cytoplasm, cytosol. Cytoplasmic vesicle Note=Localizes at the cell membrane upon interaction with frizzled family members.

## DVL1 / DVL / Dishevelled Antibody (aa20-32) - Protocols

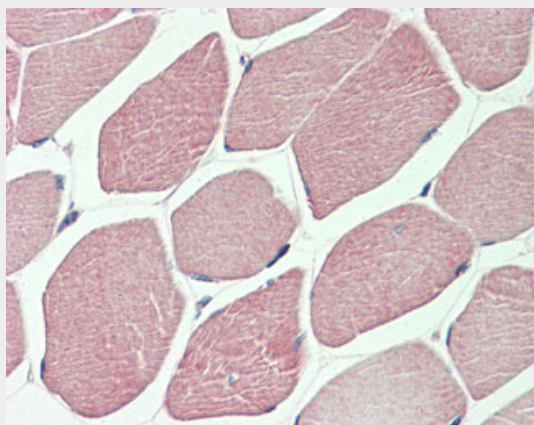
Provided below are standard protocols that you may find useful for product applications.

- [Western Blot](#)
- [Blocking Peptides](#)
- [Dot Blot](#)
- [Immunohistochemistry](#)
- [Immunofluorescence](#)
- [Immunoprecipitation](#)
- [Flow Cytometry](#)
- [Cell Culture](#)

## DVL1 / DVL / Dishevelled Antibody (aa20-32) - Images



Anti-DVL1 / DVL / Dishevelled antibody IHC staining of human kidney.



Anti-DVL1 / DVL / Dishevelled antibody IHC staining of human skeletal muscle.

## DVL1 / DVL / Dishevelled Antibody (aa20-32) - Background

Participates in Wnt signaling by binding to the cytoplasmic C-terminus of frizzled family members and transducing the Wnt signal to down-stream effectors. Plays a role both in canonical and non-canonical Wnt signaling. Plays a role in the signal transduction pathways mediated by multiple Wnt genes. Required for LEF1 activation upon WNT1 and WNT3A signaling. DVL1 and PAK1 form a ternary complex with MUSK which is important for MUSK-dependent regulation of AChR clustering during the formation of the neuromuscular junction (NMJ).

## DVL1 / DVL / Dishevelled Antibody (aa20-32) - References

Semenov M.V.,et al.Genomics 42:302-310(1997).  
Gregory S.G.,et al.Nature 441:315-321(2006).  
Chen W.,et al.Proc. Natl. Acad. Sci. U.S.A. 98:14889-14894(2001).  
Oshita A.,et al.Genes Cells 8:1005-1017(2003).  
Lu W.,et al.Cell 119:97-108(2004).